

**STANDARD ARRIVAL CHART  
INSTRUMENT (STAR) - ICAO**

**SEPANG/KL INTERNATIONAL**

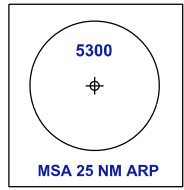
**AIRPORT (WMKK)**

**RNAV (GNSS) RWY 32R, 32L, 33**

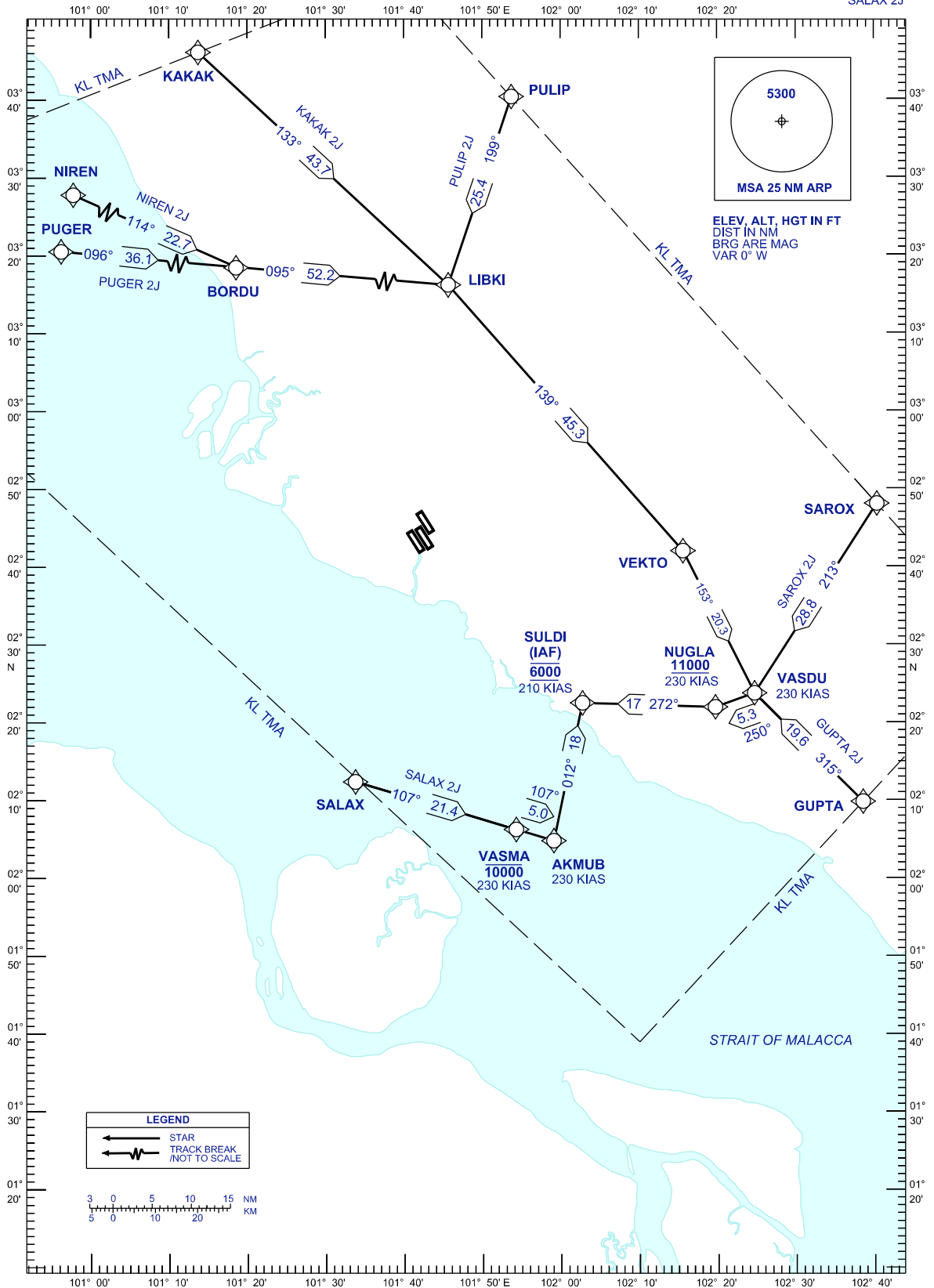
PUGER 2J KAKAK 2J SAROX 2J  
NIREN 2J PULIP 2J GUPTA 2J  
SALAX 2J

APP	121.250	TWR	118,800
	124.200		118,500
	118.650		119,800
	125.850		
	135.750	ATIS	128.050

TRANSITION ALT 11 000 FT



ELEV. ALT. HGT IN FT  
DIST IN NM  
BRG ARE MAG  
VAR 0° W



**LEGEND**

- ← STAR
- ⚡ TRACK BREAK (NOT TO SCALE)

