

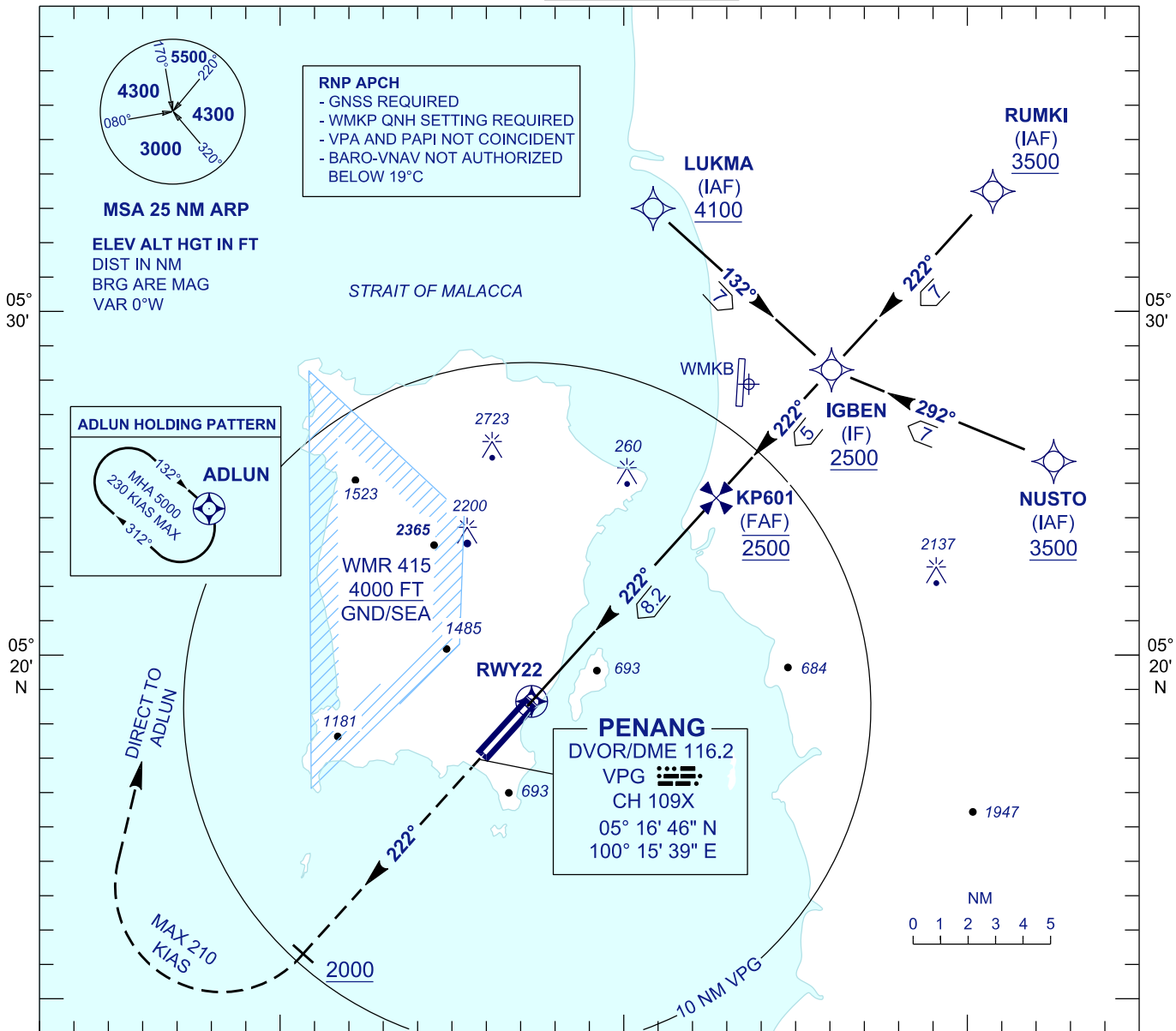
**INSTRUMENT  
APPROACH  
CHART - ICAO**

**AERODROME ELEV 10 FT**  
HEIGHTS RELATED TO  
THR RWY 22 - ELEV 10 FT

APP 125.925  
TWR 121.1  
SMC 121.6, 121.9  
ATIS 126.4

**PENANG/PENANG  
INTERNATIONAL AIRPORT (WMKP)**

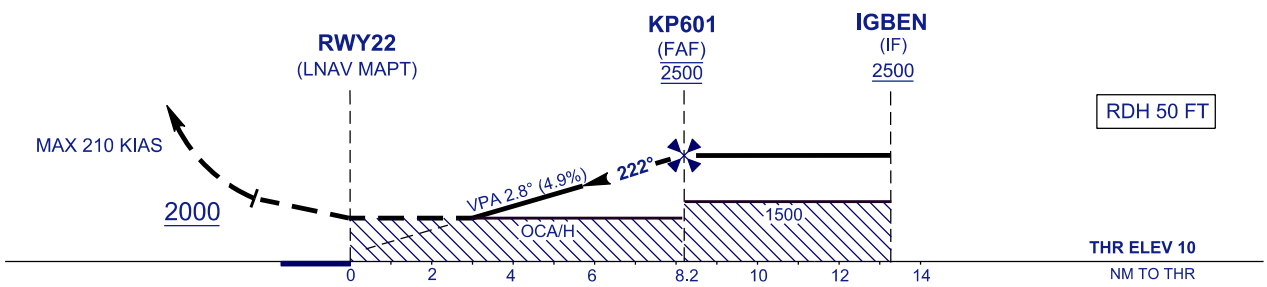
RNP Y RWY 22



**MISSED APPROACH**

CLIMB ON TR 222° TO 5000 FT. ON PASSING 2000 FT TURN RIGHT DIRECT TO ADLUN HOLDING PATTERN OR AS DIRECTED BY ATC

**TRANSITION LEVEL FL 130**  
**TRANSITION ALT 11000**



		OCA/H			
STARIGHT IN APPROACH	ACFT CAT.	A	B	C	D
	LNAV	920 (910)			
	LNAV/VNAV	820 (810)			
CIRCLING		1030 (1020)	1470 (1460)	1560 (1550)	1560 (1550)

GROUND SPEED - KT	70	90	100	120	140	160
RATE OF DESCENT (2.8°) (FT/MIN)	340	446	495	594	693	792

DISTANCE TO THRESHOLD (NM)	8.2	7	6	5	4	3	2
ALTITUDE (FT)	2500	2150	1850	1550	1250	950	660

\* CIRCLING PROHIBITED IN SECTOR 250° - 020° FROM RWY 04