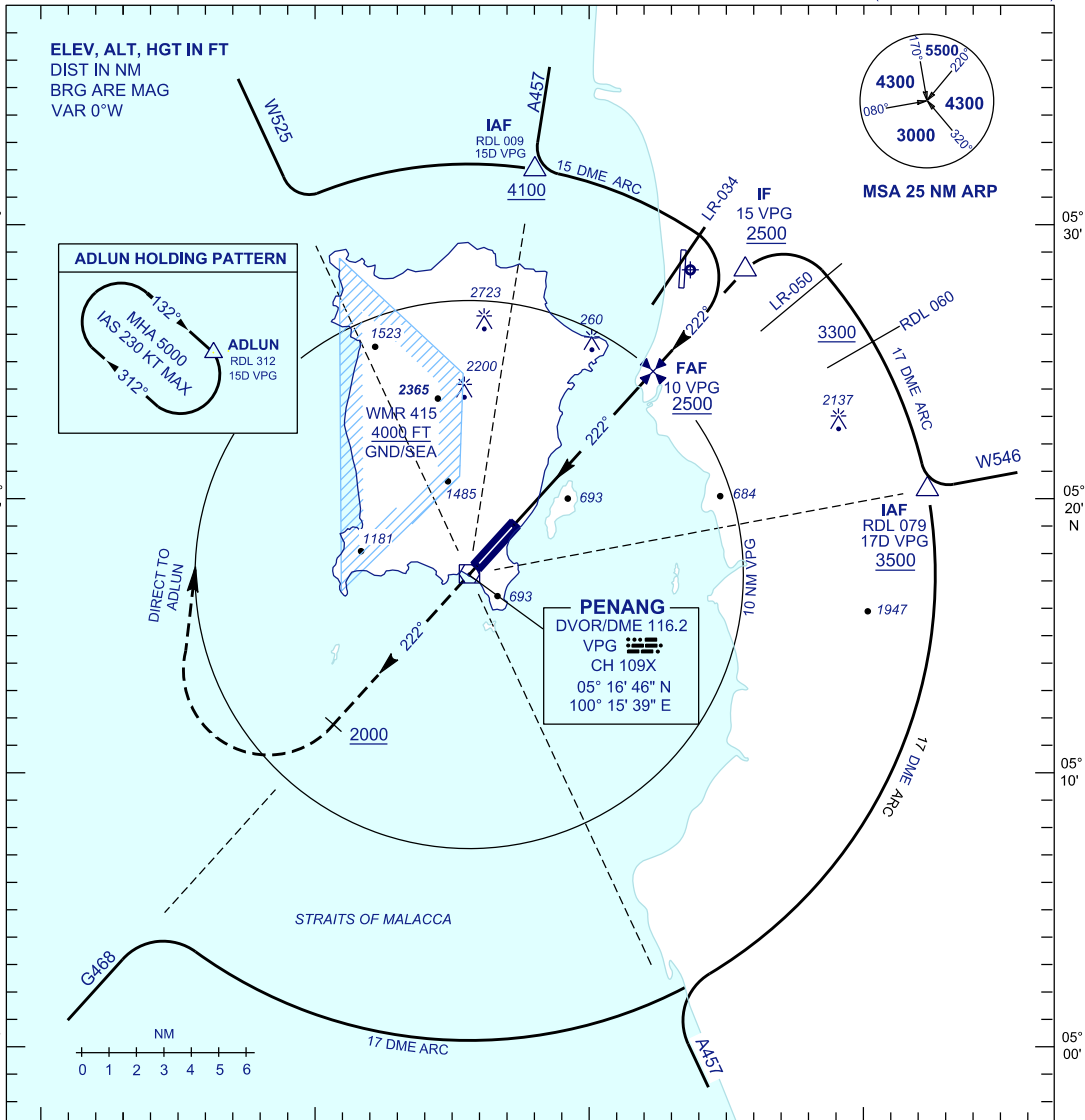


**INSTRUMENT  
APPROACH  
CHART - ICAO**

**AERODROME ELEV 10 FT**  
HEIGHTS RELATED TO  
THR RWY 22 - ELEV 10 FT

APP	125.925
TWR	121.1
SMC	121.6, 121.9
ATIS	126.4

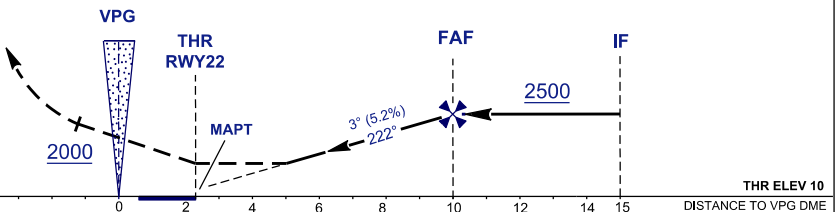
**PENANG/PENANG  
INTERNATIONAL AIRPORT (WMKP)**  
**RWY 22**  
VOR Z  
(15 DME & 17 DME ARC)



**MISSED APPROACH**

CLIMB ON TR 222° TO 5000 FT. ON PASSING  
2000 FT TURN RIGHT DIRECT TO ADLUN  
HOLDING PATTERN OR AS DIRECTED BY ATC

TRANSITION LEVEL FL 130  
TRANSITION ALT 11000



OCA/H				
ACFT CAT.	A	B	C	D
STRAIGHT IN APPROACH	940 (930)			
CIRCLING	1030 (1020)	1470 (1460)	1560 (1550)	1560 (1550)

DME VPG	NM	9.9	8.9	7.9	6.9	5.9	4.9
DIST THR (RWY22)	NM	7.6	6.6	5.6	4.6	3.6	2.6
ALTITUDE	FT	2480	2160	1840	1520	1200	880

\* CIRCLING PROHIBITED IN SECTOR 250° - 020° FROM RWY 22

**CHANGES :** AMEND MISS APPROACH POINT AT THRESHOLD RWY 22 IN PROFILE VIEW &  
REMOVE 5.1 VPG ON OCA/H TABULAR IN PROFILE VIEW.