

**STANDARD DEPARTURE CHART
INSTRUMENT (SID) - ICAO**

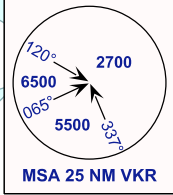
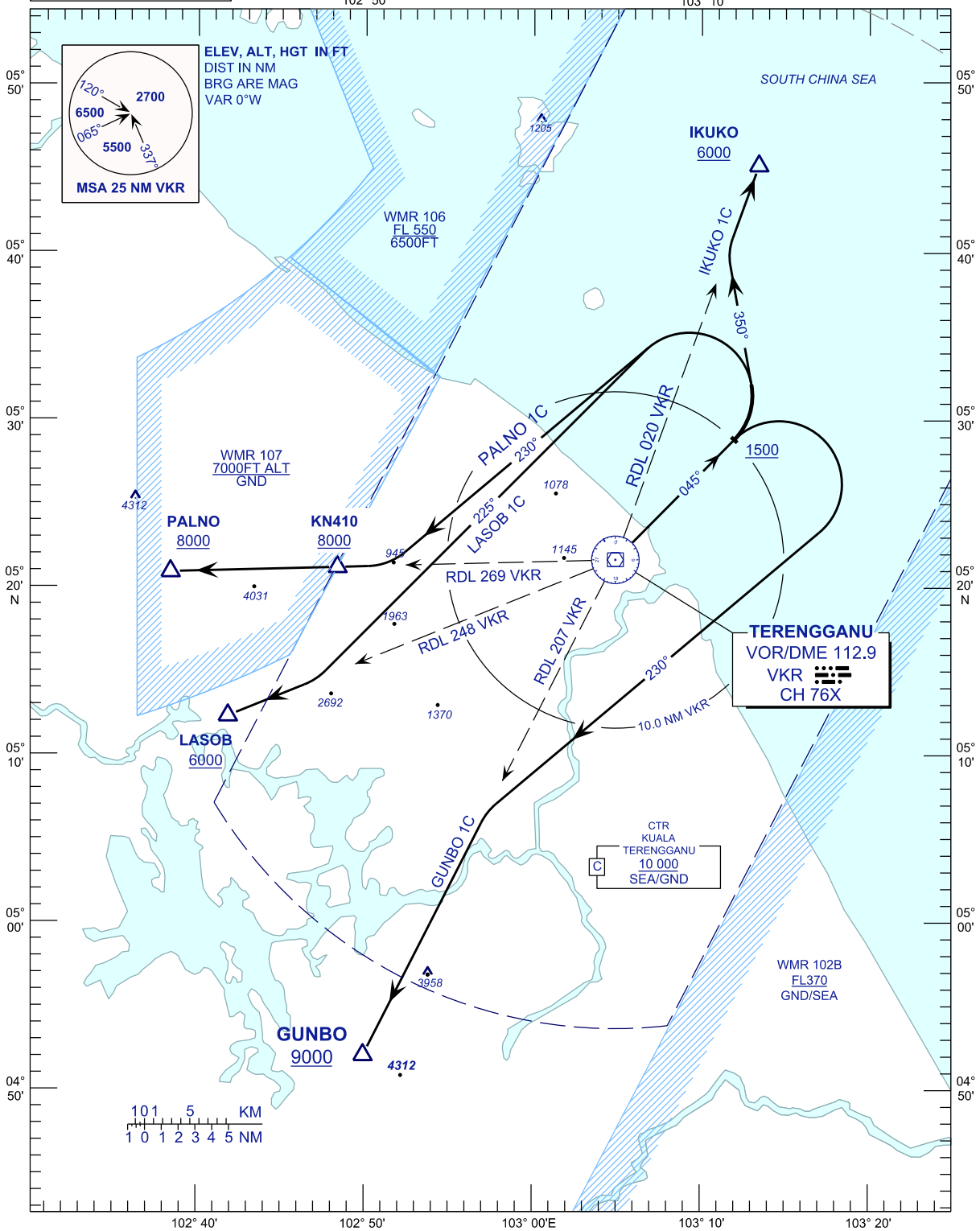
TRANSITION ALTITUDE
11 000 FT

APP	123.6
	235.32
	121.5
TWR	119.05
SMC	121.6
ATIS	126.65

**KUALA TERENGGANU/
SULTAN MAHMUD (WMKN)
RWY 04**

IKUKO 1C
GUNBO 1C
LASOB 1C
PALNO 1C

BANK ANGLE : 25° OR 3°/SEC



ELEV, ALT, HGT IN FT
DIST IN NM
BRG ARE MAG
VAR 0°W

SOUTH CHINA SEA

WMR 106
FL 550
6500 FT

WMR 107
7000 FT ALT
GND

TERENGGANU
VOR/DME 112.9
VCR
CH 76X

CTR
KUALA
TERENGGANU
10 000
SEA/GND

WMR 102B
FL 370
GND/SEA

101 5 KM
1 0 1 2 3 4 5 NM