

**STANDARD ARRIVAL CHART  
INSTRUMENT (STAR) - ICAO**

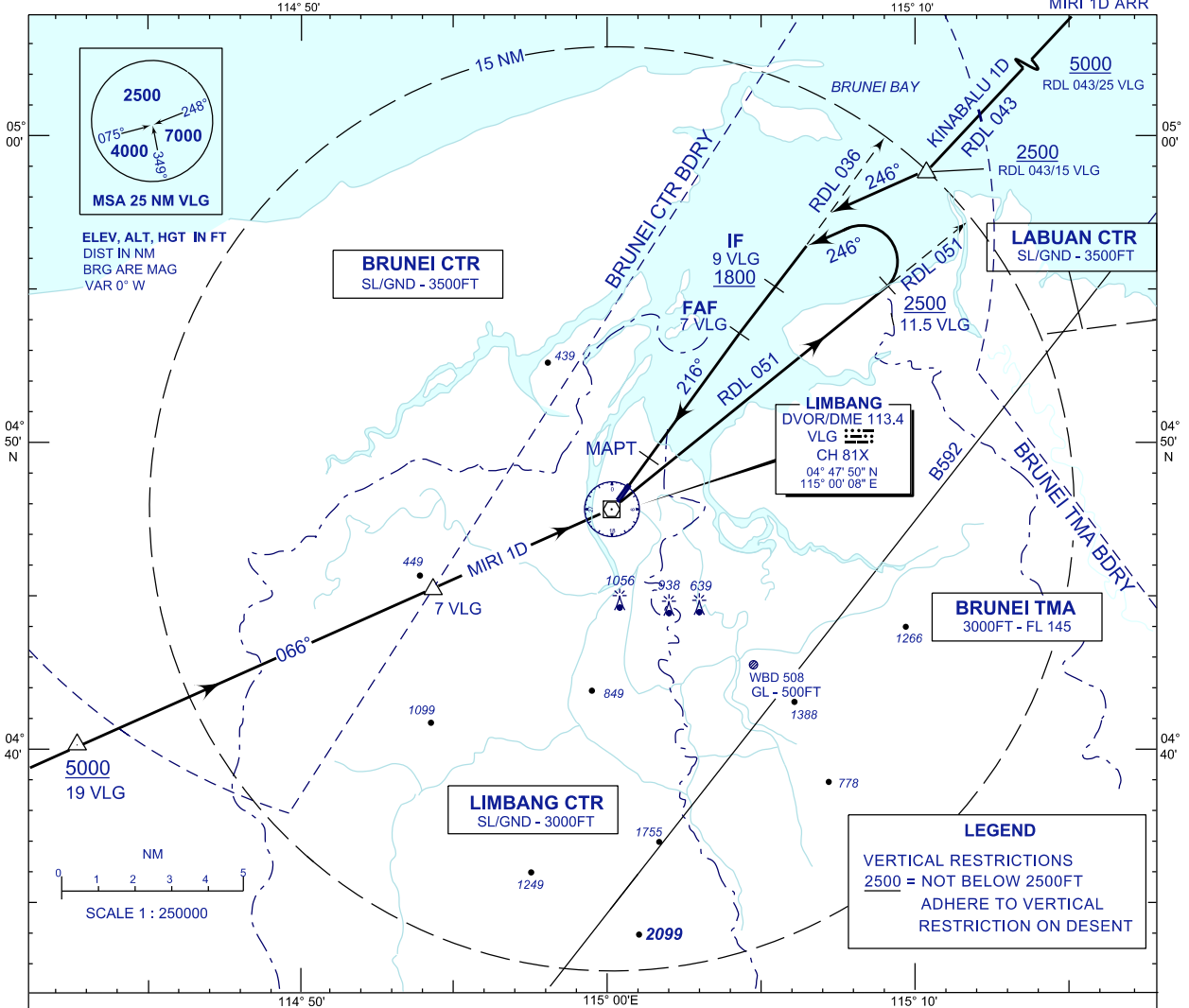
TRANSITION ALTITUDE  
11000 FT

TWR	124.30
SMC	121.95
EMERG	121.50

**LIMBANG/LIMBANG(WBGJ)**

**RWY 22**

VOR/DME  
KINABALU 1D ARR  
MIRI 1D ARR



**RWY 22**

**KINABALU ONE DELTA ARRIVAL**

FROM RDL 043/15 DME VLG VOR INBOUND

- \* TRACK 246°
- \* TO INTERCEPT RDL 036 FOR VOR/DME APPROACH

**MIRI ONE DELTA ARRIVAL**

FROM RDL 246/19 DME VLG VOR INBOUND

- \* TRACK 066° TO VLG VOR, THEN TRACK ON RDL 051
- \* AT 11.5 DME, TURN LEFT TRACK 246°
- \* TO INTERCEPT RDL 036 FOR VOR/DME APPROACH