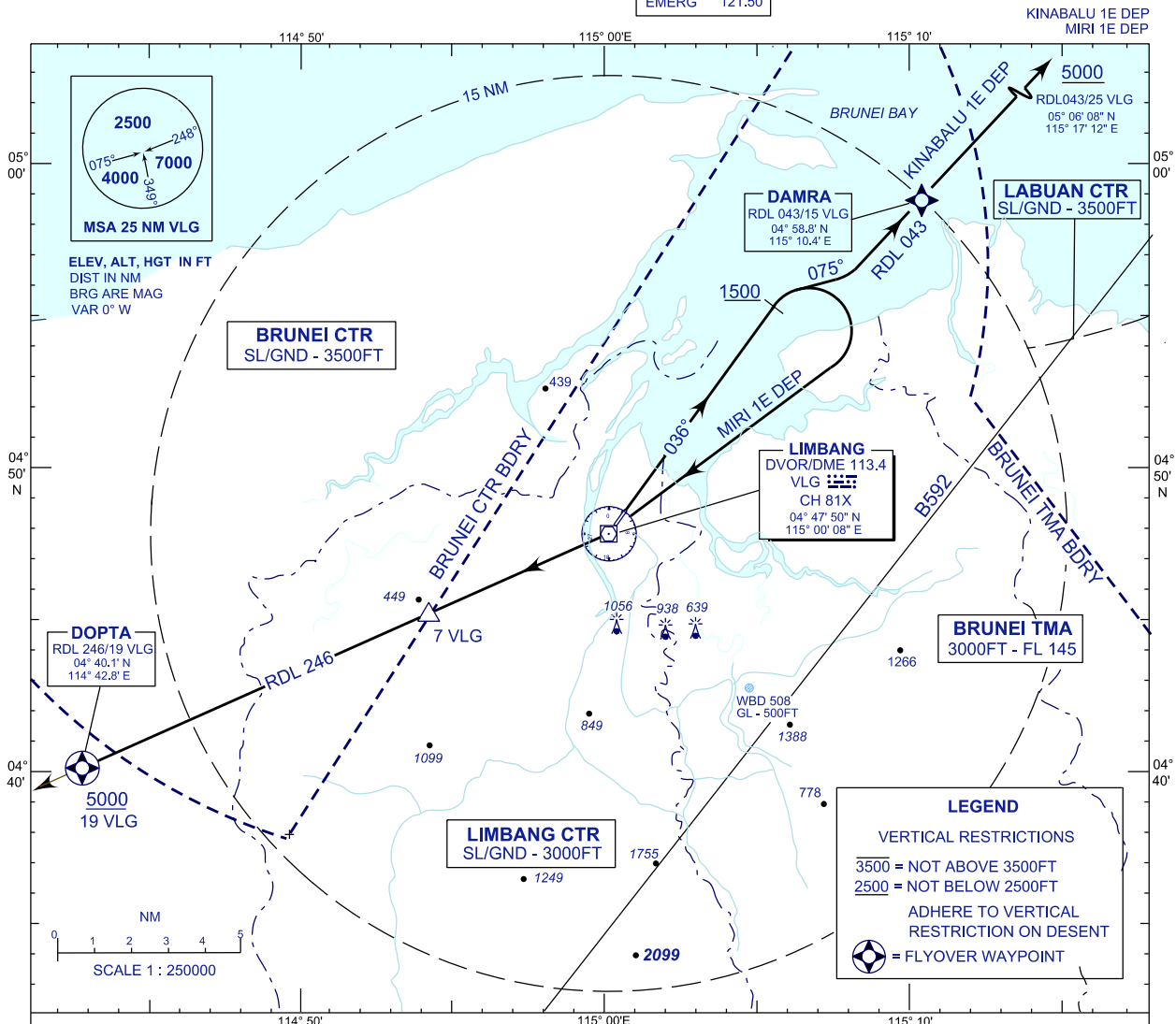


**STANDARD DEPARTURE CHART
INSTRUMENT (SID) - ICAO**

**LIMBANG/LIMBANG(WBGJ)
RWY 04**

TRANSITION ALTITUDE	
11000FT	
TWR	124.30
SMC	121.95
EMERG	121.50



RWY 04

- * CLIMB ON TRACK 036°
- * AT 1500FT OR ABOVE, TURN RIGHT.

FOR KINABALU 1E DEPARTURE

- * TRACK 075° TO INTERCEPT RDL 043 TO DAMRA
RDL 043/15 DME VLG VOR OUTBOUND.

FOR MIRI 1E DEPARTURE

- * TRACK TO VLG VOR, THENCE ON RDL 246 TO DOPTA
RDL 246/19 DME VLG VOR OUTBOUND.

CHANGES : FREQ 118.500 (SRV) PERMANENTLY WITHDRAWN