

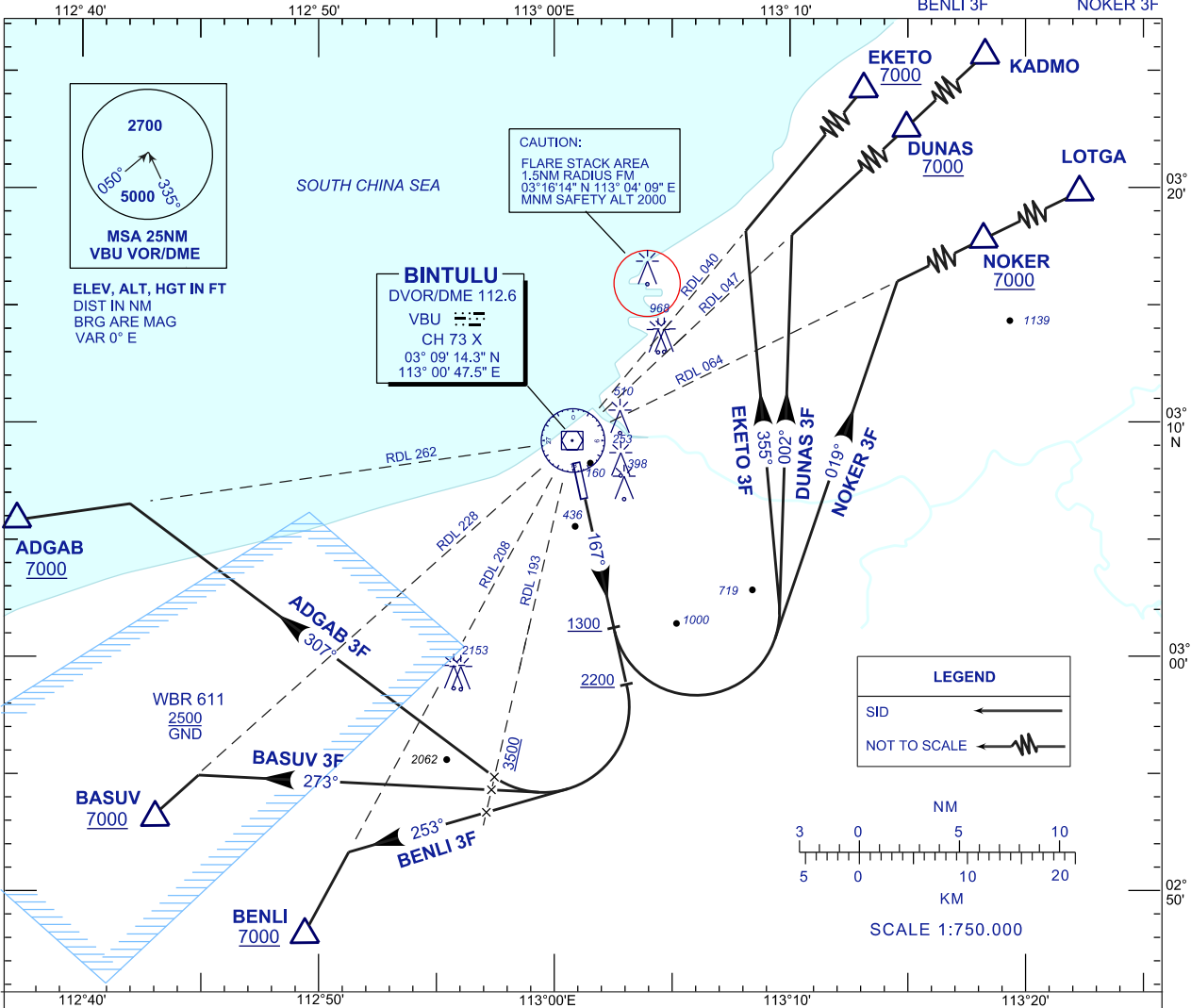
# STANDARD DEPARTURE CHART INSTRUMENT (SID) - ICAO

## BINTULU/BINTULU (WBGB) DEPARTURES RWY 17

TWR/APP 122.3 (P)  
119.25 (S)  
121.5  
SMC 121.8  
ATIS 127.8

TRANSITION ALTITUDE  
11,000 FT

ADGAB 3F  
BASUV 3F  
BENLI 3F  
EKETO 3F  
DUNAS 3F  
NOKER 3F



CLIMB GRADIENT		GROUND SPEED (KT)				
		150	180	210	240	270
4%	FT/ NM	608	729	851	972	1094

### COMMUNICATION FAILURE :

SQUAWK 7600

- IF UNDER PILOT NAVIGATION, MAINTAIN LAST ASSIGNED LEVEL FOR 3 MINUTES, IF NO ONWARD CLEARANCE IS RECEIVED. SUBSEQUENTLY CLIMB TO COMPLY WITH SID.
- IF UNDER RADAR VECTORIZING : MAINTAIN VECTOR FOR 2 MINUTES, IF BELOW MSA, CLIMB TO MSA, THEN TRACK TO INTERCEPT CLEARED OR PREVIOUSLY ASSIGNED SID TO DESTINATION.