

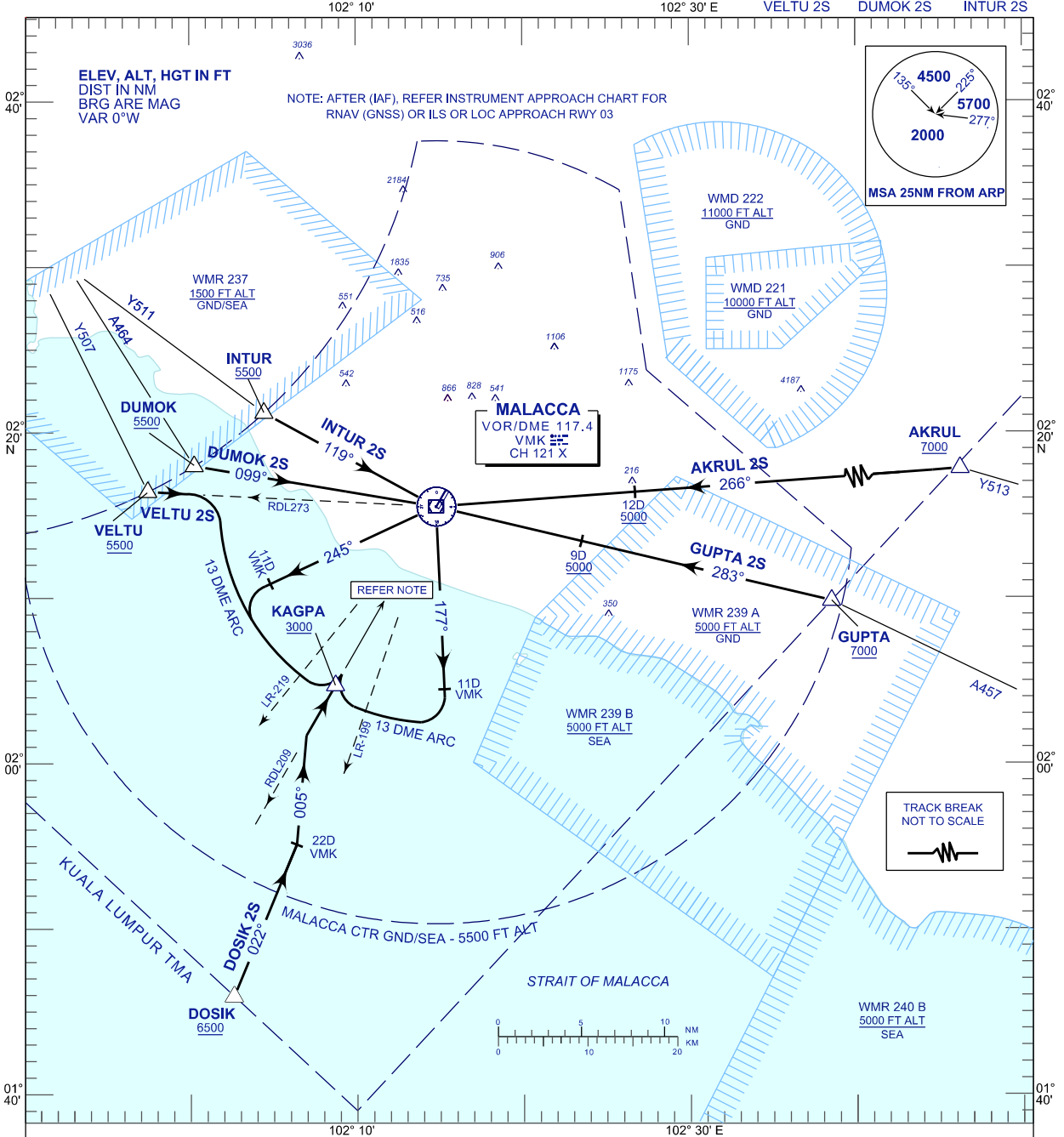
STANDARD ARRIVAL CHART INSTRUMENT (STAR) - ICAO

TRANSITION ALTITUDE
11 000 FT

| | |
|------|--------|
| TWR | 118.00 |
| SMC | 121.60 |
| ATIS | 127.45 |

MALACCA/MALACCA (WMKM) ARRIVAL (13 DME ARC) RWY03

| | | |
|----------|----------|----------|
| AKRUL 2S | GUPTA 2S | DOSIK 2S |
| VELTU 2S | DUMOK 2S | INTUR 2S |



COMMUNICATION FAILURE :

SQUAWK 7600

- IF UNDER PILOT NAVIGATION, MAINTAIN LAST ASSIGNED LEVEL FOR 3 MINUTES, IF NO ONWARD CLEARANCE IS RECEIVED. SUBSEQUENTLY CLIMB/DESCEND TO COMPLY WITH STAR AND LAND.
- IF UNDER RADAR VECTORED : MAINTAIN VECTOR FOR 1 MINUTES, IF BELOW MSA, CLIMB TO MSA, THEN TRACK TO INTERCEPT CLEARED OR PREVIOUSLY ASSIGNED STAR AND LAND.