

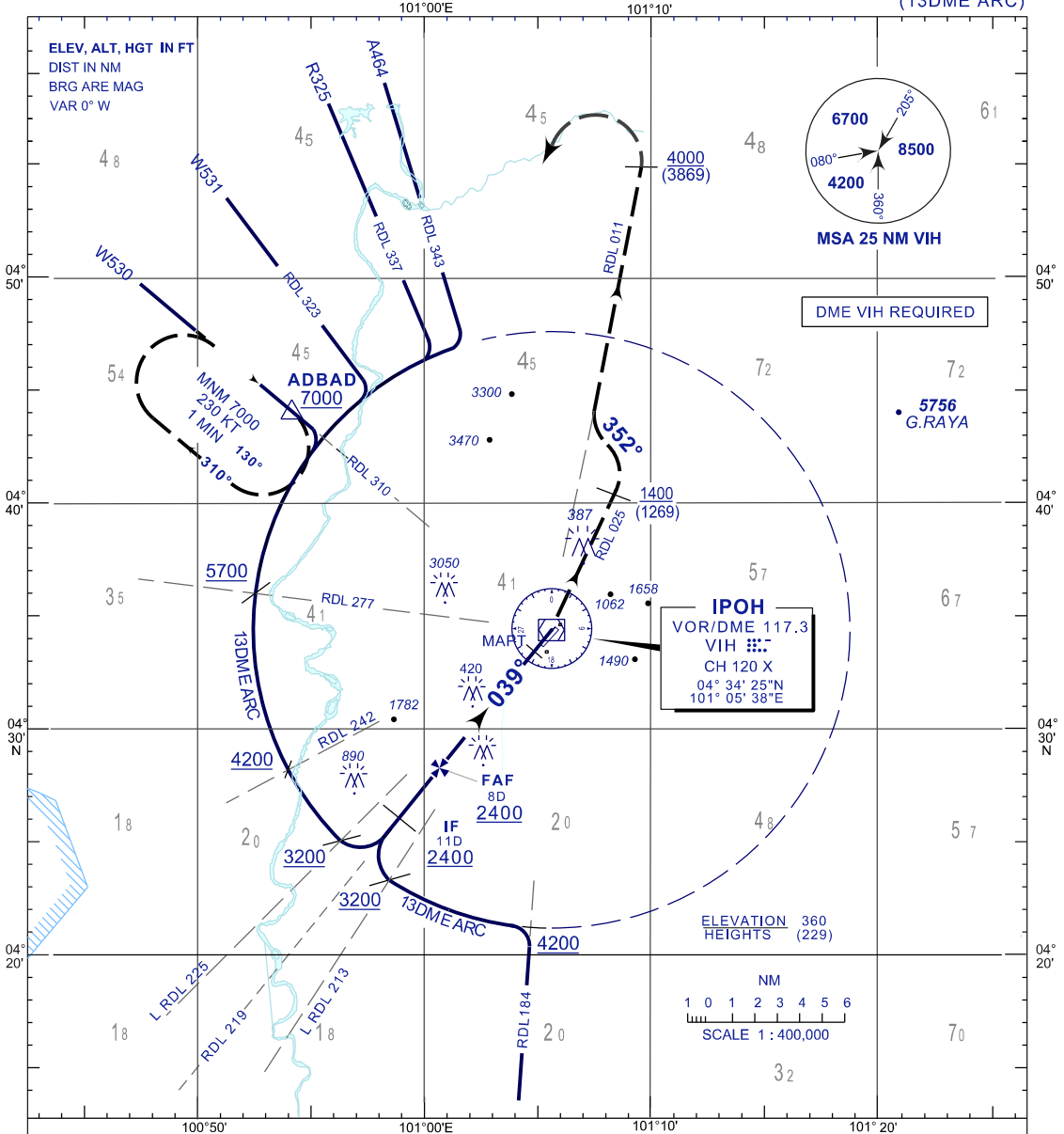
INSTRUMENT APPROACH CHART- ICAO

AERODROME ELEV 131 FT
 HEIGHTS RELATED TO
 THR RWY 04 - ELEV 130 FT

TWR 122.1
 SMC 121.6
 ATIS 127.05

IPOH/SULTAN AZLAN SHAH (WMKI) RWY04

VOR Y (13DME ARC)

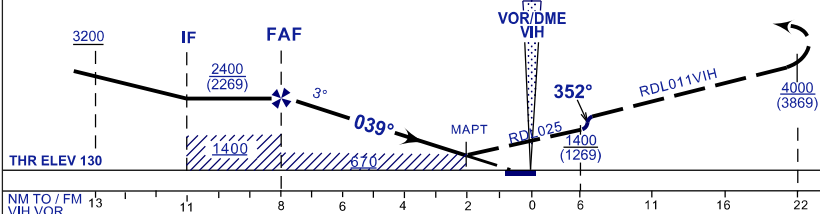


TRANSITION ALT 11000

USE QNH

MISSED APPROACH

CLIMB 039° TO VIH VOR THEN RDL025 UNTILL PASSING 1400FT THEN TURN LEFT 352° INTERCEPT RDL011. CONTINUE CLIMB 7000FT ON PASSING 4000FT TURN LEFT TO HOLD OVER ABDAB OR AS DIRECTED BY ATC



OCA/H	A	B	C	D
VOR/DME	670 (539) / 2.4DME			
CIRCLING / VISIBILITY	700(569)/1NM	NOT PERMITTED		

	KT	70	90	120	150
FAF - MAPT MIN : SEC		3:22	2:37	1:58	1:34
RATE OF DESCEND FT/MIN		370	480	640	800

ALTITUDE / HEIGHT ON FINAL APPROACH							
DME FM VIH	8.0	7.0	6.0	5.0	4.0	3.0	2.4
ALT(HGT)	2400(2269)	2060(1929)	1740(1609)	1420(1289)	1100(969)	790(659)	670(539)