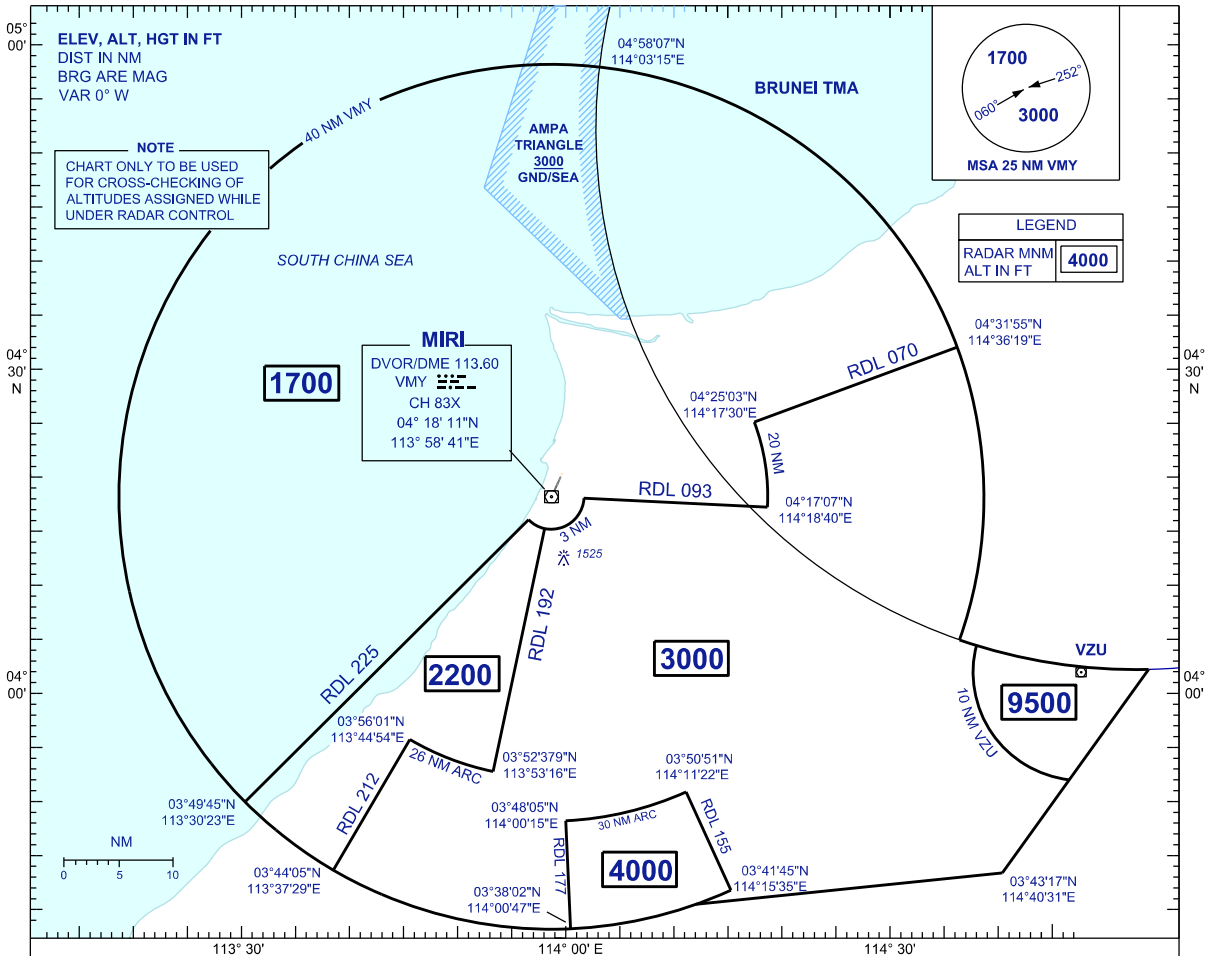


**ATC SURVEILLANCE MINIMUM
ALTITUDE CHART - ICAO**

**AERODROME ELEV 59FT
TRANSITION ALTITUDE 11 000 FT**

MIRI APP 129.9(P)
122.7(S)

MIRI/MIRI (WBGR)



NOTE:

1. BEARINGS AND ARC FROM VMY DVOR/DME
2. CHART ONLY TO BE USED FOR CROSS-CHECKING OF ALTITUDES ASSIGNED WHILE UNDER RADAR CONTROL

COMMUNICATION FAILURE:

1. SQUAWK 7600
2. IF IN VMC, CONTINUE VISUALLY AND LAND
3. IF IN IMC, MAINTAIN LAST ASSIGNED LEVEL OR 4000 FT WHICHEVER IS HIGHER, PROCEED DIRECT TO VMY DVOR/DME
4. EXECUTE STANDARD COM FAILURE FROM OVERHEAD VMY