

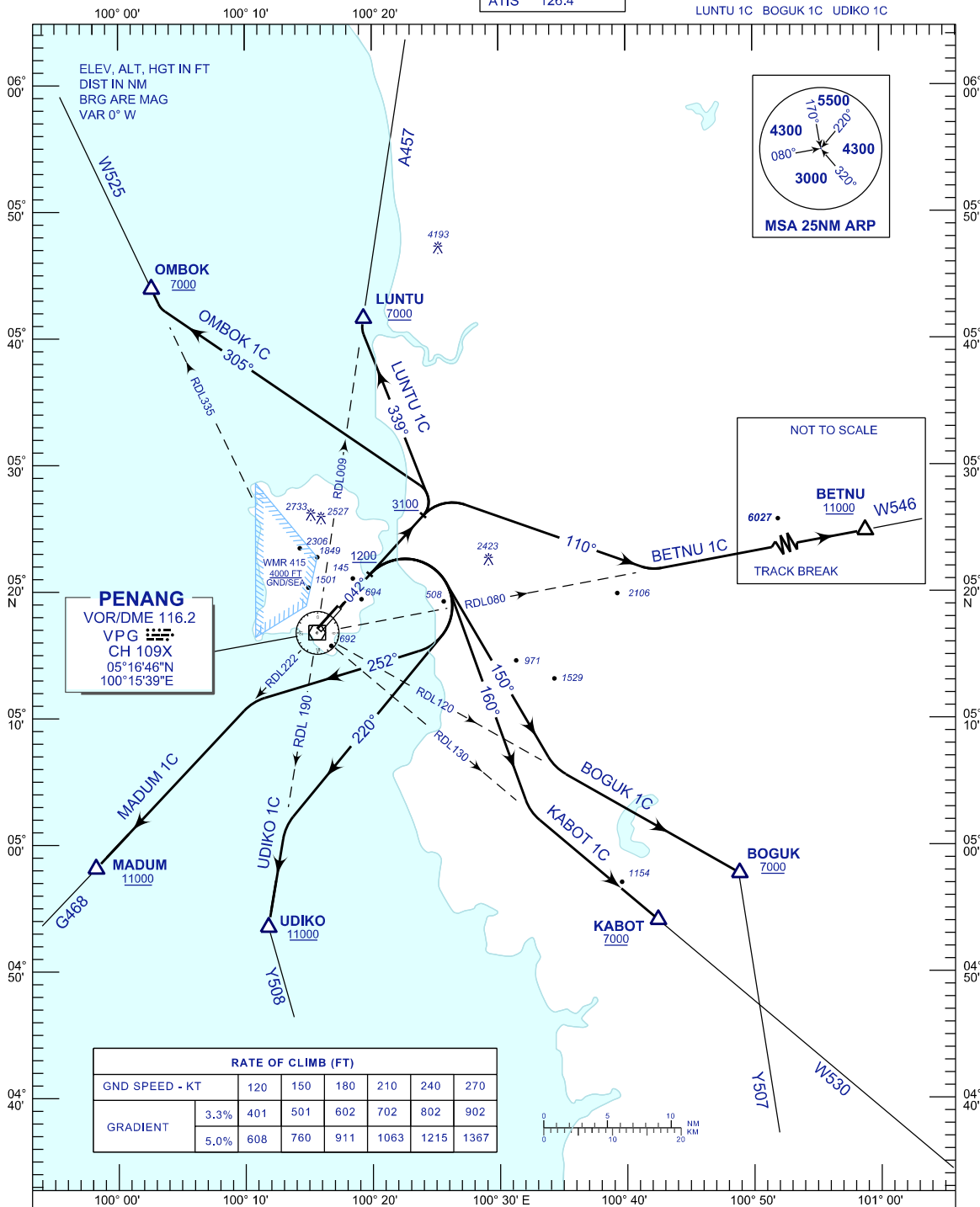
STANDARD DEPARTURE CHART INSTRUMENT (SID) - ICAO

TRANSITION ALTITUDE
11000 FT

APP 125.925
TWR 121.1
SMC 121.6, 121.9
ATIS 126.4

PENANG/PENANG INTERNATIONAL AIRPORT (WMKP) RWY 04

OMBOK 1C BETNU 1C KABOT 1C MADUM 1C
LUNTU 1C BOGUK 1C UDIKO 1C



COMMUNICATION FAILURE :

SQUAWK 7600

- IF UNDER PILOT NAVIGATION, MAINTAIN LAST ASSIGNED LEVEL FOR 3 MINUTES, IF NO ONWARD CLEARANCE IS RECEIVED, SUBSEQUENTLY CLIMB TO COMPLY WITH SID.
- IF UNDER RADAR VECTORED : MAINTAIN VECTOR FOR 2 MINUTES, IF BELOW MSA, CLIMB TO MSA, THEN TRACK TO INTERCEPT CLEARED OR PREVIOUSLY ASSIGNED SID TO DESTINATION.

CHANGES : CHANGE APP FREQUENCY VALUE.