

**STANDARD ARRIVAL CHART
INSTRUMENT (STAR) - ICAO**

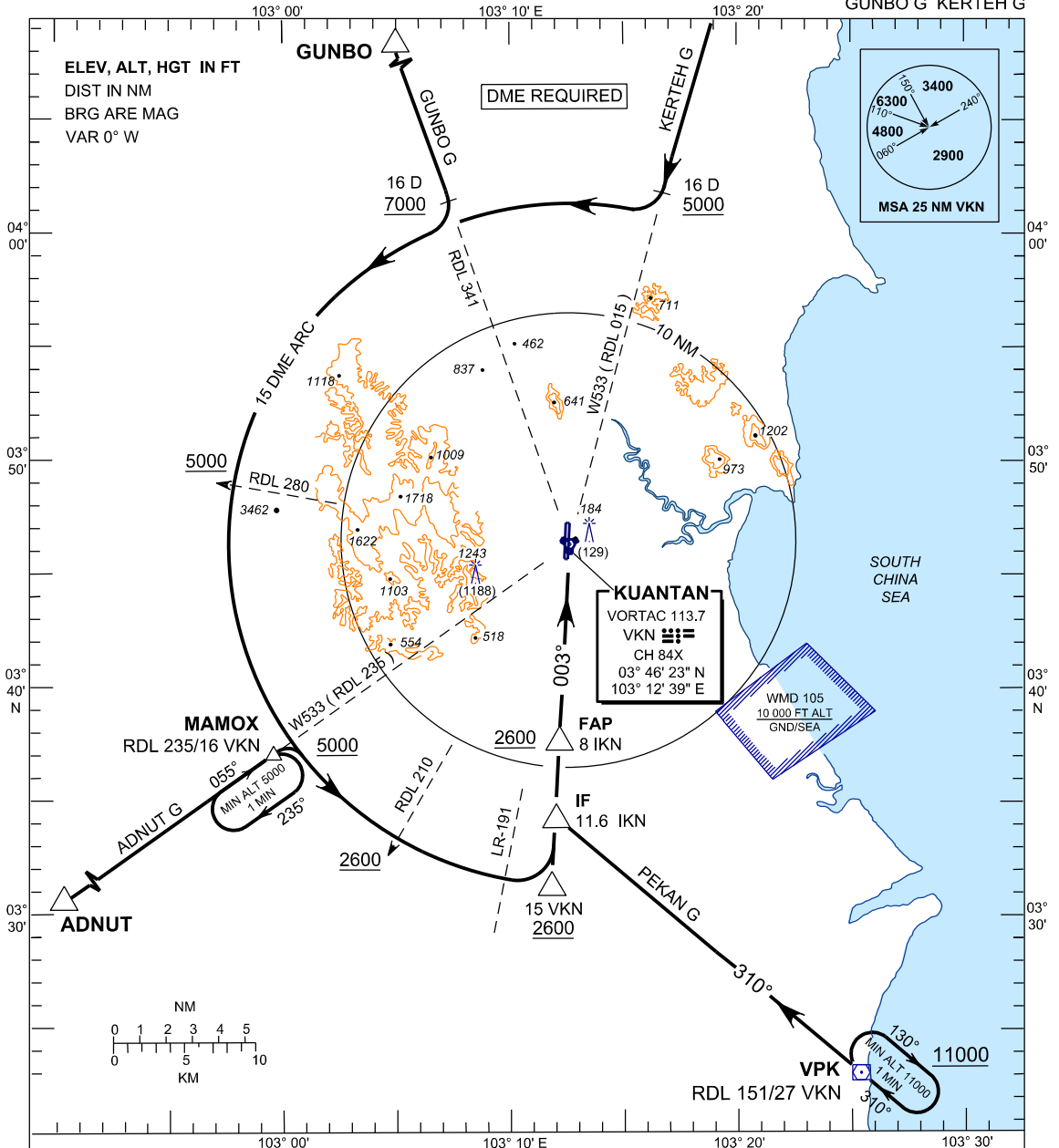
TWR 118.1, 238.1
GND 263.9, 120.4
APP 119.7, 121.5
ATIS 127.5, 253.8
SRA 261.6, 118.7

**KUANTAN/SULTAN
AHMAD SHAH (WMKD)
RWY 36**

BANK ANGLE = 25° OR 3°/SEC

TRANSITION ALTITUDE
11,000 FT

ADNUT G PEKAN G
GUNBO G KERTEH G



ADNUT G ARRIVAL

- FROM ADNUT ON W533 DIRECT TO VKN
- AT 16 DME FOLLOW ARC 15 DME VKN TO IF
- INTERCEPT LOC

PEKAN G ARRIVAL

- FROM PEKAN (VPK) ON RDL 310 DIRECT TO IF
- INTERCEPT LOC

GUNBO G ARRIVAL

- FROM GUNBO ON RDL 341 VKN DIRECT TO VKN
- AT 16 DME FOLLOW ARC 15 DME VKN TO IF
- INTERCEPT LOC

KERTEH G ARRIVAL

- FROM KERTEH (VPK) ON W533 DIRECT TO VKN
- AT 16 DME FOLLOW ARC 15 DME VKN TO IF
- INTERCEPT LOC

VERTICAL RESTRICTIONS

ADHERE TO VERTICAL RESTRICTIONS eg. 5000 = NOT BELOW 5000 FT ON DESCENT UNLESS SPECIFICALLY CANCELLED BY ATC

COMMUNICATION FAILURE :

- * SQUAWK 7600
- * IF UNDER PILOT NAVIGATION, CONTINUE ON STAR AND LAND
- * IF UNDER 'RADAR VECTORED' : MAINTAIN VECTOR FOR 1 MINUTE
- * IF BELOW 'MSA', CLIMB TO 'MSA', THEN TRACK TO INTERCEPT CLEARED OR PREVIOUSLY ASSIGNED STAR AND LAND

CHANGES : AT PEKAN (VPK), AMEND ALTITUDE TO 11000 FT