

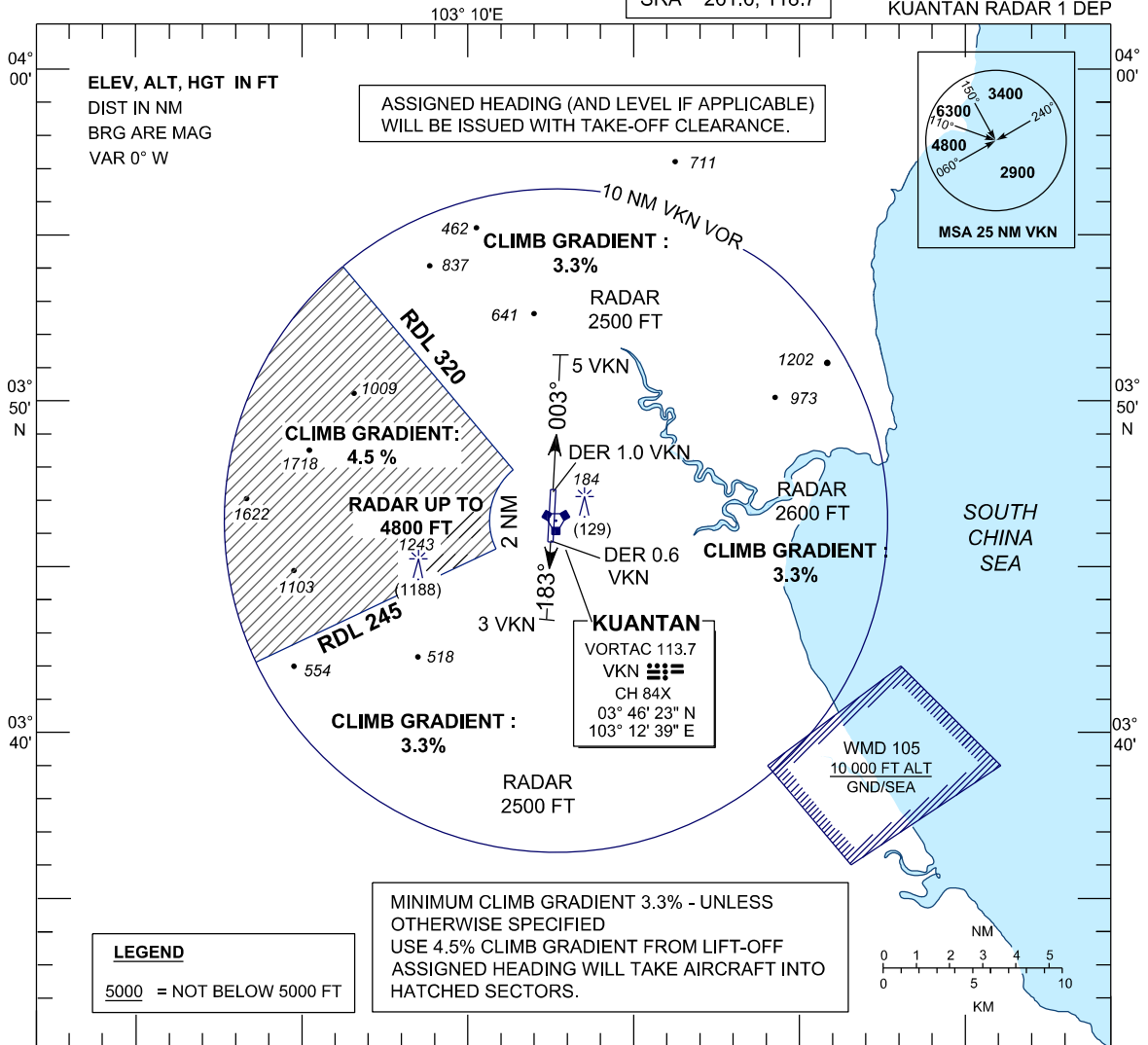
**STANDARD DEPARTURE CHART
INSTRUMENT (SID) - ICAO**

TWR 118.1, 238.1
GND 263.9, 120.4
APP 119.7, 121.5
ATIS 127.5, 253.8
SRA 261.6, 118.7

**KUANTAN/SULTAN
AHMAD SHAH (WMKD)
RWY 18 / 36**

TRANSITION ALTITUDE
11,000 FT

KUANTAN RADAR 1 DEP



STANDARD RADAR DEPARTURES KUANTAN RADAR 1 DEPARTURE

RWY 18

- TRACK 183° AT 3 DME VKN TURN TO ASSIGNED HEADING CONTACT APPROACH AIRBORNE

ADVISE : DIRECTION OF TURN & ASSIGNED HEADING
LEVEL PASSING TO NEAREST 100 FT
ASSIGNED LEVEL

RWY 36

- TRACK 003° AT 5 DME VKN TURN TO ASSIGNED HEADING CONTACT APPROACH AIRBORNE

ADVISE : DIRECTION OF TURN & ASSIGNED HEADING
LEVEL PASSING TO NEAREST 100 FT
ASSIGNED LEVEL

FOR LEFT TURN DEPARTURE: MAX. IAS 265 KT. IN TURN - WMD 105

RATE OF CLIMB IN FT/MIN.

GROUND SPEED (KT)	120	130	140	150	160	170	180	190	200	220	240	260	280	300
GRADIENT 4.5%	547	592	638	683	729	775	820	865	911	1002	1094	1185	1276	1367

COMMUNICATIONS FAILURE ;

- IMMEDIATELY SQUAWK 7600
- MAINTAIN ASSIGNED HEADING - CLIMB TO MSA OR LAST ASSIGNED LEVEL IF HIGHER
- MAINTAIN MSA OR ASSIGNED LEVEL, AS APPLICABLE FOR 2 MINUTES
- THEN CLIMB TO PLANNED FLIGHT LEVEL AND INTERCEPT FLIGHT PLANNED TRACK (AS AMMENDED BY ATC, IF APPLICABLE)