

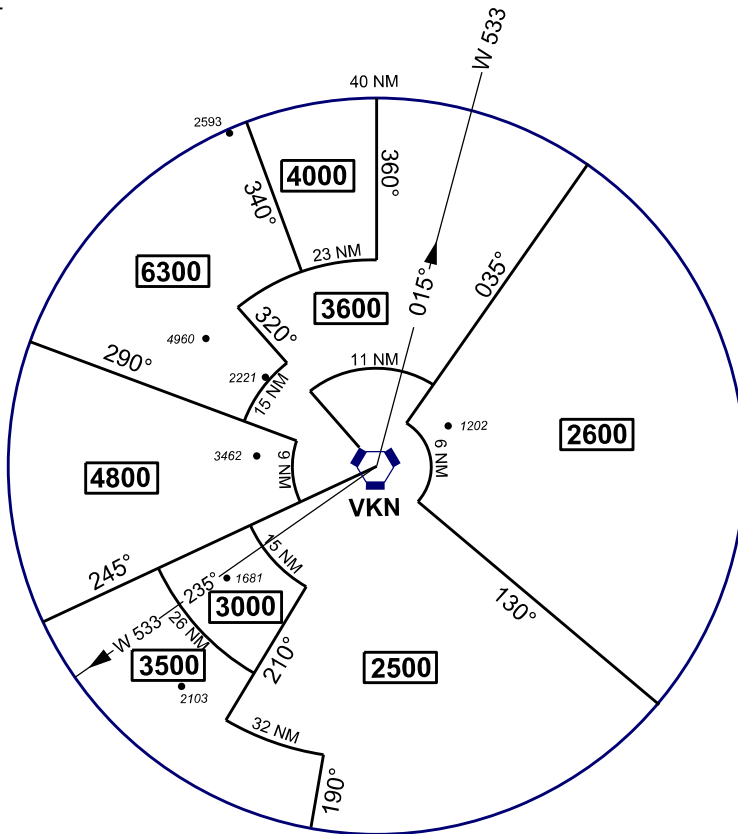
**ATC SURVEILLANCE MINIMUM  
ALTITUDE CHART - ICAO**

**AERODROME ELEV 54.7 FT  
TRANSITION ALT 11,000 FT**

TWR 118.1, 238.1  
GND 263.9, 120.4  
APP 119.7, 121.5  
ATIS 127.5, 253.8  
SRA 261.6, 118.7

**KUANTAN/KUANTAN**

ELEV, ALT, HGT IN FT  
DIST IN NM  
BRG ARE MAG  
VAR 0° W



NOT TO SCALE

**LOSS OF RADIO COMMUNICATION PROCEDURES :**

1. SET TRANSPONDER TO 7600
2. A) IN VMC  
CONTINUE APPROACH VISUALLY FOR THE DUTY RUNWAY AND LAND; OR  
B) IN IMC  
MAINTAIN LAST ASSIGNED ALTITUDE; OR CLIMB TO MSA IF THE ASSIGNED ALTITUDE IS BELOW MSA AND TRACK DIRECT TO VKN VOR
3. AT THE HOLDING FACILITY VKN, CARRY OUT THE STANDARD RADIO COMMUNICATION FAILURE PROCEDURE.
4. MILITARY AIRCRAFT SHALL CARRY OUT THE STANDARD RADIO COMMUNICATION FAILURE PROCEDURE AS STATED IN THE KUANTAN UOI.

**NOTE :**

THE SMA COMPRISES AN AREA OF 40 NM RADIUS OF VKN VOR/TAC STATION. RADAR VECTORING SERVICES SHALL BE PROVIDED WITHIN KUANTAN CTR

ALL BEARINGS ARE MAGNETIC AND TAKEN FROM VKN. ONLY SIGNIFICANT OBSTRUCTIONS AND SPOT HEIGHTS ARE SHOWN. THESE ARE BASED ON QNH.

ALTITUDES SHOWN PROVIDE 1000 FEET OF CLEARANCE OVER ALL OBSTACLES WITHIN 3 NM OF THE AREA BOUNDARY WHEN UP TO 20 NM FROM THE RADAR ANTENNA, OR WITHIN 5 NM OF THE BOUNDARY AT DISTANCE GRATER THAN 20 NM FROM THE ANTENNA.