

**STANDARD ARRIVAL CHART  
INSTRUMENT (STAR) - ICAO**

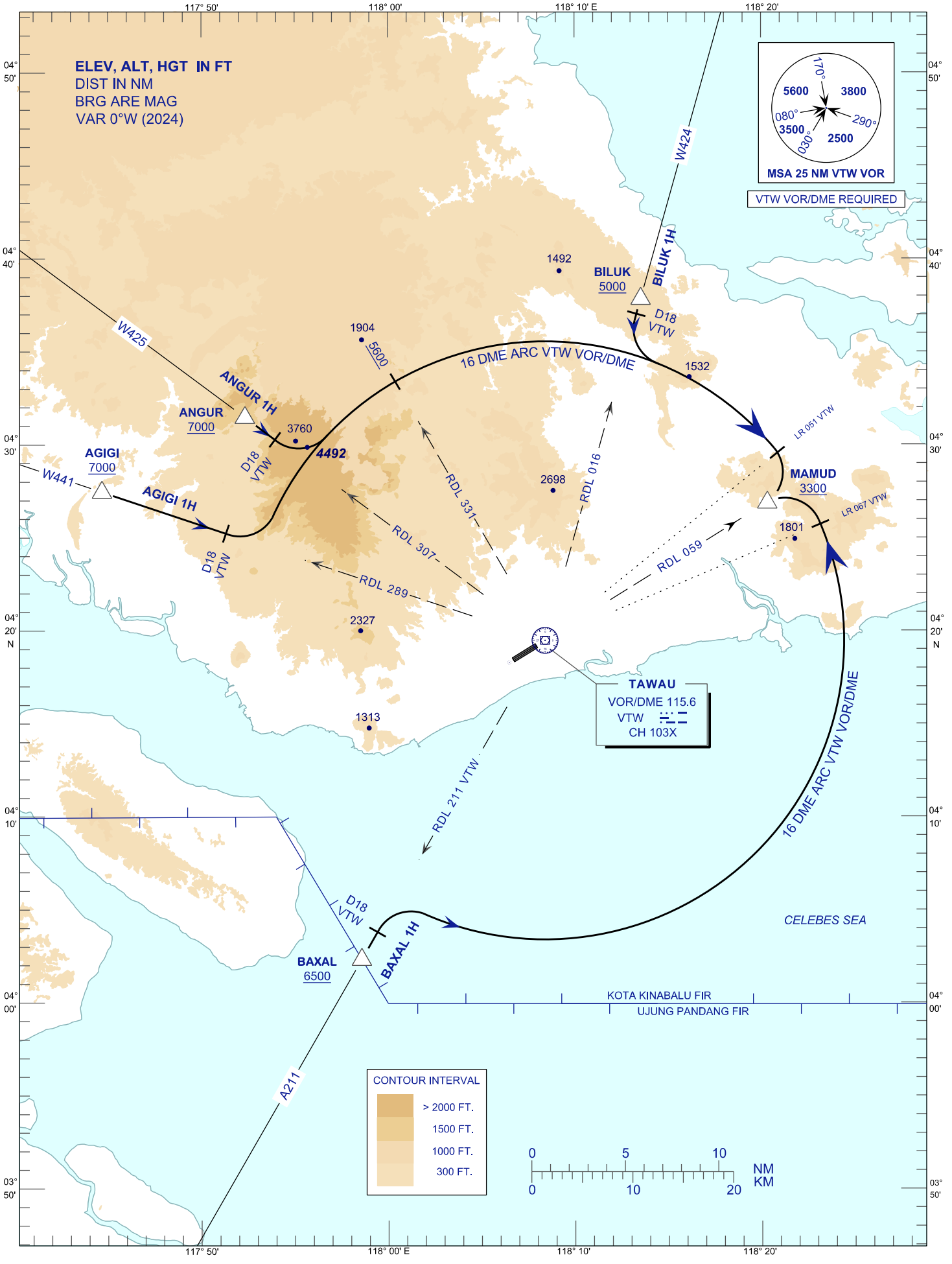
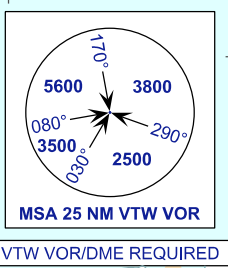
TRANSITION ALTITUDE  
11000FT

APP 123.55  
TWR 122.50  
SMC 121.90  
ATIS 126.25

**TAWAU/TAWAU (WBKW)  
VOR/DME ARC RWY24**

AGIGI 1H  
BILUK 1H  
ANGUR 1H  
BAXAL 1H

ELEV, ALT, HGT IN FT  
DIST IN NM  
BRG ARE MAG  
VAR 0°W (2024)



**TAWAU**  
VOR/DME 115.6  
VTW  
CH 103X

