

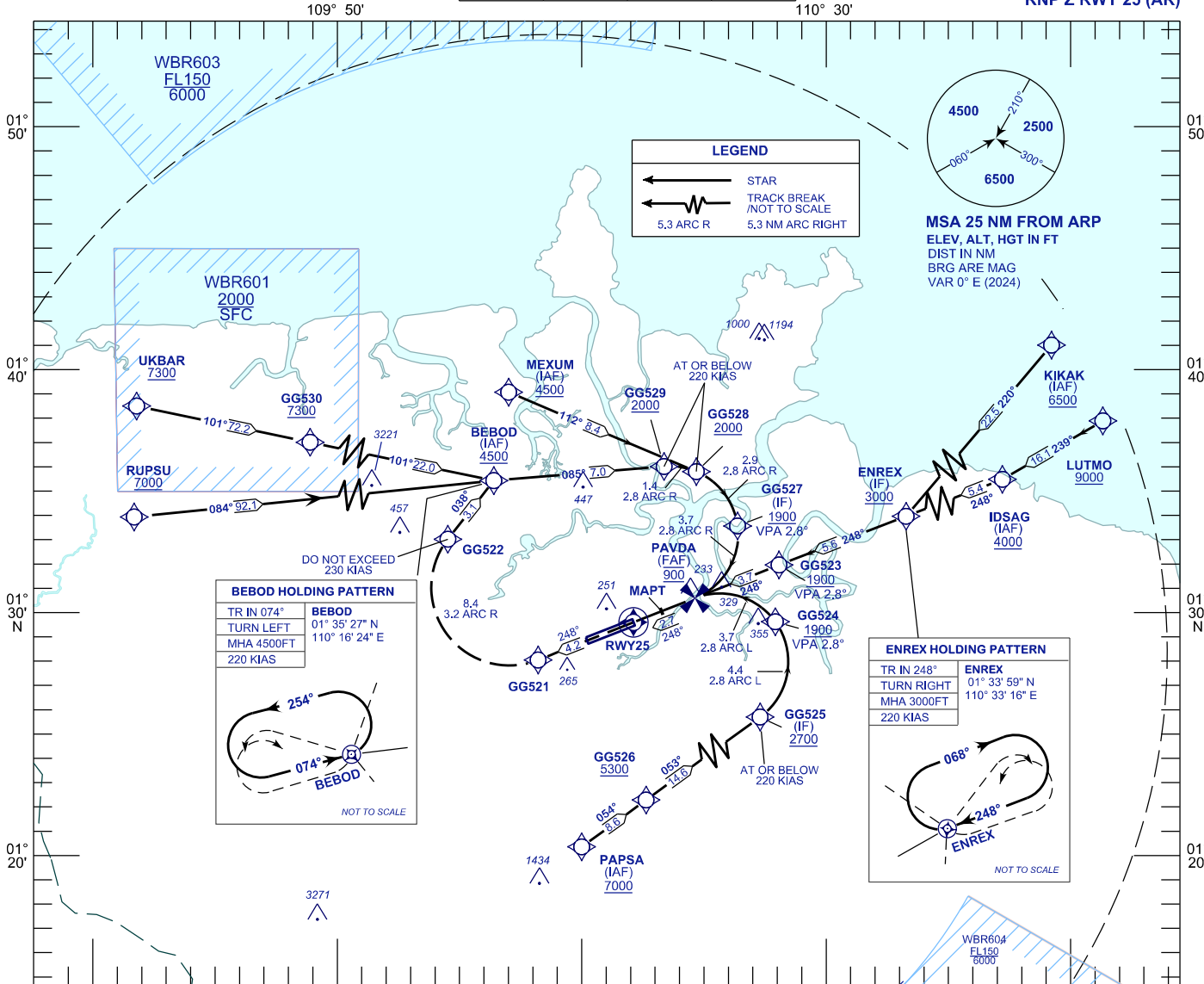
**INSTRUMENT  
APPROACH  
CHART - ICAO**

**AERODROME ELEV 88 FT**  
HEIGHT RELATED TO  
THR RWY 25 - ELEV 42 FT

APP	TWR	SMC	ATIS
120.2	118.1	121.9	128.4
123.85	121.7		

**KUCHING/KUCHING  
INTERNATIONAL AIRPORT (WBGG)**

RNP Z RWY 25 (AR)



**BEBOD HOLDING PATTERN**

TR IN 074°	BEBOD
TURN LEFT	01° 35' 27" N
MHA 4500FT	110° 16' 24" E
220 KIAS	

DO NOT EXCEED 230 KIAS

NOT TO SCALE

**ENREX HOLDING PATTERN**

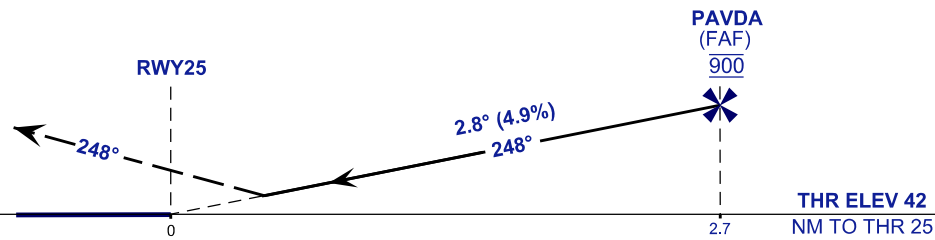
TR IN 248°	ENREX
TURN RIGHT	01° 33' 59" N
MHA 3000FT	110° 33' 16" E
220 KIAS	

NOT TO SCALE

VPA 2.8°  
RDH 54FT

**MISSED APPROACH**  
CLIMB TO 4500FT VIA THE RNP MISSED APPROACH  
TRACK TO BEBOD OR AS DIRECTED BY ATC

TRANSITION LEVEL FL130  
TRANSITION ALT 11 000



STRAIGHT - IN APPROACH	OCA (OCH)		GROUND SPEED - KT					
CATEGORY OF AIRCRAFT	C	D	70	90	100	120	140	160
RNP 0.3	465 (423)		RATE OF DESCENT (2.8°) ( FEET/MIN )					
CIRCLING AND ALTERNATE N/A			347	446	495	594	693	792
			DISTANCE TO THRESHOLD (NM)			ALTITUDE (FEET)		
			2.7	2	1	900	670	370

- 1. AUTHORIZATION REQUIRED
- 2. GNSS REQUIRED
- 3. RF REQUIRED
- 4. APPROACH NOT AUTHORIZED WHEN AIRPORT TEMPERATURE BELOW 19°C OR ABOVE 40°C.
- 5. WBGG ALTIMETER SETTING REQUIRED.
- 6. PAPI AND VERTICAL PATH ANGLE NOT COINCIDENT.
- 7. CLIMB GRADIENT 4.2% REQUIRED TO REACH BEBOD AT 4500 FT.
- 8. RNP 1.0 REQUIRED TO BEBOD, ENREX AND GG526.
- 9. RNP 0.3 REQUIRED FROM BEBOD, ENREX, GG526 AND MEXUM TO RWY.