

STANDARD ARRIVAL CHART INSTRUMENT (STAR) - ICAO

KUCHING/KUCHING (WBGG) RWY 25 (VOR/DME)

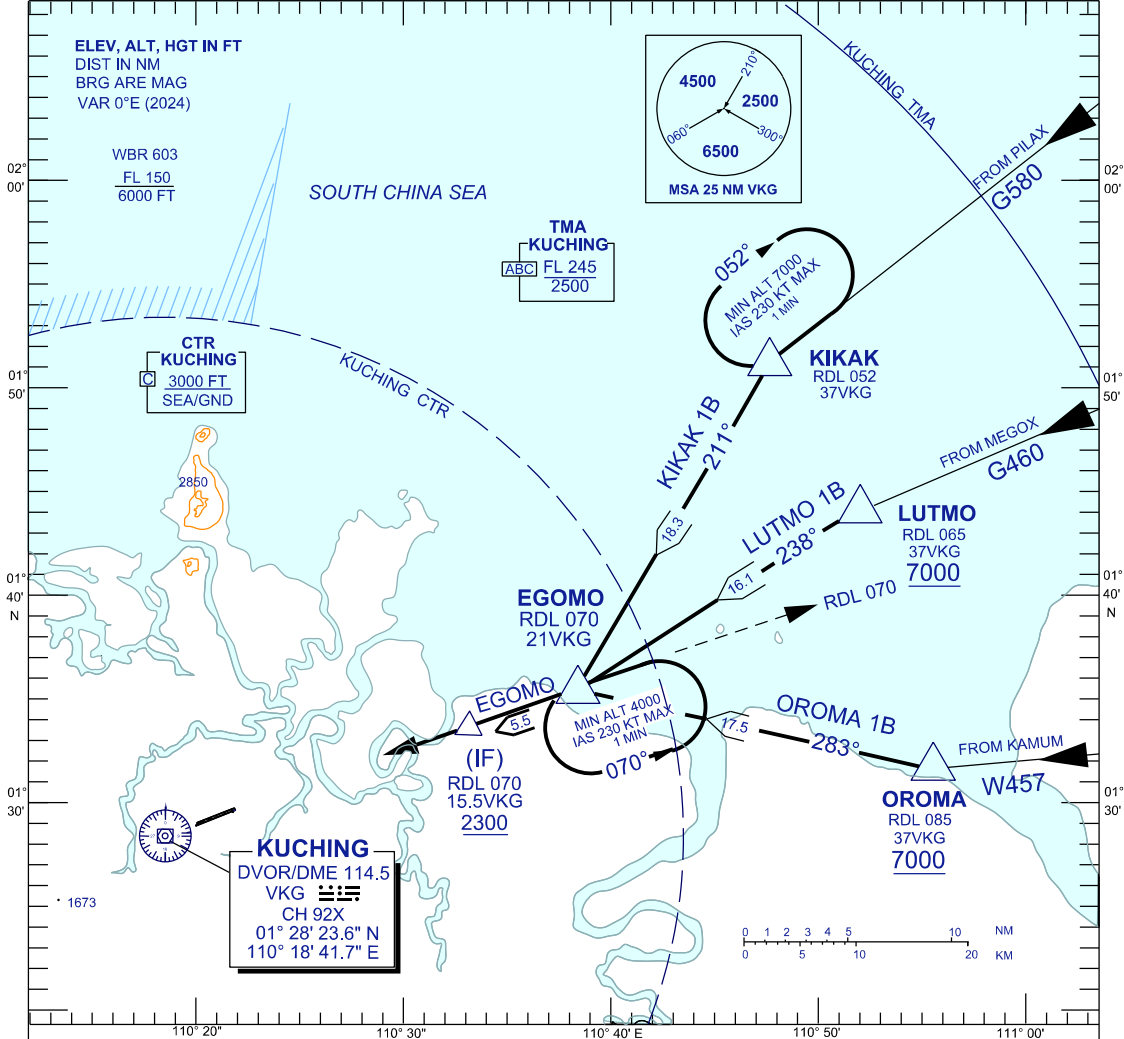
TRANSITION ALTITUDE
11,000 FT

TWR	118.1 (P)	SMC	121.9
	121.7 (S)	ATIS	128.4
APP	120.2 (P)	FIS	134.75
	123.85 (S)		
ACC	134.5 (P)		
	125.35 (S)		

KIKAK 1B LUTMO 1B
OROMA 1B

BANK ANGLE : 25° OR 3°/SEC

110° 30'



ARRIVALS

- KIKAK ONE BRAVO :** FROM KIKAK TRACK 211° TO EGOMO, THEN TRACK TO IF
- LUTMO ONE BRAVO :** FROM LUTMO TRACK 238° TO EGOMO, THEN TRACK TO IF
- OROMA ONE BRAVO :** FROM OROMA TRACK 283° TO EGOMO, THEN TRACK TO IF

INTERCEPT RDL 070 VKG FOR VOR Z RWY 25 OR INTERCEPT LOC IKG FOR ILS Z/LOC Z RWY 25.

VERTICAL RESTRICTIONS :

ADHERE TO VERTICAL RESTRICTIONS eg. 7000 = NOT BELOW 7000 FT ON DESCENT UNLESS SPECIFICALLY CANCELLED BY ATC.

COMMUNICATIONS FAILURE :

- * SQUAWK 7600
- * IF UNDER PILOT NAVIGATION, CONTINUE ON STAR AND LAND
- * IF UNDER RADAR VECTORED, MAINTAIN VECTOR FOR 1 MINUTE, IF BELOW MSA, CLIMB TO MSA, THEN TRACK TO INTERCEPT CLEARED OR PREVIOUSLY ASSIGNED STAR AND LAND