

STANDARD ARRIVAL CHART INSTRUMENT (STAR) - ICAO

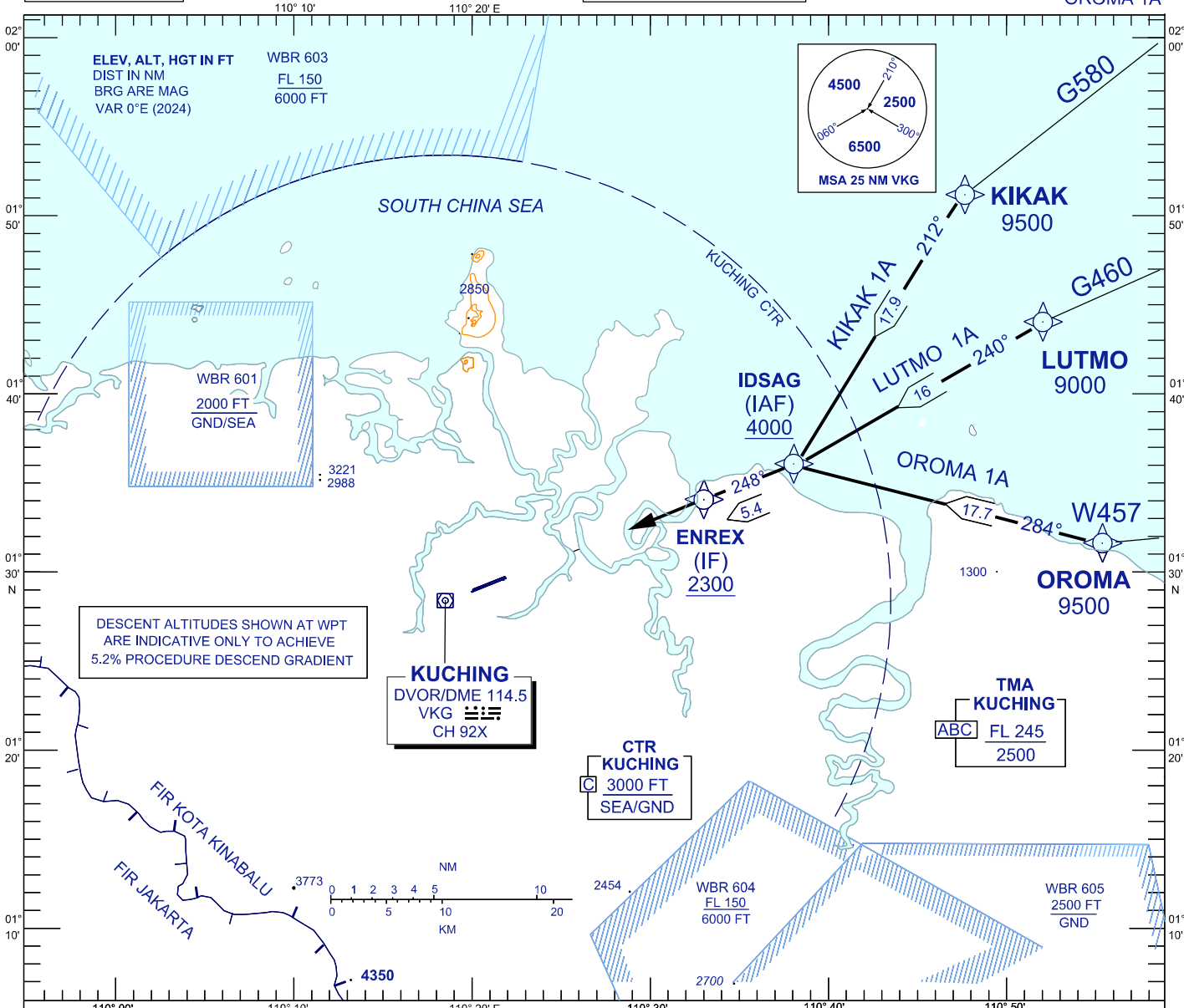
KUCHING/KUCHING (WBGG) RWY 25 (RNAV)

TWR	118.1 (P)	SMC	121.9
	121.7 (S)	ATIS	128.4
APP	120.2 (P)	FIS	134.75
	123.85 (S)		
ACC	134.5(P)		
	125.35 (S)		

TRANSITION ALTITUDE
11,000 FT

BANK ANGLE : 25° OR 3°/SEC

KIKAK 1A LUTMO 1A
OROMA 1A



ARRIVALS

- KIKAK ONE ALPHA** : FROM KIKAK TRACK TO IDSAG, THEN TRACK TO ENREX,
- LUTMO ONE ALPHA** : FROM LUTMO TRACK TO IDSAG, THEN TRACK TO ENREX,
- OROMA ONE ALPHA** : FROM OROMA TRACK TO IDSAG, THEN TRACK TO ENREX,

FROM ENREX INTERCEPT LOC IKG FOR ILS Z/LOC Z RWY 25 OR INTERCERPT RDL 070 VKG FOR VOR Z RWY 25.

VERTICAL RESTRICTIONS :

ADHERE TO VERTICAL RESTRICTIONS eg. 4000 = NOT BELOW 4000 FT ON DESCENT UNLESS SPECIFICALLY CANCELLED BY ATC.

COMMUNICATIONS FAILURE :

- * SQUAWK 7600
- * IF UNDER PILOT NAVIGATION, CONTINUE ON STAR AND LAND
- * IF UNDER RADAR VECTORED, MAINTAIN VECTOR FOR 1 MINUTE, IF BELOW MSA, CLIMB TO MSA, THEN TRACK TO INTERCEPT CLEARED OR PREVIOUSLY ASSIGNED STAR AND LAND