

# STANDARD ARRIVAL CHART INSTRUMENT (STAR) - ICAO

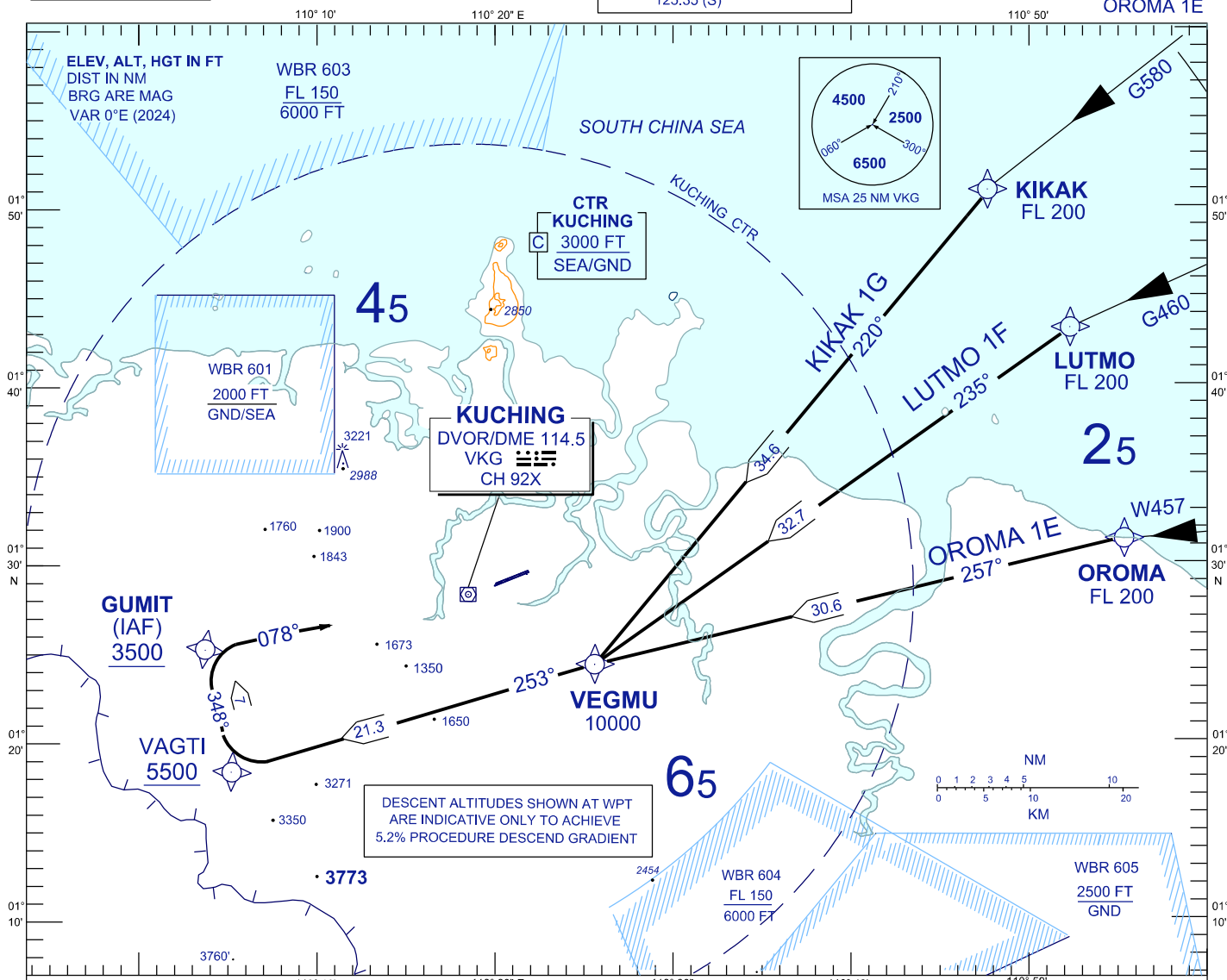
TRANSITION ALTITUDE  
11,000 FT

TWR	118.1 (P)	SMC	121.9
	121.7 (S)	ATIS	128.4
APP	120.2 (P)	FIS	134.75
	123.85 (S)		
ACC	134.5 (P)		
	125.35 (S)		

**KUCHING/KUCHING (WBGG)**  
**RWY 07 (RNAV)**

KIKAK 1G LUTMO 1F  
OROMA 1E

BANK ANGLE : 25° OR 3°/SEC



## ARRIVALS

- KIKAK ONE GOLF** : FROM KIKAK TRACK TO VEGMU,  
THEN TRACK TO VAGTI AND TO GUMIT,  
INTERCEPT RDL 258 VKG FOR VOR Z RWY 07 APPROACH.
- LUTMO ONE FOXTROT** : FROM LUTMO TRACK TO VEGMU,  
THEN TRACK TO VAGTI AND TO GUMIT,  
INTERCEPT RDL 258 VKG FOR VOR Z RWY 07 APPROACH.
- OROMA ONE ECHO** : FROM OROMA TRACK TO VEGMU,  
THEN TRACK TO VAGTI AND TO GUMIT,  
INTERCEPT RDL 258 VKG FOR VOR Z RWY 07 APPROACH.

## VERTICAL RESTRICTIONS :

ADHERE TO VERTICAL RESTRICTIONS eg . 2300 = NOT BELOW 2300 FT ON DESCENT UNLESS SPECIFICALLY CANCELLED BY ATC

## COMMUNICATIONS FAILURE :

- \* SQUAWK 7600
- \* IF UNDER PILOT NAVIGATION, CONTINUE ON STAR AND LAND
- \* IF UNDER RADAR VECTORED, MAINTAIN VECTOR FOR 1 MINUTE,  
IF BELOW MSA, CLIMB TO MSA, THEN TRACK TO INTERCEPT  
CLEARED OR PREVIOUSLY ASSIGNED STAR AND LAND