

STANDARD ARRIVAL CHART INSTRUMENT (STAR) - ICAO

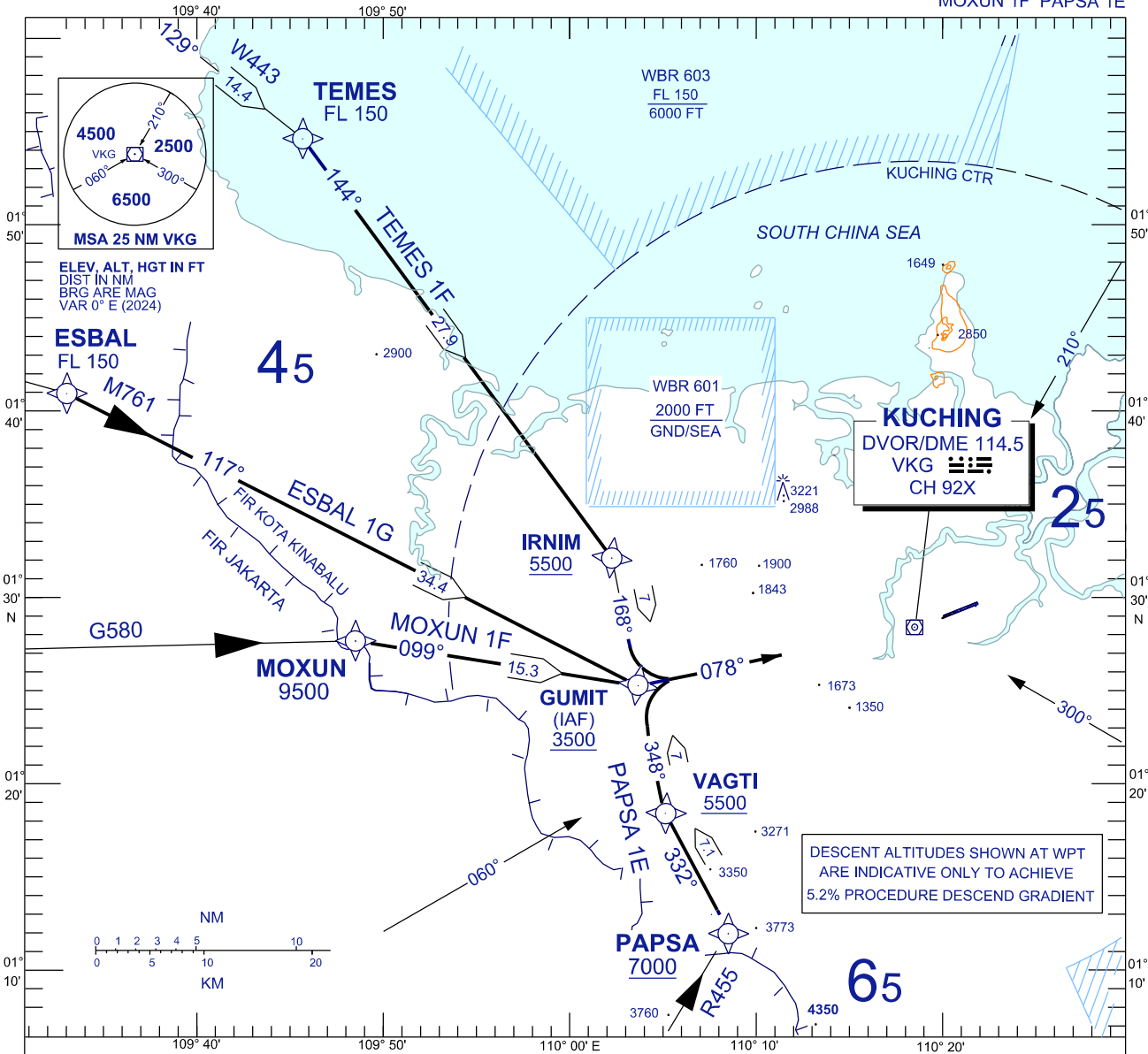
TRANSITION ALTITUDE
11,000 FT

TWR	118.1 (P)	SMC	121.9
	121.7 (S)	ATIS	128.4
APP	120.2 (P)	FIS	134.75
	123.85 (S)		
ACC	134.6 (P)		
	125.35 (S)		

KUCHING/KUCHING (WBGG) RWY 07 (RNAV)

TEMES 1F ESBAL 1G
MOXUN 1F PAPSA 1E

BANK ANGLE : 15° ACHEIVED



ARRIVALS

- TEMES ONE FOXTROT** : FROM TEMES TRACK TO IRNIM, THEN TRACK TO GUMIT, INTERCEPT RDL 258 VKG, FOR VOR Z RWY 07 APPROACH.
- ESBAL ONE GOLF** : FROM ESBAL TRACK TO GUMIT, INTERCEPT RDL 258 VKG, FOR VOR Z RWY 07 APPROACH.
- MOXUN ONE FOXTROT** : FROM MOXUN TRACK TO GUMIT, INTERCEPT RDL 258 VKG, FOR VOR Z RWY 07 APPROACH.
- PAPSA ONE ECHO** : FROM PAPSA TRACK TO VAGTI, THEN TRACK TO GUMIT, INTERCEPT RDL 258 VKG, FOR VOR Z RWY 07 APPROACH.

VERTICAL RESTRICTIONS :

ADHERE TO VERTICAL RESTRICTIONS eg . 5500 = NOT BELOW 5500 FT ON DESCENT UNLESS SPECIFICALLY CANCELLED BY ATC

COMMUNICATIONS FAILURE :

- * SQUAWK 7600
- * IF UNDER PILOT NAVIGATION, CONTINUE ON STAR AND LAND
- * IF UNDER RADAR VECTORED, MAINTAIN VECTOR FOR 1 MINUTE, IF BELOW MSA, CLIMB TO MSA, THEN TRACK TO INTERCEPT CLEARED OR PREVIOUSLY ASSIGNED STAR AND LAND