

**STANDARD DEPARTURE CHART
INSTRUMENT (SID) - ICAO**

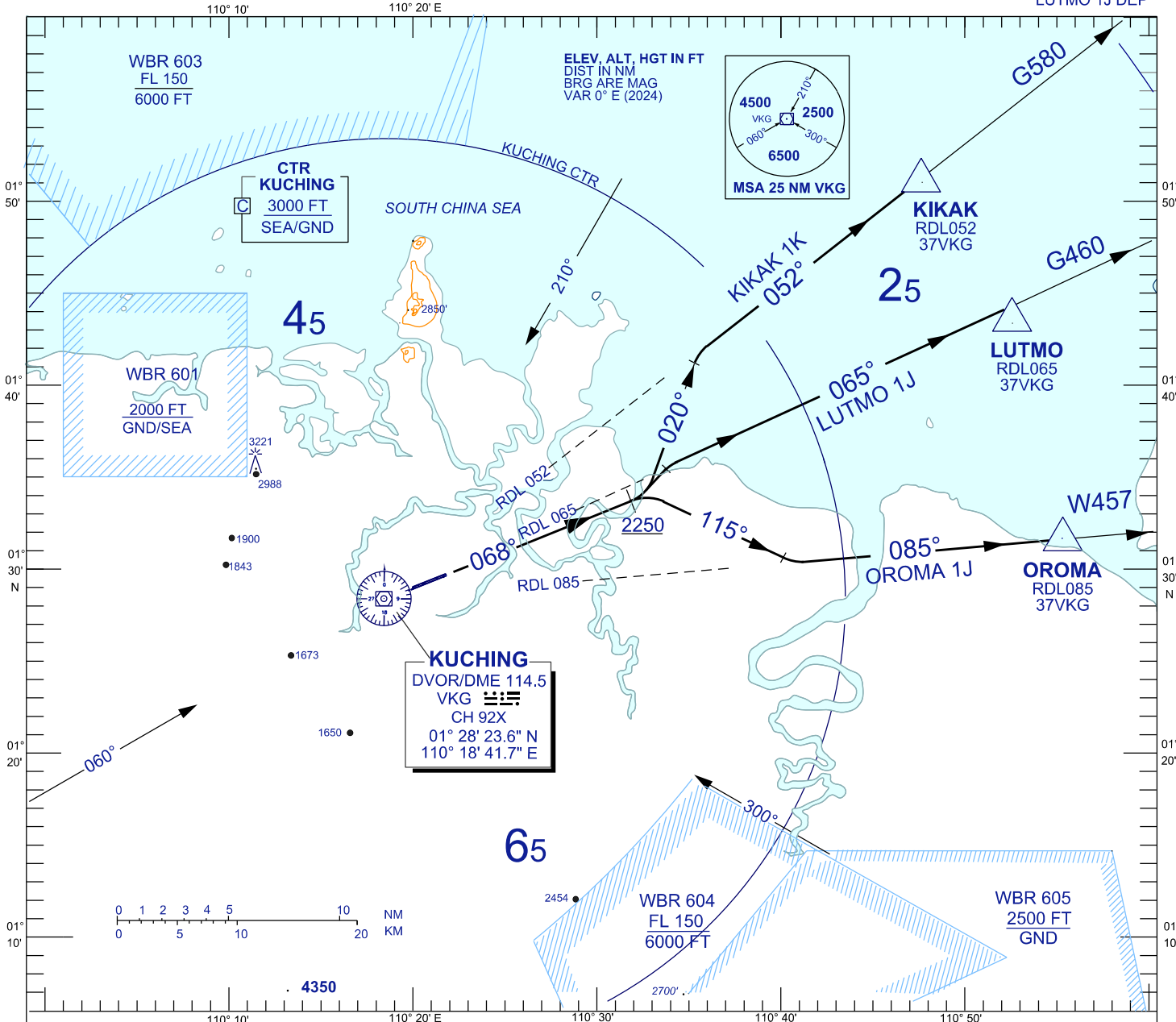
**KUCHING/KUCHING (WBGG)
RWY 07**

TWR	118.1 (P)	SMC	121.9
	121.7 (S)	ATIS	128.4
APP	120.2 (P)	FIS	134.75
	123.85 (S)		
ACC	134.5 (P)		
	125.35 (S)		

TRANSITION ALTITUDE
11,000 FT

BANK ANGLE : 15° ACHEIVED

OROMA 1J DEP KIKAK 1K DEP
LUTMO 1J DEP



RWY 07 DEP (RIGHT / LEFT TURN)

CLIMB ON TRACK 068°. AT/ABOVE 2250 FEET,

KIKAK ONE KILO DEPARTURE

FOR KIKAK

TRACK 020°, TO INTERCEPT RDL 052 TO KIKAK

LUTMO ONE JULIET DEPARTURE

FOR LUTMO

INTERCEPT RDL 065 TO LUTMO

OROMA ONE JULIET DEPARTURE

FOR OROMA

TURN RIGHT, TRACK 115° INTERCEPT RDL 085 TO OROMA

VERTICAL RESTRICTIONS :

ADHERE TO VERTICAL RESTRICTIONS eg . 2250 = NOT BELOW 2250 FT ON CLIMB UNLESS SPECIFICALLY CANCELLED BY ATC

COMMUNICATION FAILURE :

- SQUAWK 7600
- IF UNDER PILOT NAVIGATION, MAINTAIN LAST ASSIGNED LEVEL FOR 3 MINUTES, IF NO ONWARD CLEARANCE IS RECEIVED, SUBSEQUENTLY CLIMB TO COMPLY WITH SID.
- IF UNDER RADAR VECTORED : MAINTAIN VECTOR FOR 2 MINUTES, IF BELOW MSA, CLIMB TO MSA, THEN TRACK TO INTERCEPT CLEARED OR PREVIOUSLY ASSIGNED SID TO DESTINATION