

# STANDARD DEPARTURE CHART INSTRUMENT (SID) - ICAO

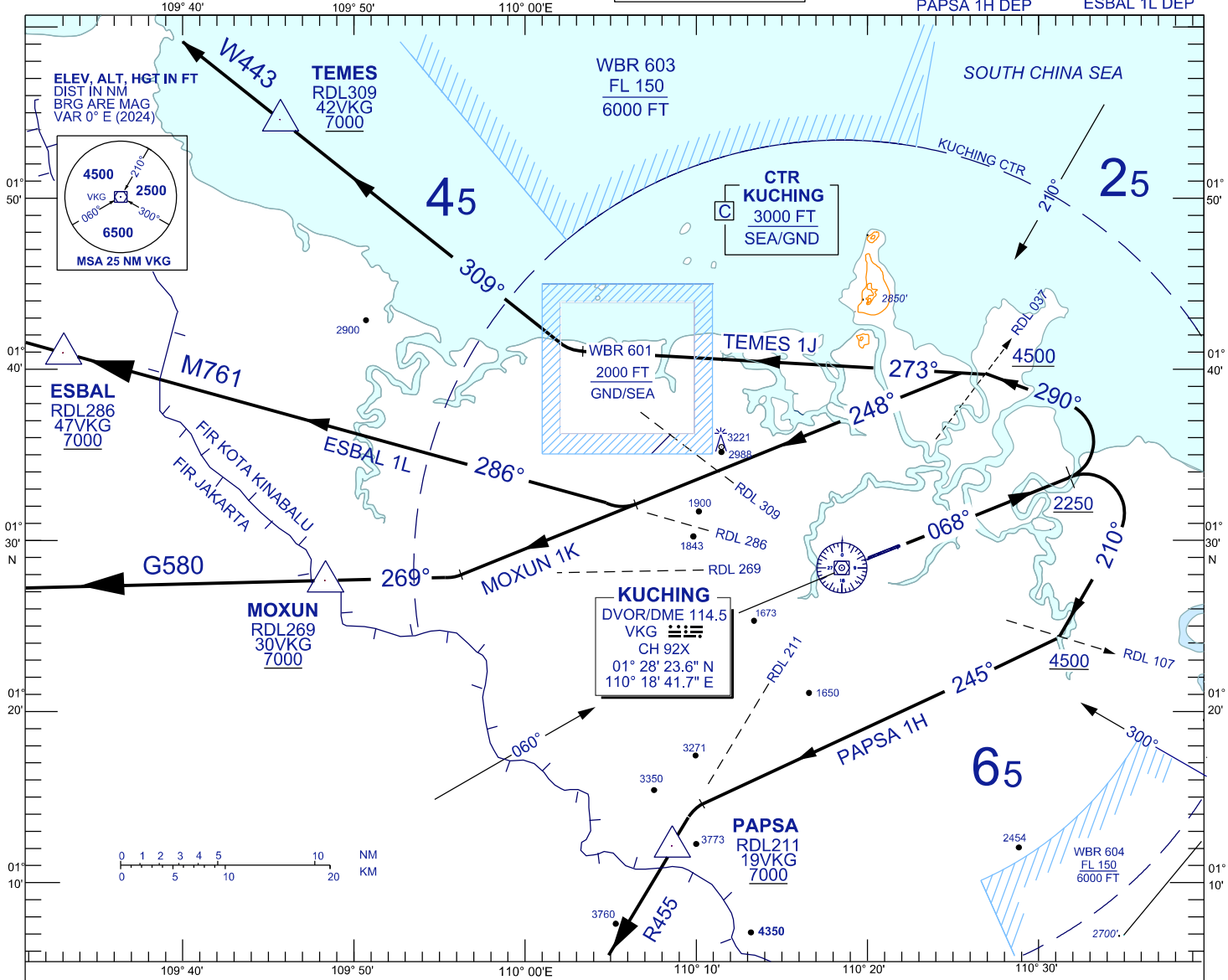
**KUCHING/KUCHING (WBGG) RWY 07**

TRANSITION ALTITUDE  
11,000 FT

TWR	118.1 (P)	SMC	121.9
	121.7 (S)	ATIS	128.4
APP	120.2 (P)	FIS	134.75
	123.85 (S)		
ACC	134.5 (P)		
	125.35 (S)		

BANK ANGLE : 15° ACHIEVED

MOXUN 1K DEP PAPSA 1H DEP TEMES 1J DEP ESBAL 1L DEP



## RWY 07 (RIGHT/ LEFT TURN)

CLIMB ON TRACK 068°. AT/ABOVE 2250 FEET,

### FOR TEMES

TRACK 290°. ON CROSSING RDL 037, TURN LEFT, TRACK 273° TO INTERCEPT RDL 309 TO TEMES

### FOR ESBAL

TRACK 290°. ON CROSSING RDL 037, TURN LEFT TRACK 248° TO INTERCEPT RDL 286 TO ESBAL

### FOR MOXUN

TRACK 290°. ON CROSSING RDL 037, TURN LEFT TRACK 248° TO INTERCEPT RDL 269 TO MOXUN

### FOR PAPSA

TURN RIGHT, TRACK 210°. ON CROSSING RDL 107, TRACK 245° TO INTERCEPT RDL 211 TO PAPSA

## VERTICAL RESTRICTIONS :

ADHERE TO VERTICAL RESTRICTIONS eg . 7000 = NOT BELOW 7000 FT ON CLIMB UNLESS SPECIFICALLY CANCELLED BY ATC

## COMMUNICATION FAILURE :

- SQUAWK 7600
- IF UNDER PILOT NAVIGATION, MAINTAIN LAST ASSIGNED LEVEL FOR 3 MINUTES, IF NO ONWARD CLEARANCE IS RECEIVED, SUBSEQUENTLY CLIMB TO COMPLY WITH SID.
- IF UNDER RADAR VECTORED : MAINTAIN VECTOR FOR 2 MINUTES, IF BELOW MSA, CLIMB TO MSA, THEN TRACK TO INTERCEPT CLEARED OR PREVIOUSLY ASSIGNED SID TO DESTINATION