

**STANDARD DEPARTURE CHART
INSTRUMENT (SID) - ICAO**

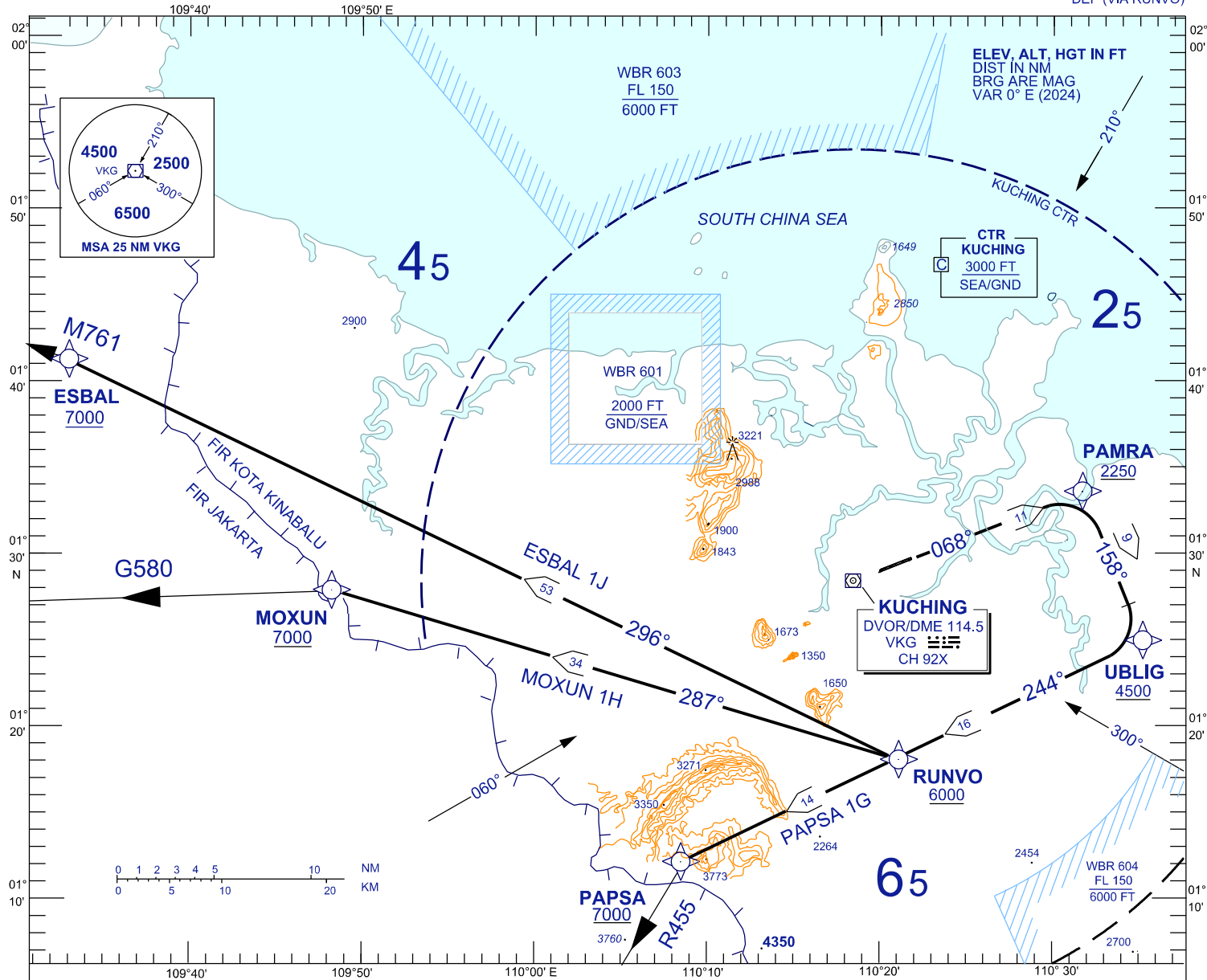
TWR	118.1 (P)	SMC	121.9
APP	120.2 (P)	ATIS	128.4
	123.85 (S)	FIS	134.75
ACC	134.5 (P)		
	125.35 (S)		

**KUCHING/KUCHING (WBGG)
RWY 07 (RNAV)**

PAPSA 1G MOXUN 1H ESBAL 1J
DEP (VIA RUNVO)

BANK ANGLE : 15° ACHEIVED

TRANSITION ALTITUDE
11,000 FT



RWY 07 (RIGHT TURN)

CLIMB ON TRACK TO PAMRA, THEN TURN RIGHT,

PAPSA ONE GOLF DEPARTURE

FOR PAPSA ONE GOLF

TRACK VIA UBLIG, THEN TRACK VIA RUNVO TO PAPSA

MOXUN ONE HOTEL DEPARTURE

FOR MOXUN ONE HOTEL

TRACK VIA UBLIG, THEN TRACK VIA RUNVO TO MOXUN

ESBAL ONE JULIET DEPARTURE

FOR ESBAL ONE JULIET

TRACK VIA UBLIG, THEN TRACK VIA RUNVO TO ESBAL

VERTICAL RESTRICTIONS :

ADHERE TO VERTICAL RESTRICTIONS eg . 7000 = NOT BELOW 7000 FT ON CLIMB UNLESS SPECIFICALLY CANCELLED BY ATC

COMMUNICATION FAILURE :

- SQUAWK 7600
- IF UNDER PILOT NAVIGATION, MAINTAIN LAST ASSIGNED LEVEL FOR 3 MINUTES, IF NO ONWARD CLEARANCE IS RECEIVED, SUBSEQUENTLY CLIMB TO COMPLY WITH SID.
- IF UNDER RADAR VECTORED : MAINTAIN VECTOR FOR 2 MINUTES, IF BELOW MSA, CLIMB TO MSA, THEN TRACK TO INTERCEPT CLEARED OR PREVIOUSLY ASSIGNED SID TO DESTINATION