

**STANDARD DEPARTURE CHART  
INSTRUMENT (SID) - ICAO**

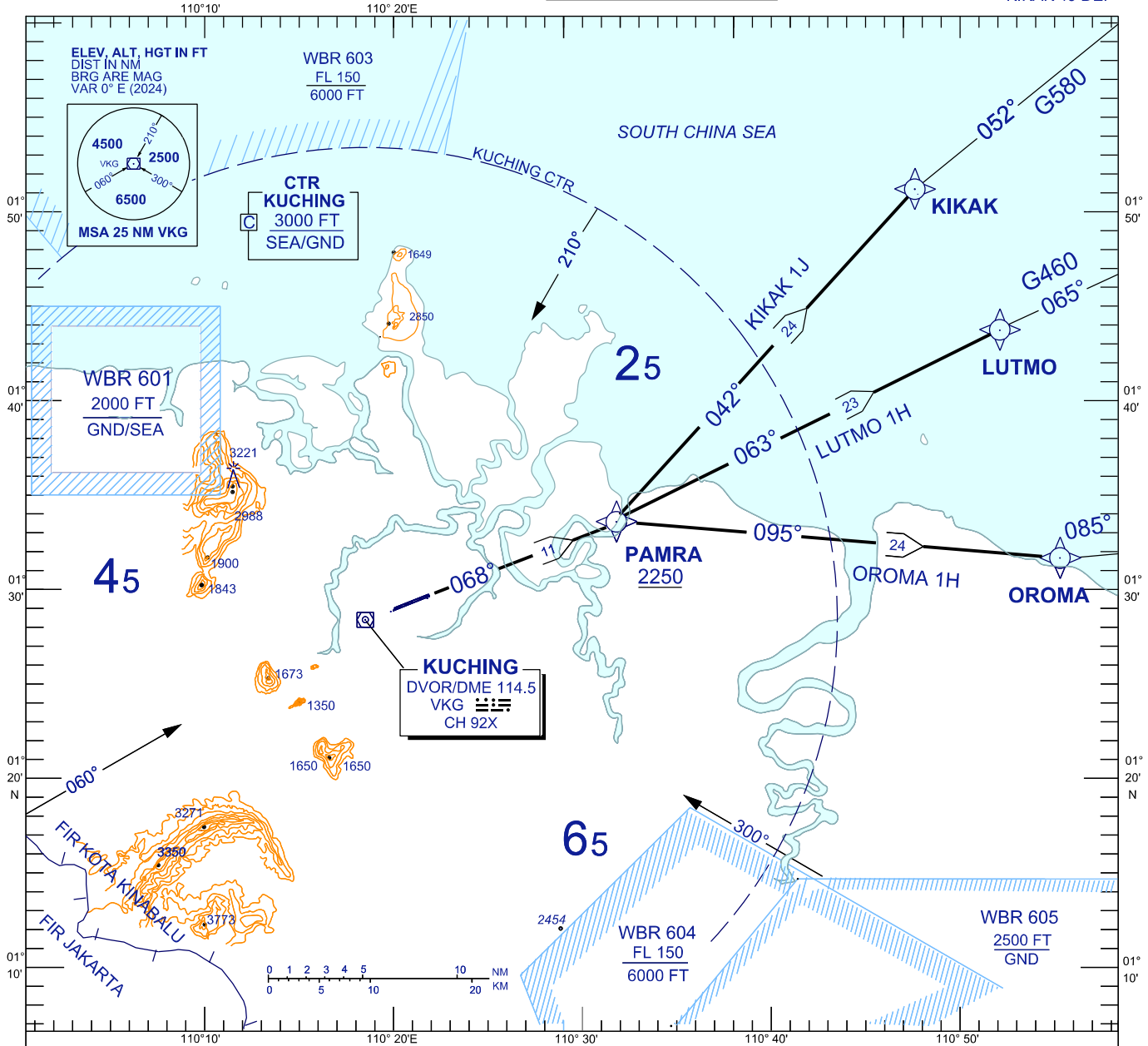
TWR	118.1 (P)	SMC	121.9
	121.7 (S)	ATIS	128.4
APP	120.2 (P)	FIS	134.75
	123.85 (S)		
ACC	134.5 (P)		
	125.35 (S)		

**KUCHING/KUCHING (WBGG)  
RWY 07 ( RNAV )**

OROMA 1H DEP LUTMO 1H DEP  
KIKAK 1J DEP

BANK ANGLE : 15° ACHIEVED

TRANSITION ALTITUDE  
11,000 FT



**RWY 07 (RIGHT / LEFT TURN)**

**KIKAK ONE JULIET DEPARTURE**

CLIMB ON TRACK TO PAMRA,  
**FOR KIKAK**  
TURN LEFT, TRACK TO KIKAK

**LUTMO ONE HOTEL DEPARTURE**

**FOR LUTMO**  
TRACK DIRECT TO LUTMO

**OROMA ONE HOTEL DEPARTURE**

**FOR OROMA**  
TURN RIGHT, TRACK TO OROMA

**VERTICAL RESTRICTIONS :**

ADHERE TO VERTICAL RESTRICTIONS eg . 2250 = NOT BELOW 2250 FT ON CLIMB UNLESS SPECIFICALLY CANCELLED BY ATC

**COMMUNICATION FAILURE :**

- SQUAWK 7600
- IF UNDER PILOT NAVIGATION, MAINTAIN LAST ASSIGNED LEVEL FOR 3 MINUTES, IF NO ONWARD CLEARANCE IS RECEIVED, SUBSEQUENTLY CLIMB TO COMPLY WITH SID.
- IF UNDER RADAR VECTORING : MAINTAIN VECTOR FOR 2 MINUTES, IF BELOW MSA, CLIMB TO MSA, THEN TRACK TO INTERCEPT CLEARED OR PREVIOUSLY ASSIGNED SID TO DESTINATION