

**STANDARD DEPARTURE CHART
INSTRUMENT (SID) - ICAO**

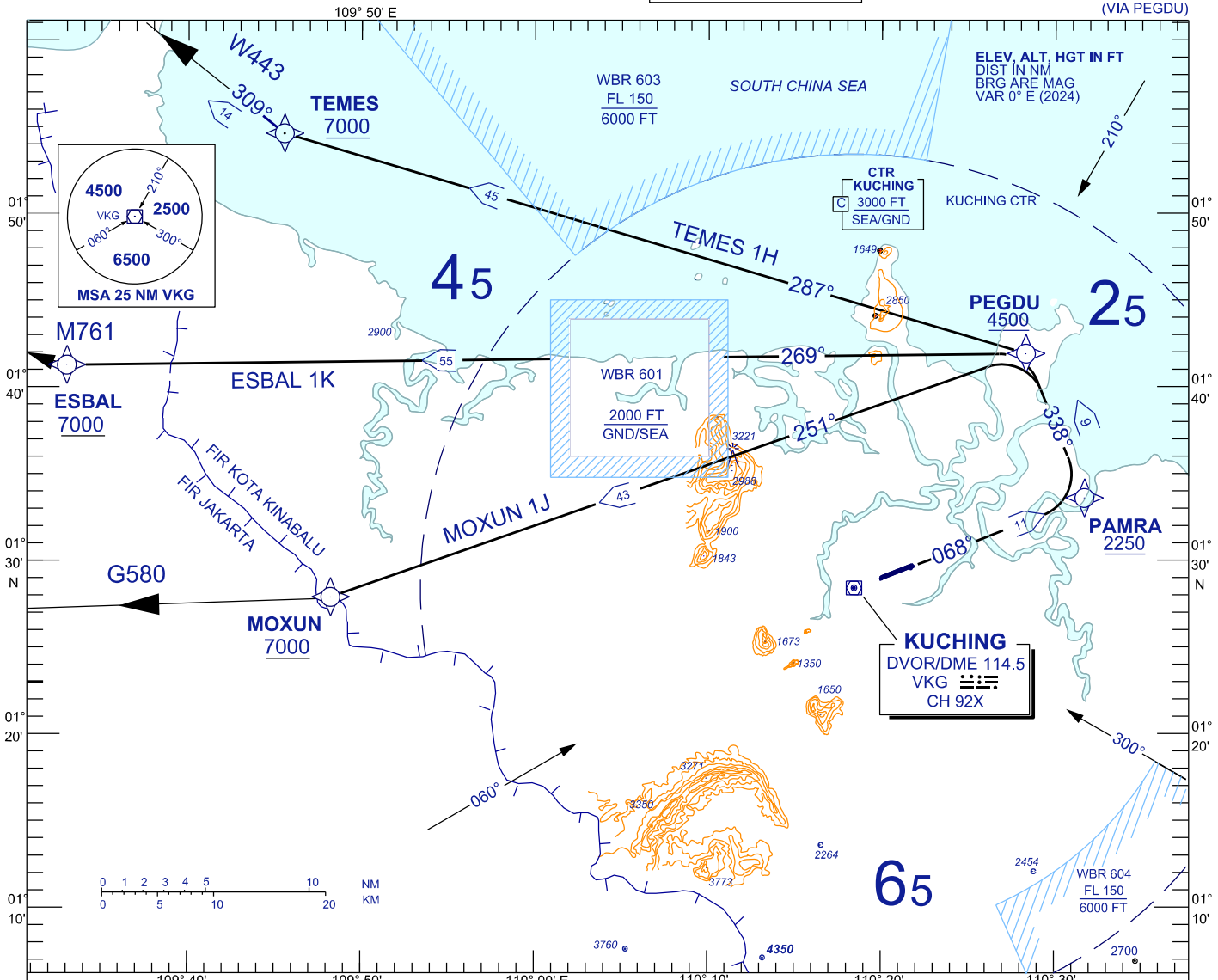
TRANSITION ALTITUDE
11,000 FT

BANK ANGLE : 15° ACHIEVED

TWR	118.1 (P)	SMC	121.9
	121.7 (S)	ATIS	128.4
APP	120.2 (P)	FIS	134.75
	123.85 (S)		
ACC	134.5(P)		
	125.35 (S)		

**KUCHING/KUCHING (WBGG)
RWY 07 (RNAV)**

ESBAL 1K DEP MOXUN 1J DEP
TEMES 1H DEP
(VIA PEGDU)



RWY 07 (LEFT TURN)

CLIMB ON TRACK TO PAMRA, THEN TURN LEFT

TEMES ONE HOTEL DEPARTURE

FOR TEMES ONE HOTEL

ESBAL ONE KILO DEPARTURE

TRACK TO PEGDU, THEN TRACK TO TEMES

FOR ESBAL ONE KILO

TRACK TO PEGDU, THEN TRACK TO ESBAL

MOXUN ONE JULIET DEPARTURE

FOR MOXUN ONE JULIET

TRACK TO PEGDU, THEN TRACK TO MOXUN

VERTICAL RESTRICTIONS :

ADHERE TO VERTICAL RESTRICTIONS eg . 7000 = NOT BELOW 7000 FT ON CLIMB UNLESS SPECIFICALLY CANCELLED BY ATC

COMMUNICATION FAILURE :

- SQUAWK 7600
- IF UNDER PILOT NAVIGATION, MAINTAIN LAST ASSIGNED LEVEL FOR 3 MINUTES, IF NO ONWARD CLEARANCE IS RECEIVED, SUBSEQUENTLY CLIMB TO COMPLY WITH SID.
- IF UNDER RADAR VECTORED : MAINTAIN VECTOR FOR 2 MINUTES, IF BELOW MSA, CLIMB TO MSA, THEN TRACK TO INTERCEPT CLEARED OR PREVIOUSLY ASSIGNED SID TO DESTINATION