

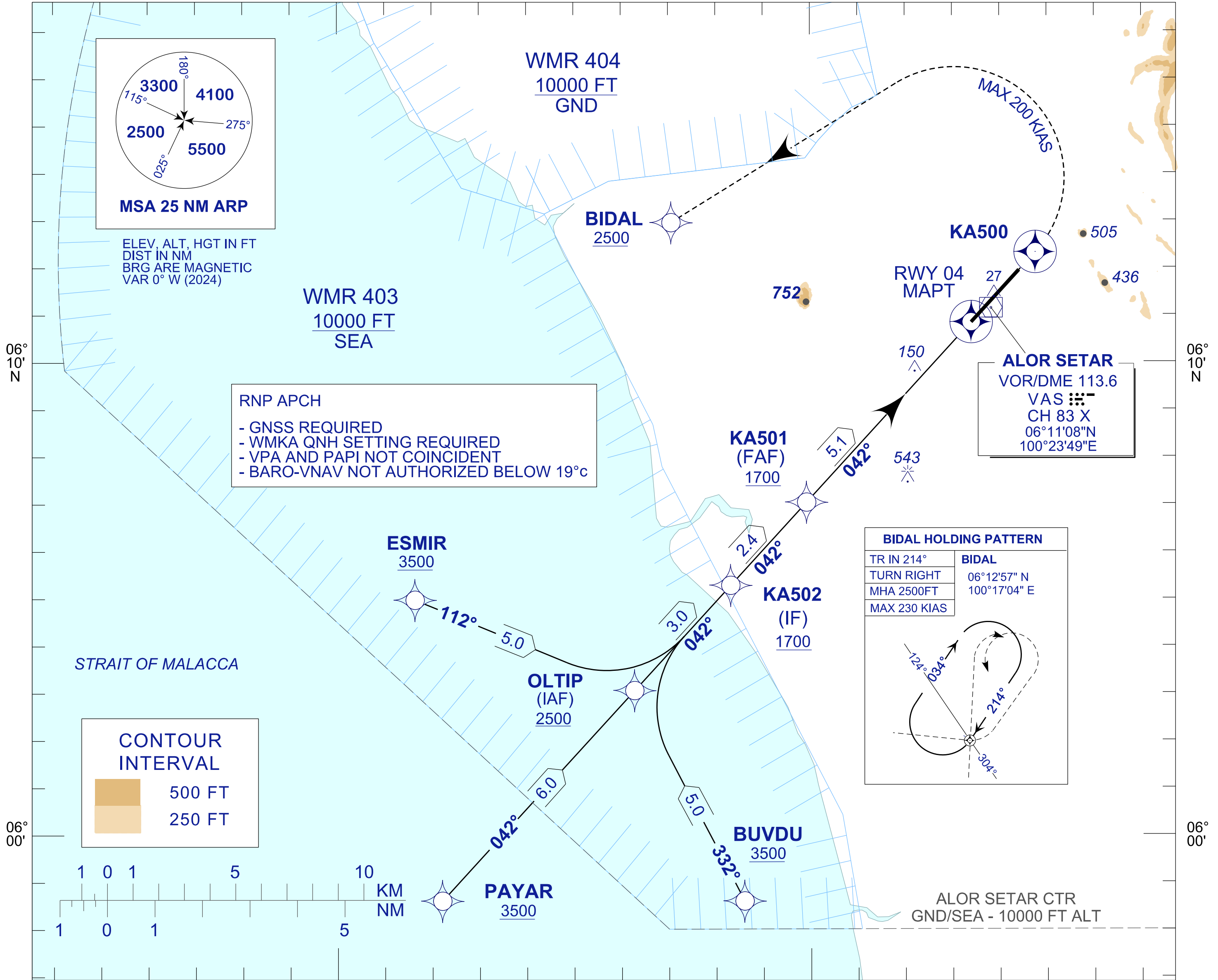
**INSTRUMENT
APPROACH
CHART - ICAO**

AERODROME ELEV 14 FT
HEIGHT RELATED TO
THR RWY 04 - ELEV 12 FT

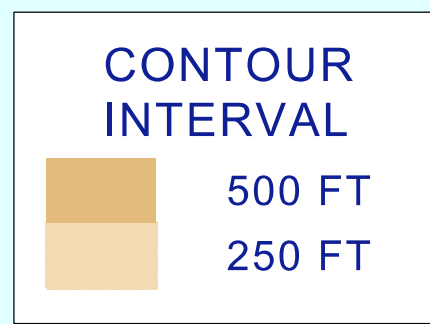
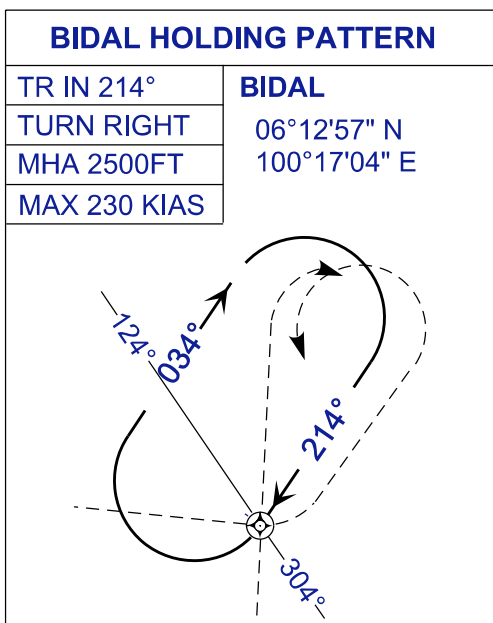
| | |
|---------|--------|
| TWR/APP | 122.3 |
| | 121.5 |
| | 258.2 |
| SMC | 121.6 |
| ATIS | 128.65 |

**ALOR SETAR/
SULTAN ABDUL HALIM (WMKA)**

RNP Y RWY 04



RNP APCH
- GNSS REQUIRED
- WMKA QNH SETTING REQUIRED
- VPA AND PAPI NOT COINCIDENT
- BARO-VNAV NOT AUTHORIZED BELOW 19°C



MISSED APPROACH

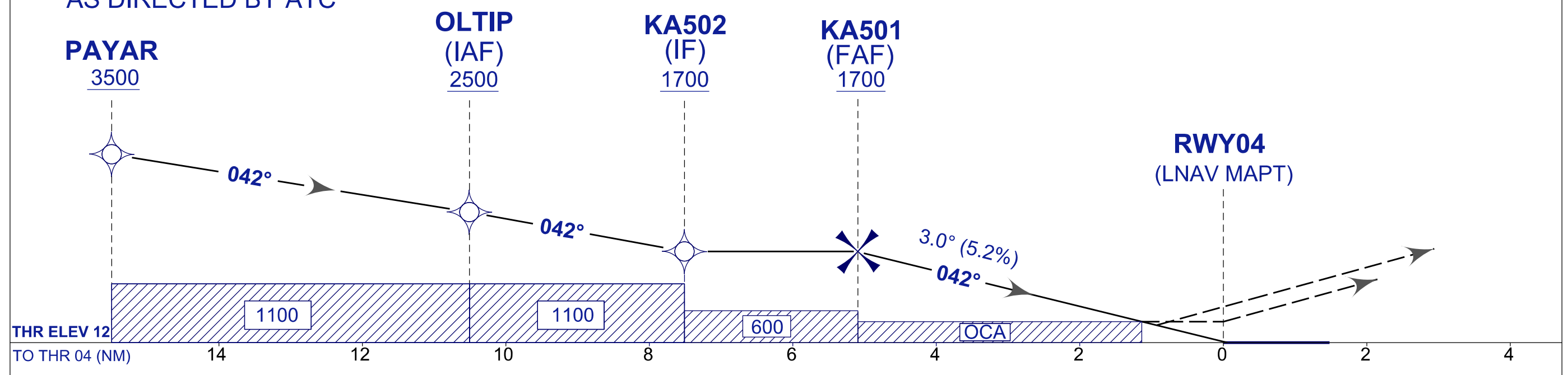
CLIMB ON TR 042° TO 2500 FT. ON PASSING KA500
TURN LEFT DIRECT TO BIDAL AND HOLD OR
AS DIRECTED BY ATC

CAUTION

MISSED APPROACH TURNED SPEED
MAX 200 KIAS

TRANSITION ALT 11000

RDH 50 FT



| | | | | |
|-------------|------------------|------------------|------------------|------------------|
| OCA (OCH) | A | B | C | D |
| LNAV | 400 (388) | | | |
| LNAV / VNAV | 337 (325) | 349 (337) | 368 (356) | 392 (380) |

| | | | | | | | |
|-----------------|----|------|------|------|-----|-----|-----|
| DIST THR/RWY 04 | NM | 5.1 | 5.0 | 4.0 | 3.0 | 2.0 | 1.0 |
| ALTITUDE | FT | 1700 | 1655 | 1251 | 954 | 657 | 360 |

| | | | | | | | |
|-------------------------------|---------|------|------|------|------|------|------|
| GS | KT | 80 | 100 | 120 | 140 | 160 | 180 |
| FAF - RWY04 (5.1NM) | MIN:SEC | 3:52 | 3:06 | 2:35 | 2:13 | 1:56 | 1:43 |
| RATE OF DESCEND (318.4 FT/NM) | FT/MIN | 420 | 530 | 630 | 740 | 840 | 950 |

OBSTACLE UPDATE, OCA (OCH) FOR LNAV/VNAV