

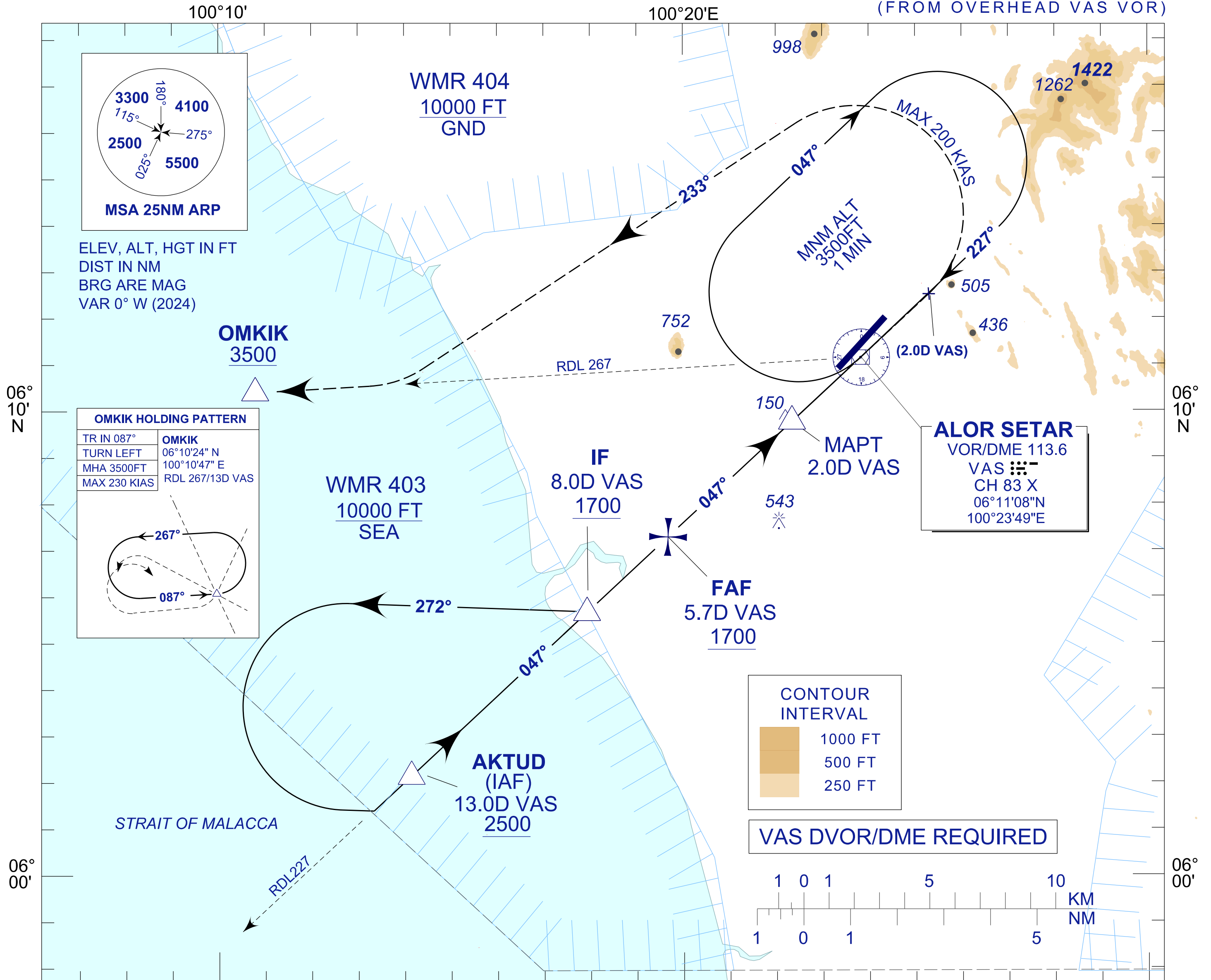
**INSTRUMENT
APPROACH
CHART - ICAO**

AERODROME ELEV 14 FT
HEIGHTS RELATED TO
THR RWY 04 - ELEV 12 FT

TWR/APP 122.3
121.5
258.2
SMC 121.6
ATIS 128.65

**ALOR SETAR/
SULTAN ABDUL HALIM (WMKA)
VOR Y RWY 04**

(FROM OVERHEAD VAS VOR)



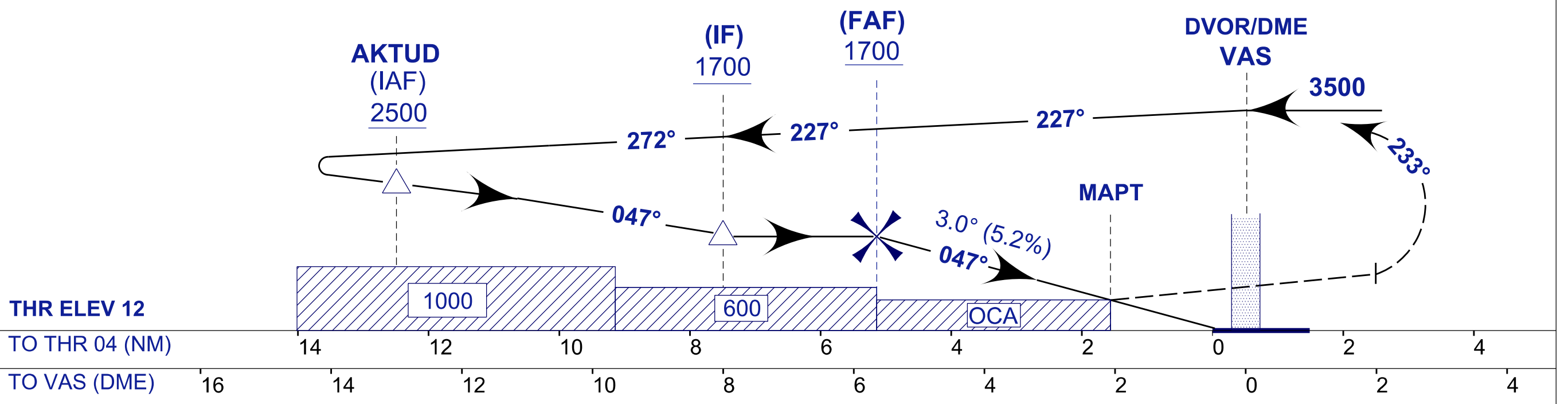
MISSED APPROACH

CLIMB ON TR 047° TO 3500 FT. ON PASSING 2.0 DME VAS
TURN LEFT TR 233° TO INTERCEPT RDL 267 VAS
TO OMKIK HOLD OR AS DIRECTED BY ATC

CAUTION

MISSED APPROACH TURNED SPEED
MAX 200 KIAS

TRANSITION ALT 11000
USE QNH



| | | | | |
|-----------|----------|---|---|---|
| OCA (OCH) | A | B | C | D |
| VOR/DME | 630(618) | | | |

| | | | | | | |
|-----------------|----|------|------|------|-----|-----|
| DME VAS | NM | 5.7 | 5.0 | 4.0 | 3.0 | 2.0 |
| DIST THR/RWY 04 | NM | 5.1 | 4.5 | 3.5 | 2.5 | 1.5 |
| ALTITUDE | FT | 1700 | 1496 | 1178 | 859 | 540 |

| | | | | | | | |
|-------------------------------|---------|------|------|------|------|------|------|
| GS | KT | 80 | 100 | 120 | 140 | 160 | 180 |
| FAF - RWY04 (5.1NM) | MIN:SEC | 3:52 | 3:06 | 2:35 | 2:13 | 1:56 | 1:43 |
| RATE OF DESCEND (318.6 FT/NM) | FT/MIN | 420 | 530 | 630 | 740 | 840 | 950 |