

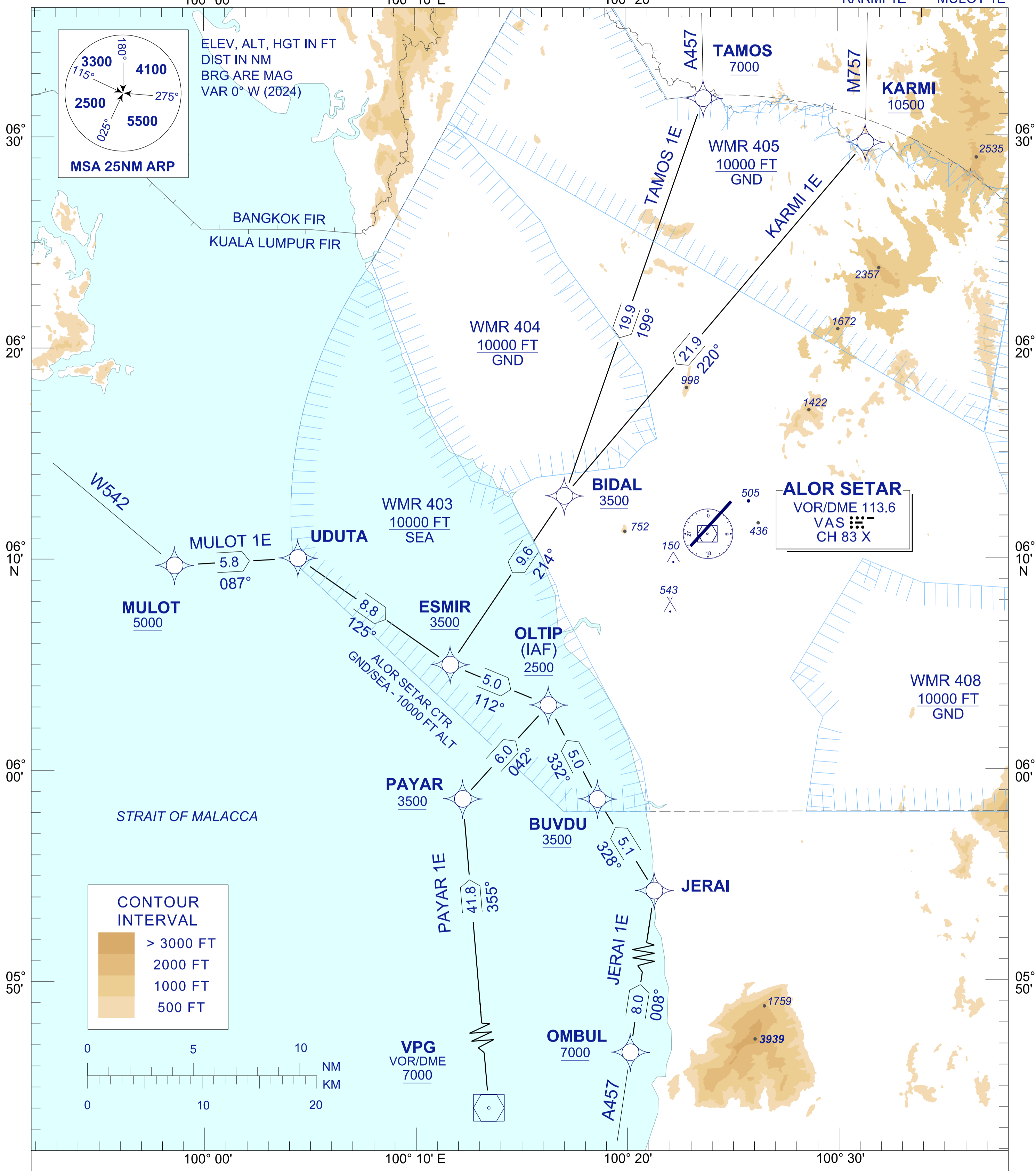
STANDARD ARRIVAL CHART INSTRUMENT (STAR) - ICAO

TRANSITION ALTITUDE
11000 FT

TWR/APP	122.3, 258.2
	121.5
TRAINING	129.1
SMC	121.6
ATIS	128.65

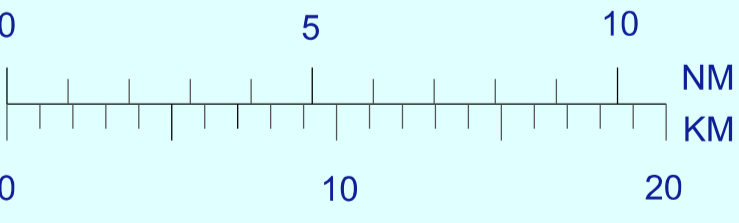
ALOR SETAR/ SULTAN ABDUL HALIM (WMKA) RNAV (GNSS) RWY 04

PAYAR 1E JERAI 1E TAMOS 1E
MULOT 1E KARMI 1E



CONTOUR INTERVAL

[Dark Brown]	> 3000 FT
[Medium Brown]	2000 FT
[Light Brown]	1000 FT
[Orange]	500 FT



COMMUNICATION FAILURE :

- SQUAWK 7600
- IF UNDER PILOT NAVIGATION, MAINTAIN LAST ASSIGNED LEVEL FOR 3 MINUTES, IF NO ONWARD CLEARANCE IS RECEIVED. SUBSEQUENTLY CLIMB/DESCEND TO COMPLY WITH STAR AND LAND.
- IF UNDER RADAR VECTORING : MAINTAIN VECTOR FOR 1 MINUTES, IF BELOW MSA, CLIMB TO MSA, THEN TRACK TO INTERCEPT CLEARED OR PREVIOUSLY ASSIGNED STAR AND LAND.

OBSTACLE UPDATE