

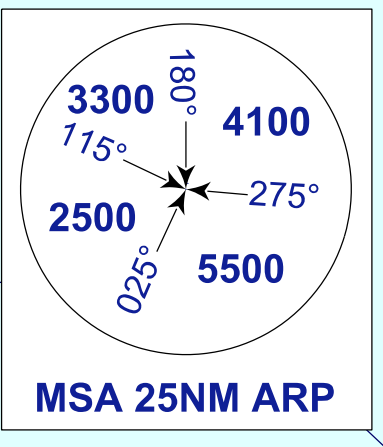
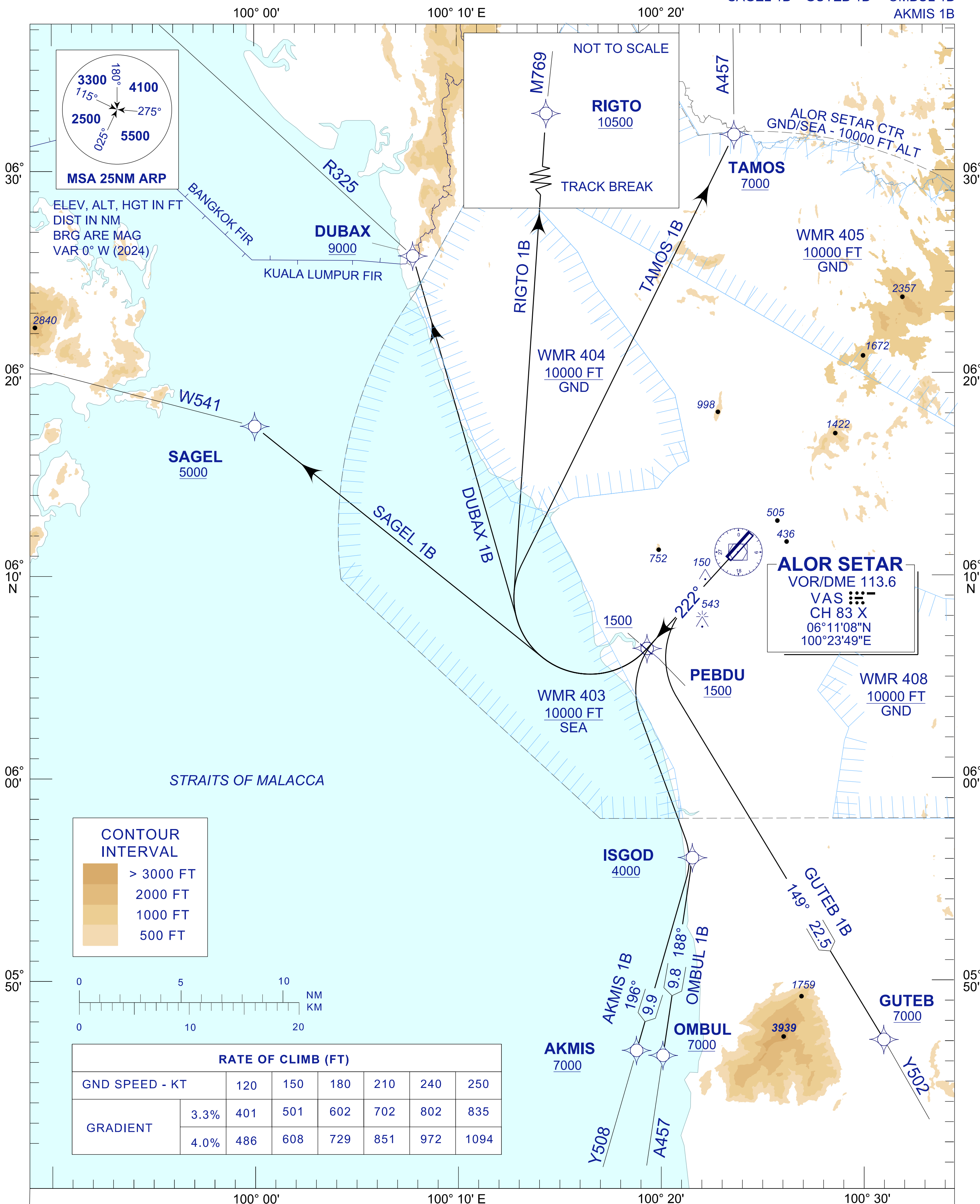
STANDARD DEPARTURE CHART INSTRUMENT (SID) - ICAO

TRANSITION ALTITUDE
11000 FT

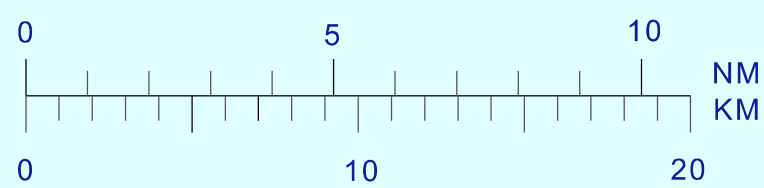
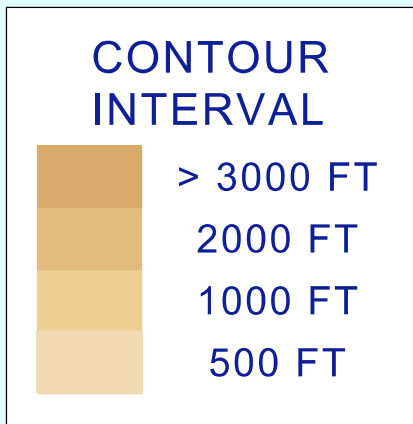
TWR/APP 122.3, 258.2
121.5
TRAINING 129.1
SMC 121.6
ATIS 128.65

ALOR SETAR/ SULTAN ABDUL HALIM (WMKA) RNAV (GNSS) RWY22

TAMOS 1B RIGTO 1B DUBAX 1B
SAGEL 1B GUTEB 1B OMBUL 1B
AKMIS 1B



ELEV, ALT, HGT IN FT
DIST IN NM
BRG ARE MAG
VAR 0° W (2024)



RATE OF CLIMB (FT)							
GND SPEED - KT		120	150	180	210	240	250
GRADIENT	3.3%	401	501	602	702	802	835
	4.0%	486	608	729	851	972	1094

COMMUNICATION FAILURE :

- SQUAWK 7600
- IF UNDER PILOT NAVIGATION, MAINTAIN LAST ASSIGNED LEVEL FOR 3 MINUTES, IF NO ONWARD CLEARANCE IS RECEIVED. SUBSEQUENTLY CLIMB TO COMPLY WITH SID.
- IF UNDER RADAR VECTORED : MAINTAIN VECTOR FOR 2 MINUTES, IF BELOW MSA, CLIMB TO MSA, THEN TRACK TO INTERCEPT CLEARED OR PREVIOUSLY ASSIGNED SID TO DESTINATION.