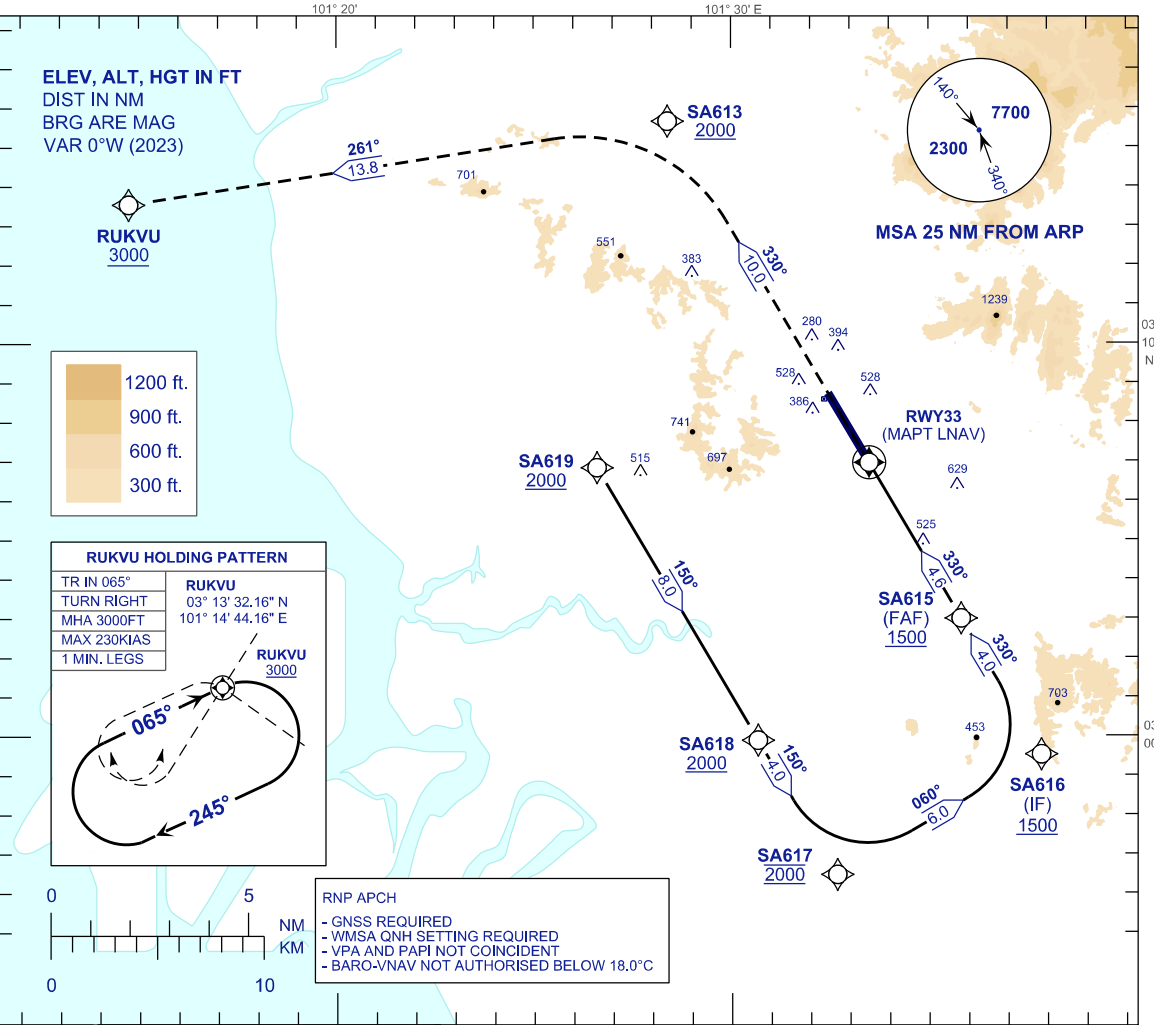


**INSTRUMENT
APPROACH
CHART - ICAO**

AERODROME ELEV 89FT
HEIGHT RELATED TO
THR RWY 33 - ELEV 89FT

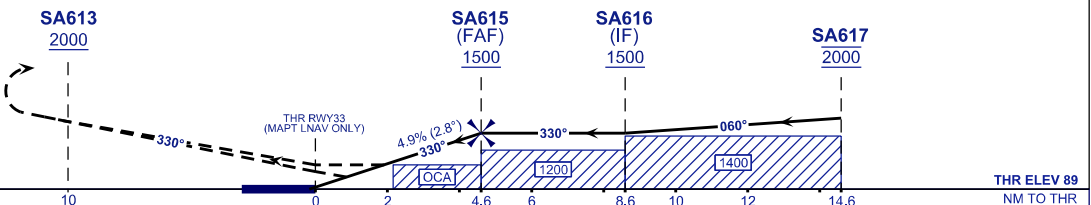
APP	118.65	ACD	120.45
	124.20	SMC	121.90
	135.25	TWR	118.20
FIS	126.10	ATIS	127.60

**SUBANG/SULTAN ABDUL
AZIZ SHAH (WMSA)
RNP Y RWY 33**



MISSED APPROACH:

CLIMB TO 3000FT OR ABOVE ON TR 330°, CROSS SA613 AT 2000FT OR ABOVE, THEN TURN LEFT TO RUKVU AND HOLD, OR AS DIRECTED BY ATC.



OCA (OCH)		A	B	C	D
STRAIGHT IN APPROACH	LNAV	780 (691)			
	LNAV/VNAV	522 (433)			

ALTITUDE /HEIGHT ON FINAL APPROACH					
DIST THR RWY33 (NM)	4.6	4.0	3.0	2.0	1.0
ALTITUDE (FT)	1500	1328	1031	733	436

GROUND SPEED (KT)	80	100	120	140	160	180
FAR33 - THR33(4.6NM) (MIN:SEC)	3:26	2:45	2:17	1:58	1:43	1:32
RATE OF DESCEND (4.9%) (FT/MIN)	400	500	590	690	790	890

CHANGES : IN PROFILE VIEW, OCA/OCH VALUE,
ESTABLISH WPT SA616, SA617, SA618 & SA619 IN ARRIVAL SEGMENT,
REMOVAL WPT SA614.