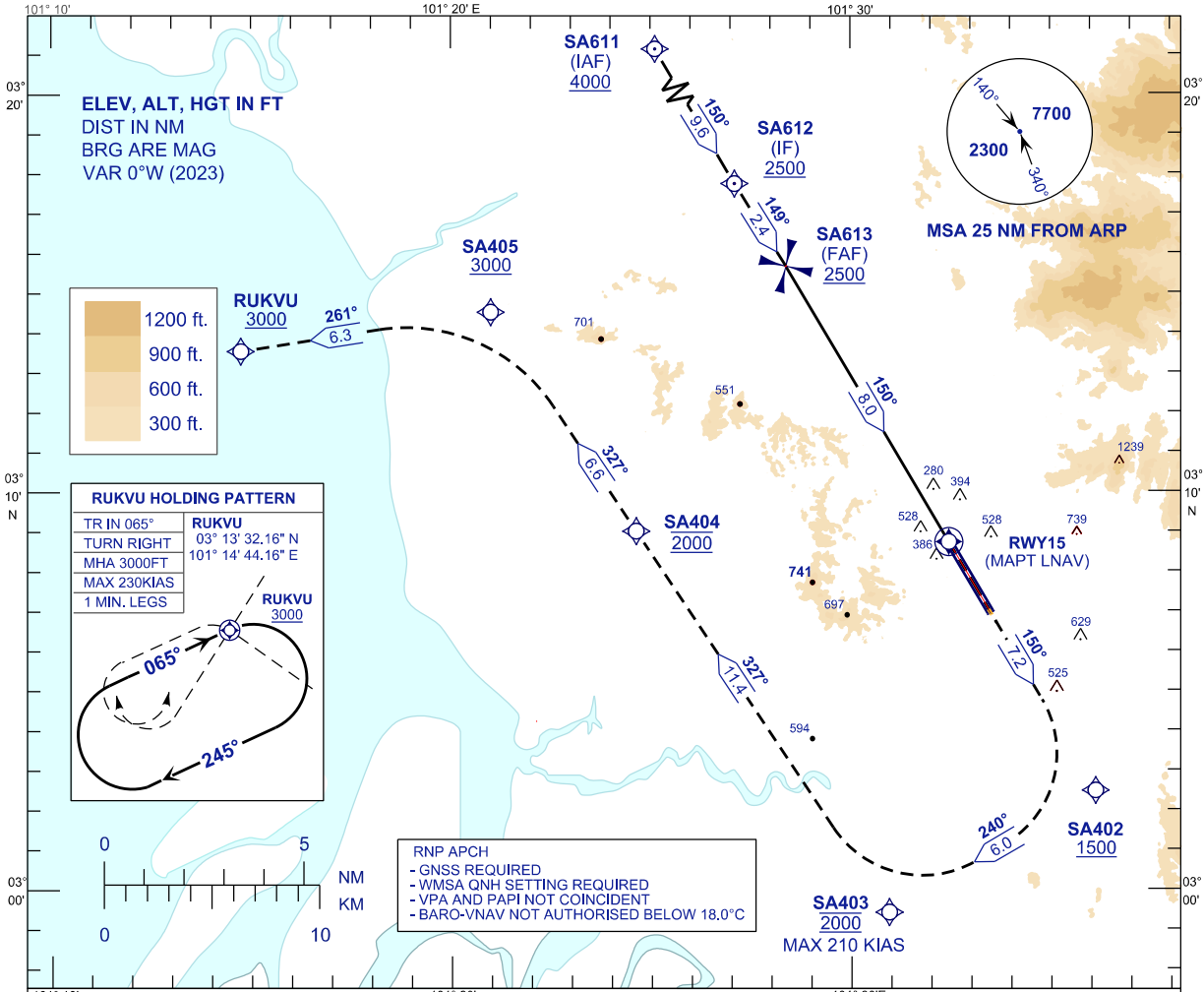


**INSTRUMENT
APPROACH
CHART - ICAO**

AERODROME ELEV 89FT
HEIGHT RELATED TO
THR RWY 15 - ELEV 71FT

APP	118.65	ACD	120.45
	124.20	SMC	121.90
	135.25	TWR	118.20
FIS	126.10	ATIS	127.60

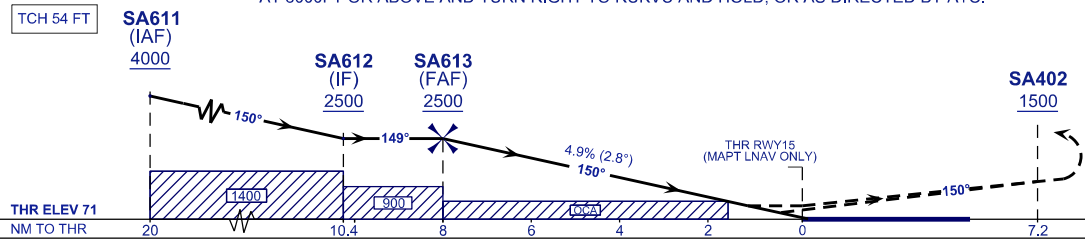
**SUBANG/SULTAN ABDUL
AZIZ SHAH (WMSA)
RNP Y RWY 15**



TRANSITION LEVEL FL 130
TRANSITION ALT 11,000 FT

TCH 54 FT

MISSED APPROACH:
CLIMB TO 3000FT OR ABOVE ON TR 150°. CROSS SA402 AT 1500FT OR ABOVE THEN TURN RIGHT TO SA403 AT 2000FT AND MAXIMUM TURN SPEED 210KIAS, TO SA404 AT 2000FT THEN TO SA405 AT 3000FT OR ABOVE AND TURN RIGHT TO RUKVU AND HOLD, OR AS DIRECTED BY ATC.



OCA (H)		A	B	C	D
STRAIGHT IN APPROACH	LNAV	780 (709)			
	LNAV/VNAV	670 (599)			

ALTITUDE /HEIGHT ON FINAL APPROACH								
DIST THR RWY15 (NM)	8.0	7.0	6.0	5.0	4.0	3.0	2.0	1.0
ALTITUDE (FT)	2500	2214	1917	1620	1323	1026	719	422
GROUND SPEED (KT)	80	100	120	140	160	180		
SA613 - THR15(8.0NM) (MIN:SEC)	6:00	4:48	4:00	3:26	3:00	2:40		
RATE OF DESCEND (4.9%) (FT/MIN)	400	500	590	690	790	890		

CHANGES : IN PROFILE VIEW, CHANGE LNAV AND LNAV/VNAV VALUE,
ADD SA611 WPT (IAF) IN APPROACH SEGMENT,
COORDINATE UPDATE - WPT SA612.