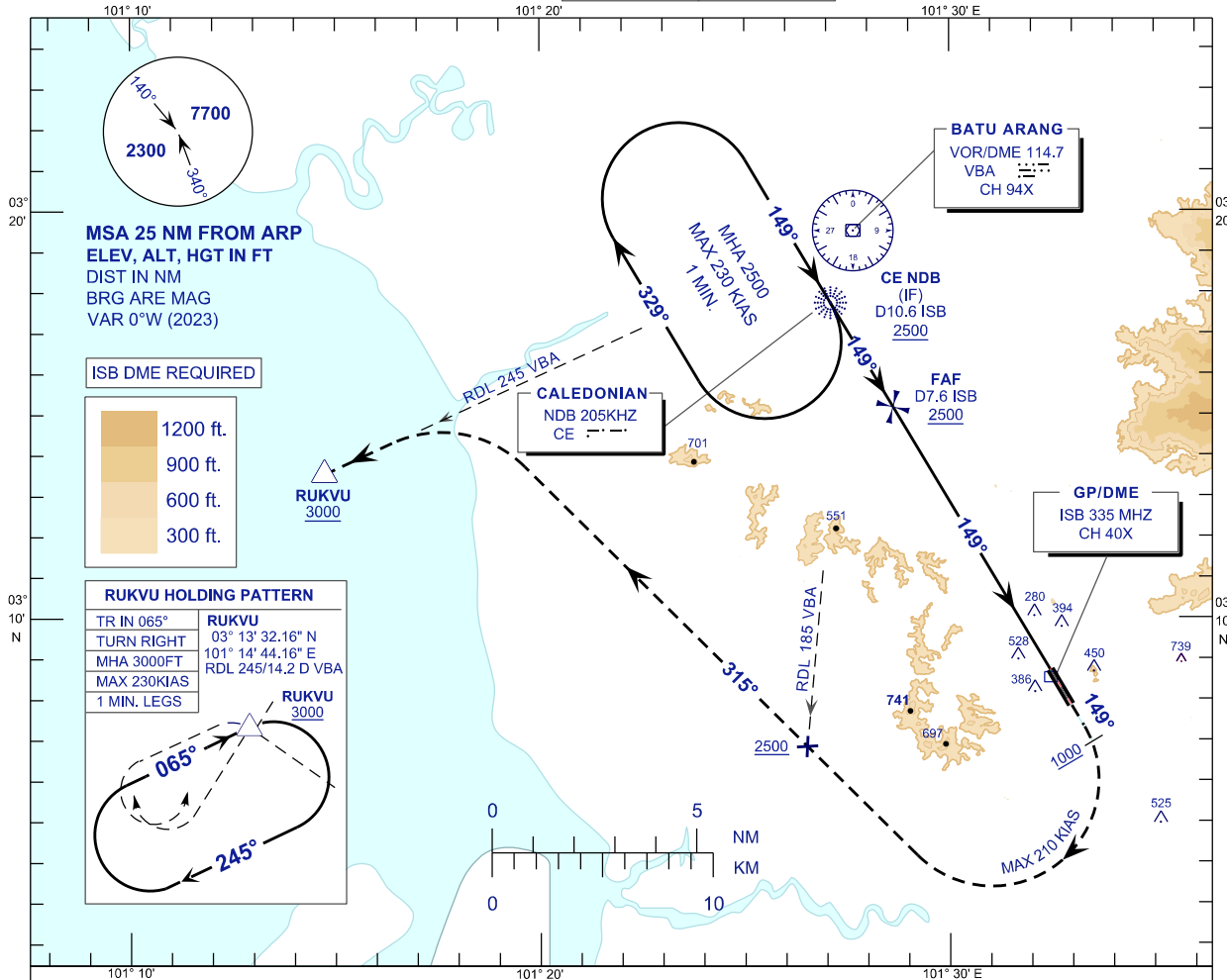


**INSTRUMENT  
APPROACH  
CHART - ICAO**

**AERODROME ELEV 89FT**  
HEIGHT RELATED TO  
THR RWY 15 - ELEV 71FT

APP 118.65	ACD 120.45
124.20	SMC 121.90
135.25	TWR 118.20
FIS 126.10	ATIS 127.60

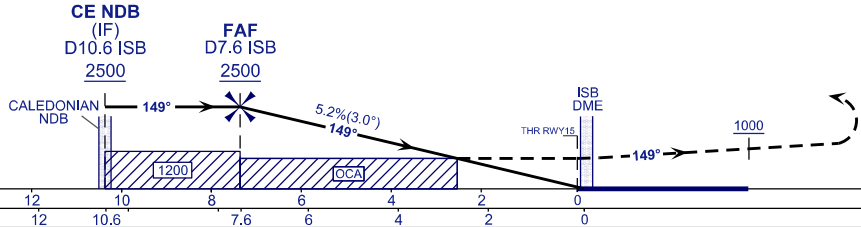
**SUBANG/SULTAN ABDUL  
AZIZ SHAH (WMSA)  
NDB RWY 15**



TRANSITION LEVEL FL 130  
TRANSITION ALT 11,000 FT

**MISSED APPROACH:**  
CLIMB TO 3000FT OR ABOVE ON TR 149°, ON PASSING 1000FT TURN RIGHT TR 315° TO INTERCEPT RADIAL 245° VBA VOR/DME TO RUKVU AND HOLD, OR AS DIRECTED BY ATC.

**CAUTION:**  
MISSED APPROACH TURN SPEED MAXIMUM 210KIAS, TO CROSS RADIAL 185° VBA VOR/DME AT 2500FT OR ABOVE.



OCA (H)	A	B	C	D
STRAIGHT IN APPROACH	910 (839)			

DME ISB (NM)	7.6	7.2	6.2	5.2	4.2	3.2	2.2	1.2
DIST THR RWY15 (NM)	7.5	7.0	6.0	5.0	4.0	3.0	2.0	1.0
ALTITUDE (FT)	2500	2350	2031	1713	1394	1076	758	439

GROUND SPEED (KT)	80	100	120	140	160	180
FAF - RWY15 (7.5NM) (MIN:SEC)	5:36	4:29	3:44	3:12	2:48	2:29
RATE OF DESCEND (5.2%) (FT/MIN)	420	530	640	740	850	960

CHANGES : OCA/OCH VALUE & OBSTACLES UPDATE  
COORDINATE UPDATE - VBA VOR/DME, CE NDB & ISB GP/DME