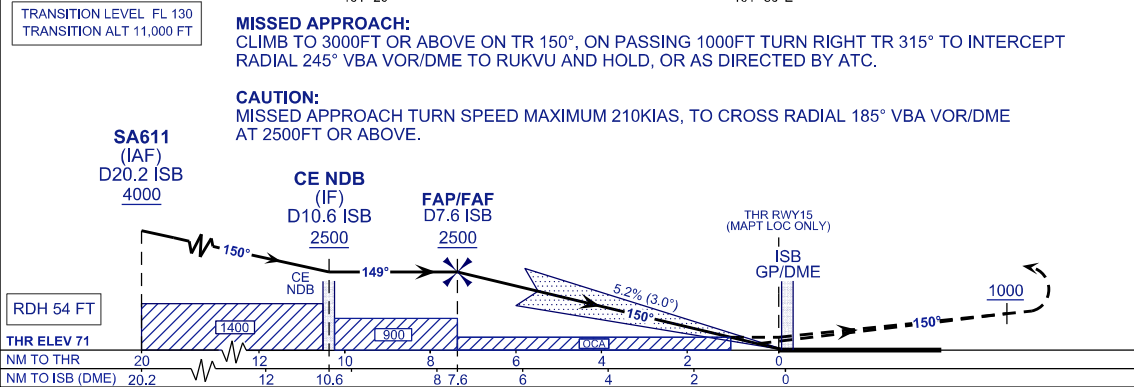
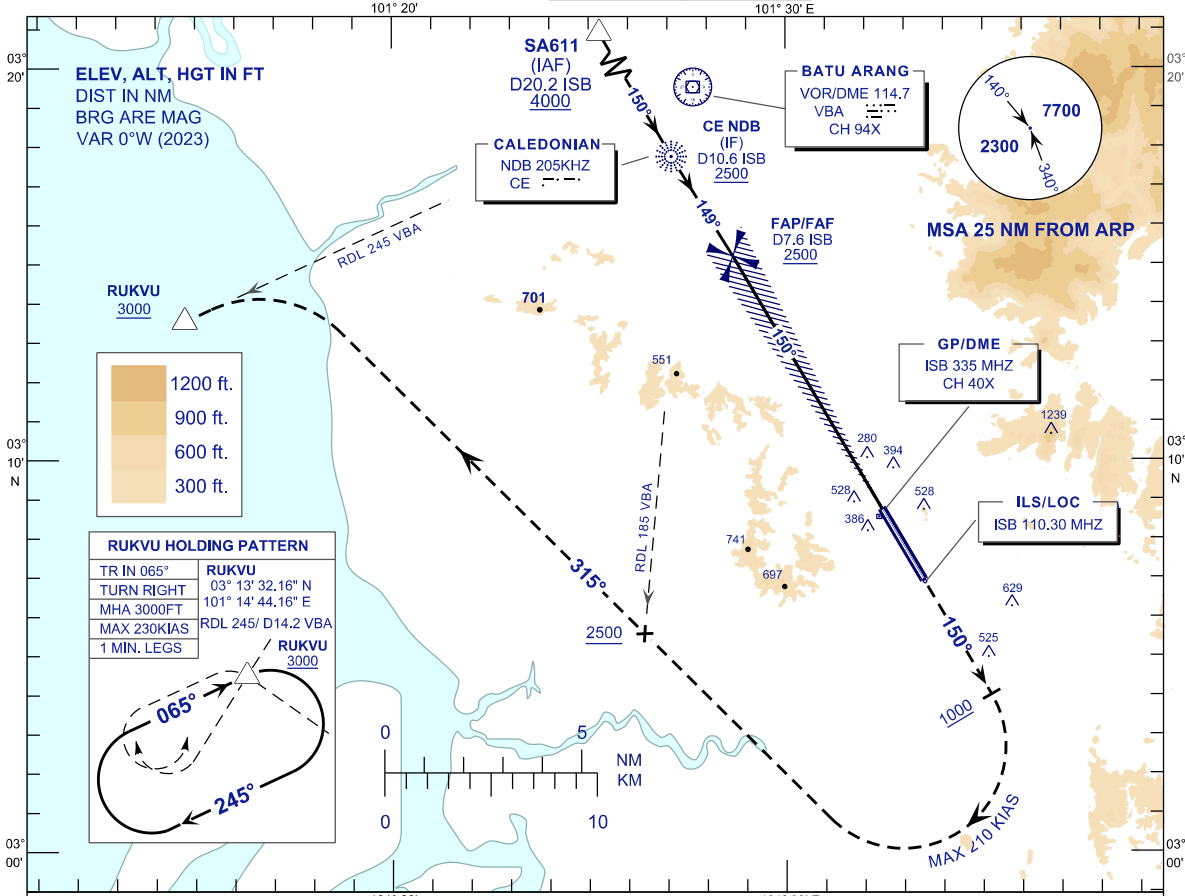


**INSTRUMENT
APPROACH
CHART - ICAO**

AERODROME ELEV 89FT
HEIGHT RELATED TO
THR RWY 15 - ELEV 71FT

APP	118.65	ACD	120.45
	124.20	SMC	121.90
	135.25	TWR	118.20
FIS	126.10	ATIS	127.60

**SUBANG/SULTAN ABDUL
AZIZ SHAH (WMSA)
ILS OR LOC RWY 15**



DME ISB (NM)	7.6	7.2	6.2	5.2	4.2	3.2	2.2	1.2
DIST THR RWY15 (NM)	7.5	7.0	6.0	5.0	4.0	3.0	2.0	1.0
ALTITUDE (FT)	2500	2352	2033	1715	1396	1078	759	441

OCA (H)	A	B	C	D
ILS/DME CAT I	350 (279)			
LOC/DME (GP INOP)	780 (709)			

GROUND SPEED (KT)	80	100	120	140	160	180
FAF - RWY15 (7.5NM) (MIN:SEC)	5:36	4:29	3:44	3:12	2:48	2:29
RATE OF DESCEND (5.2%) (FT/MIN)	420	530	640	740	850	960

CHANGES : IN PROFILE VIEW, REVISE OCA(H) VALUE,
ADD WPT SA611 (IAF) IN APPROACH SEGMENT,
COORDINATE UPDATE - CE NDB, ILS ILS/LOC, ISB GP/DME & VBA.