

**STANDARD DEPARTURE CHART
INSTRUMENT (SID) - ICAO**

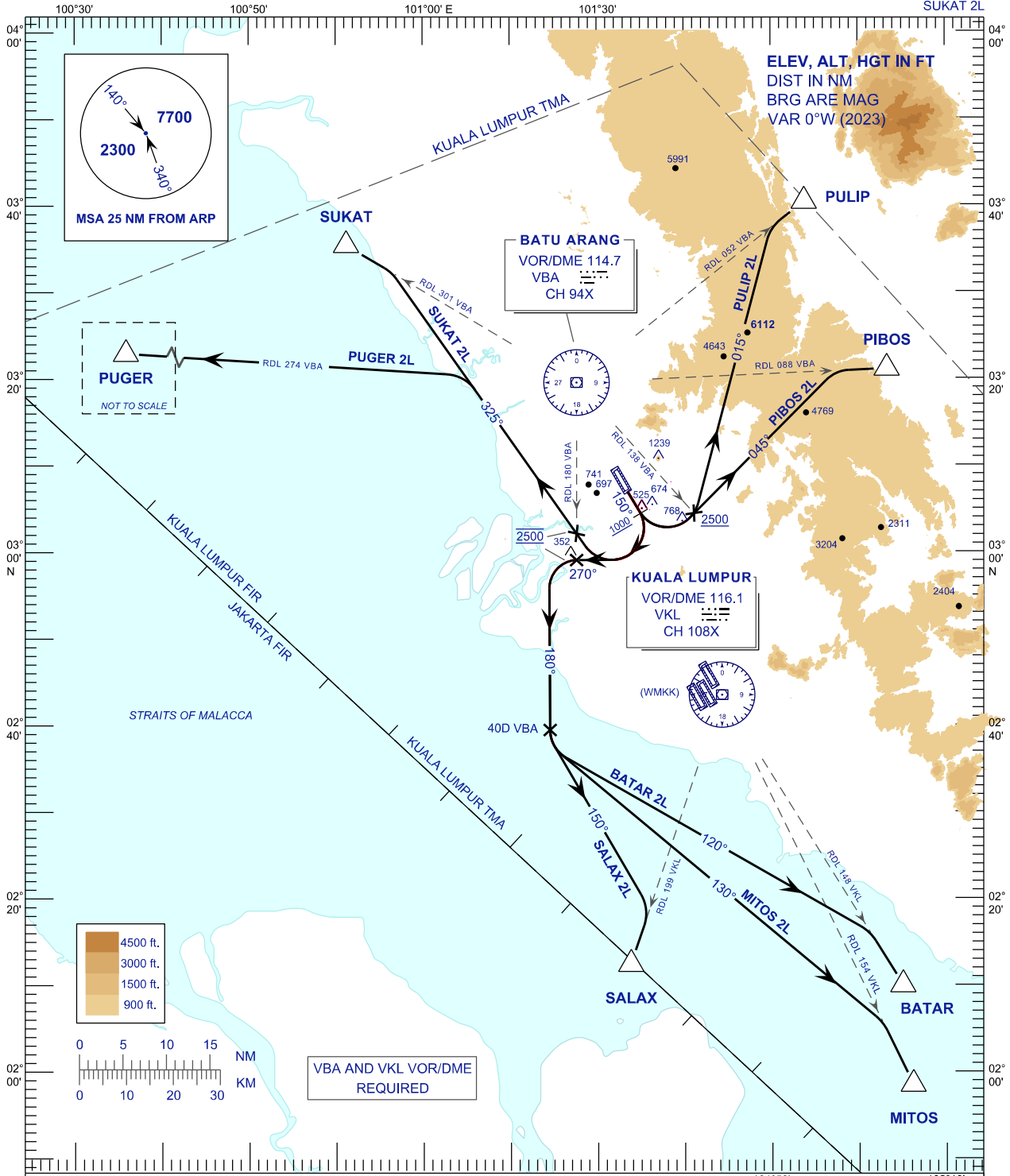
TRANSITION ALTITUDE
11000FT

APP	118.65	ACD	120.45
	124.20	SMC	121.90
	135.25	TWR	118.20
FIS	126.10	ATIS	127.60

**SUBANG/SULTAN ABDUL
AZIZ SHAH (WMSA)
RWY 15**

PULIP 2L PIBOS 2L BATAR 2L
MITOS 2L SALAX 2L PUGER 2L
SUKAT 2L

ELEV, ALT, HGT IN FT
DIST IN NM
BRG ARE MAG
VAR 0°W (2023)



COMMUNICATION FAILURE:

- SET TRANSPONDER TO MODE A/C CODE 7600.
- IF UNDER PILOT NAVIGATION, MAINTAIN ASSIGNED LEVEL FOR 3 MINUTES. IF NO ONWARD CLEARANCE IS RECEIVED, SUBSEQUENTLY CLIMB TO COMPLY WITH SID.
- IF UNDER RADAR VECTORING, MAINTAIN VECTOR FOR 2 MINUTES, IF BELOW MSA CLIMB TO MSA, THEN TRACK TO INTERCEPT CLEARED OR PREVIOUSLY ASSIGNED SID TO DESTINATION.