

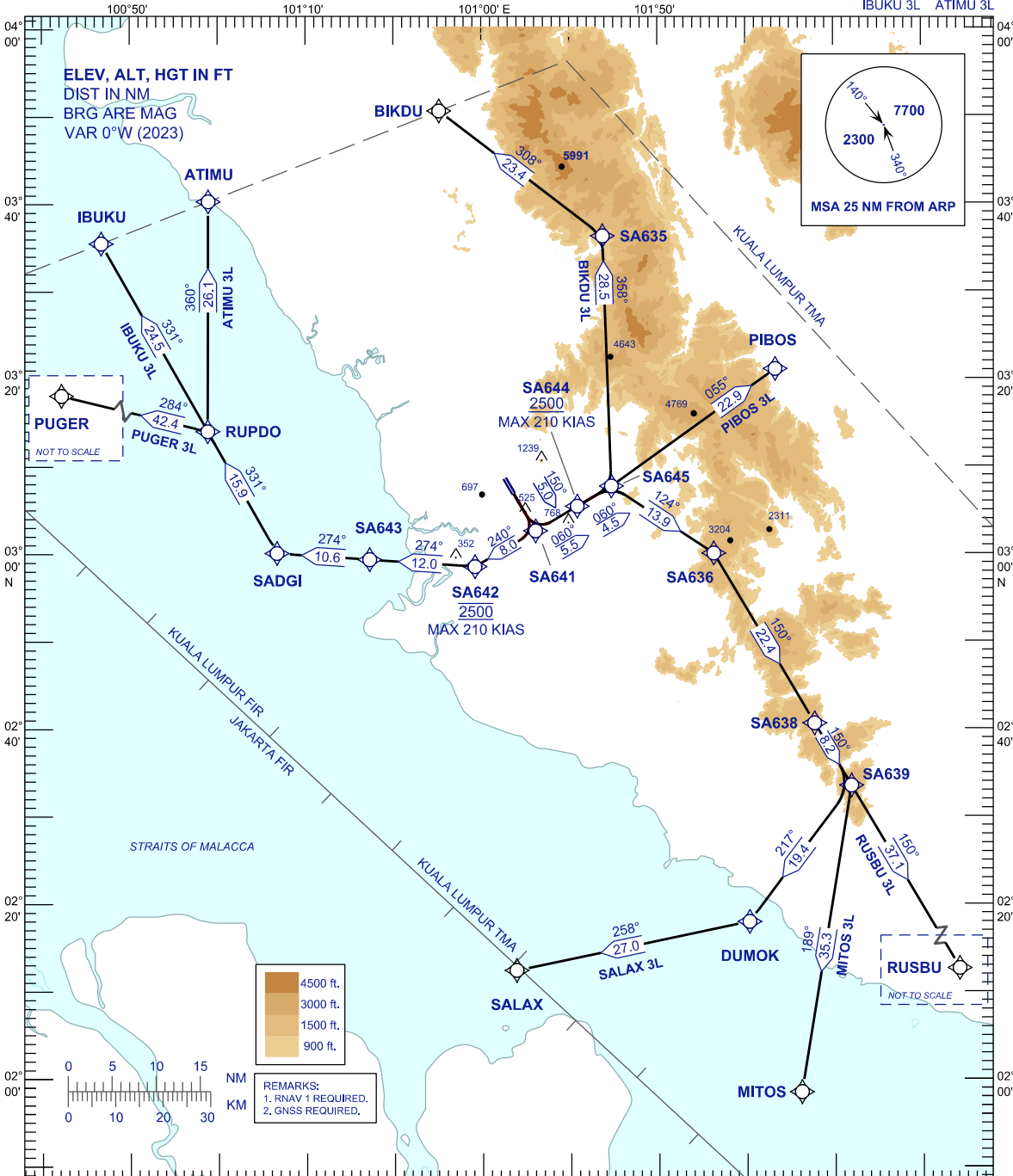
**STANDARD DEPARTURE CHART
INSTRUMENT (SID) - ICAO**

TRANSITION ALTITUDE
11000FT

APP	118.65	ACD	120.45
	124.20	SMC	121.90
	135.25	TWR	118.20
FIS	126.10	ATIS	127.60

**SUBANG/SULTAN ABDUL
AZIZ SHAH (WMSA)
RNAV RWY 15**

BIKDU 3L PIBOS 3L RUSBU 3L
MITOS 3L SALAX 3L PUGER 3L
IBUKU 3L ATIMU 3L



COMMUNICATION FAILURE:

- SET TRANSPONDER TO MODE A/C CODE 7600.
- IF UNDER PILOT NAVIGATION, MAINTAIN ASSIGNED LEVEL FOR 3 MINUTES. IF NO ONWARD CLEARANCE IS RECEIVED, SUBSEQUENTLY CLIMB TO COMPLY WITH SID.
- IF UNDER RADAR VECTORED, MAINTAIN VECTOR FOR 2 MINUTES, IF BELOW MSA CLIMB TO MSA, THEN TRACK TO INTERCEPT CLEARED OR PREVIOUSLY ASSIGNED SID TO DESTINATION.

CHANGES : CHART REPLACEMENT - REVISED PDG & REMOVAL KIMAT DEPARTURE.
ESTABLISH NEW WPT - SA641, SA642, SA643, SA644, SA645.
REMOVAL WPT - SA631, SA632, SA633, SA634, SA637, SA640.