

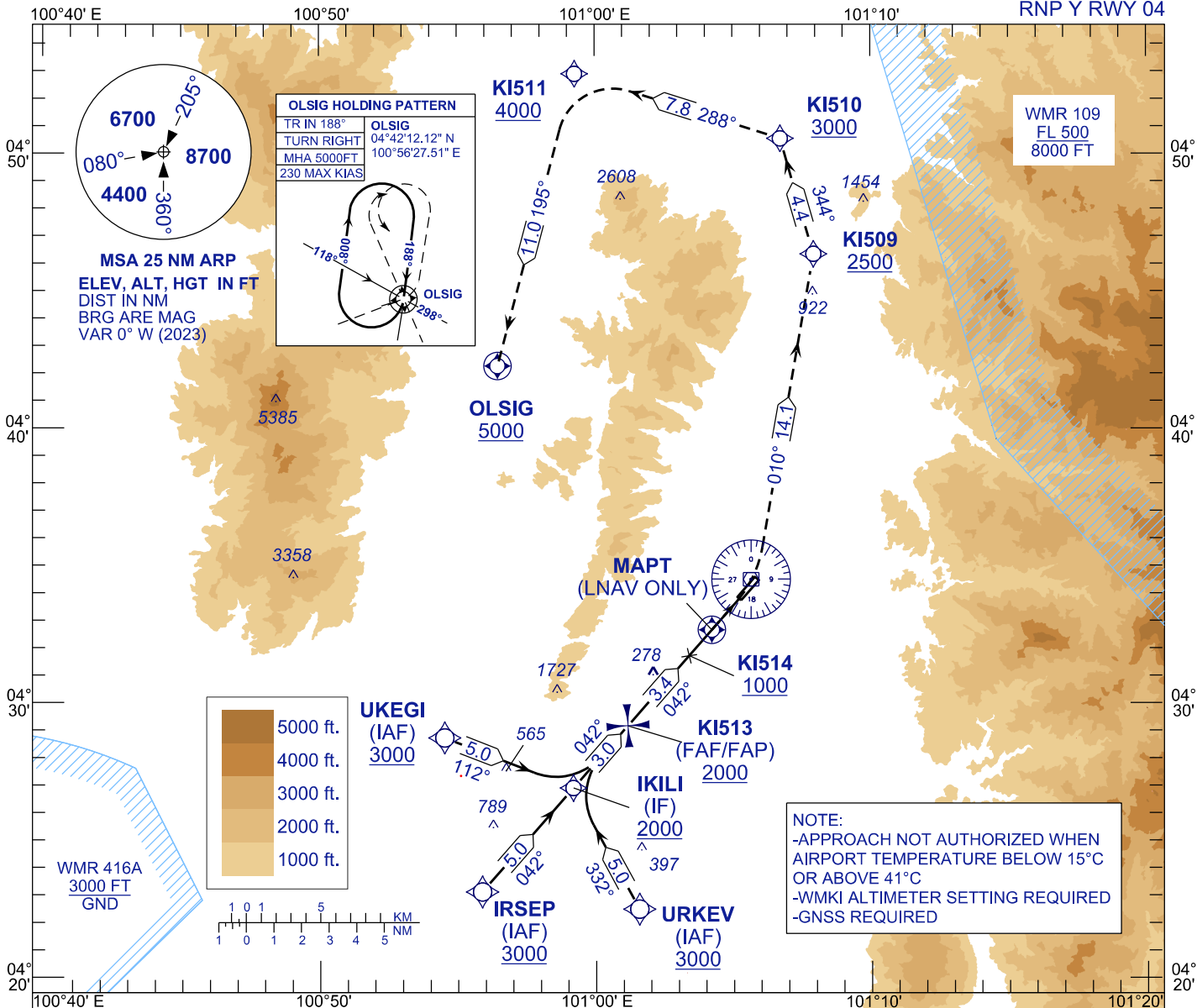
INSTRUMENT APPROACH CHART - ICAO

AERODROME ELEV 131 FT
 HEIGHTS RELATED TO
 THR RWY 04 - ELEV 131 FT

TWR	122.10
SMC	121.60
ATIS	127.05

IPOH/SULTAN AZLAN SHAH (WMKI)

RNP Y RWY 04



NOTE:
 -APPROACH NOT AUTHORIZED WHEN AIRPORT TEMPERATURE BELOW 15°C OR ABOVE 41°C
 -WMKI ALTIMETER SETTING REQUIRED
 -GNSS REQUIRED

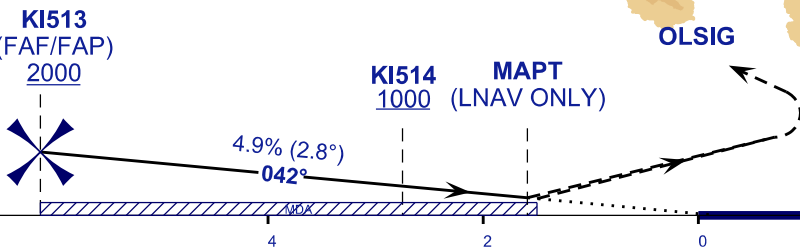
TCH 53
 VPA 2.8°

TRANSITION LEVEL FL 130
 TRANSITION ALT 11000

MISSED APPROACH
 CLIMB TO 5000ft OR ABOVE VIA RNP Y
 MISSED APCH TRACK TO OLSIG
 OR AS DIRECTED BY ATC

CAUTION
 MISSED APPROACH SPEED
 MAX 185 KIAS

THR ELEV 131
 TO THR 04 (NM)



CATEGORY OF AIRCRAFT	OCA (H)			
	A	B	C	D
LNAV ONLY	510 (379)			
LNAV/VNAV	615 (484)	634 (503)	643 (512)	654 (523)

DIST THR / RWY04	NM	6.1	5.1	4.1	3.1	2.1	1.1
ALTITUDE	FT	2000	1700	1402	1104	807	510

GROUND SPEED (GS)	KT	80	100	120	140	160	180
FAF04-MA04(4.6 NM)	MIN:SEC	3:28	2:46	2:18	1:59	1:44	1:32
RATE OF DESCEND (318.4 FT/NM)	FT/MIN	400	500	590	690	790	890