

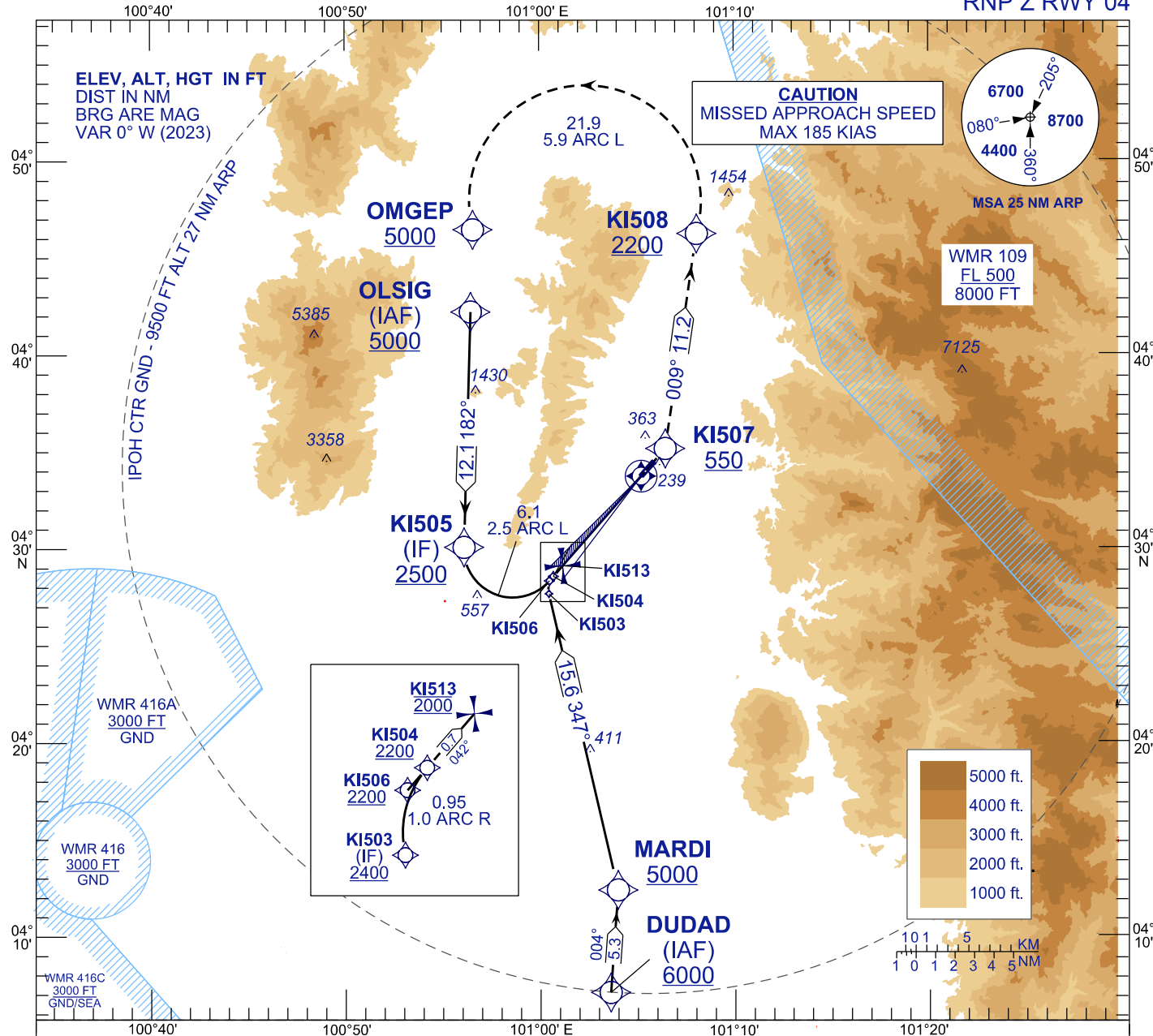
**INSTRUMENT
APPROACH
CHART - ICAO**

AERODROME ELEV 131 FT
HEIGHTS RELATED TO
THR RWY 04 - ELEV 131 FT

TWR 122.10
SMC 121.60
ATIS 127.05

**IPOH/SULTAN
AZLAN SHAH (WMKI)**

RNP Z RWY 04



TCH 53
VPA 2.8°

TRANSITION LEVEL FL 130
TRANSITION ALT 11000

MISSED APPROACH
CLIMB TO 5000FT OR ABOVE VIA RNP Z MISSED APCH
TRACK TO OMGEP OR AS DIRECTED BY ATC

CAUTION
MISSED APPROACH SPEED
MAX 185 KIAS

THR ELEV 131
TO THR 04 (NM)

STRAIGHT IN-APPROACH	OCA (H)	
CATEGORY OF AIRCRAFT	C	D
RNP 0.3	488 (357)	
CIRCLING AND ALTERNATE N/A		

AUTHORIZATION REQUIRED

NOTES

- 1) APPROACH NOT AUTHORIZED WHEN AIRPORT TEMPRETURE BELOW 15°C OR ABOVE 40°C.
- 2) RF REQUIRED.
- 3) WMKI ALTIMETER SETTING REQUIRED.
- 4) GNSS REQUIRED.
- 5) PAPI AND VERTICAL PATH ANGLE NOT COINCIDENT.
- 6) RNP 0.30 FROM IAFS TO KI507.
- 7) RNP 0.50 FROM KI507 TO KI504

DISTANCE IN NM. BEARING ARE MAGNETIC. ELEVATION IN FEET AMSL.