

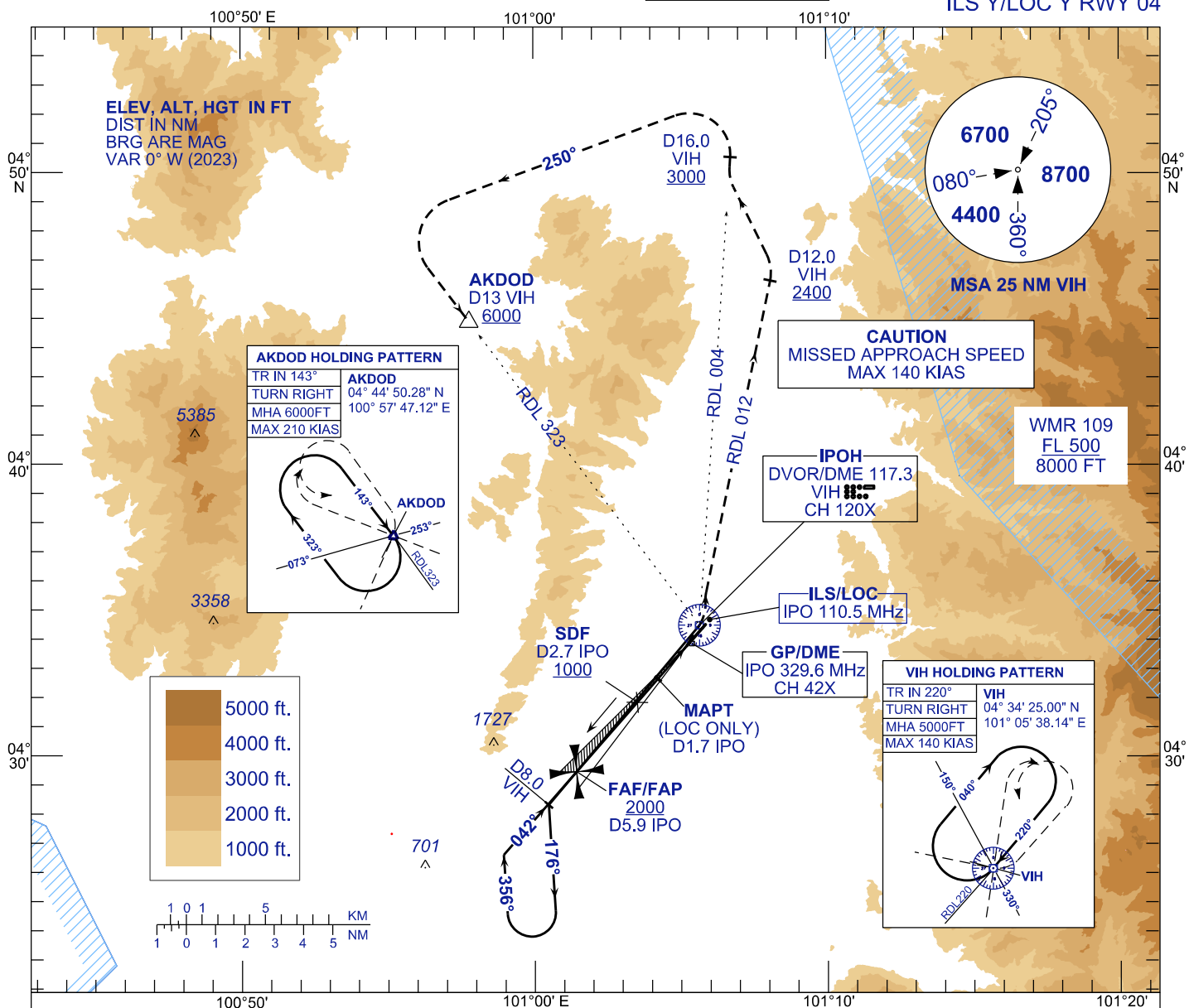
# INSTRUMENT APPROACH CHART - ICAO

**AERODROME ELEV 131 FT**  
 HEIGHTS RELATED TO  
 THR RWY 04 - ELEV 131 FT

TWR 122.10  
 SMC 121.60  
 ATIS 127.05

## IPOH/SULTAN AZLAN SHAH (WMKI)

ILS Y/LOC Y RWY 04

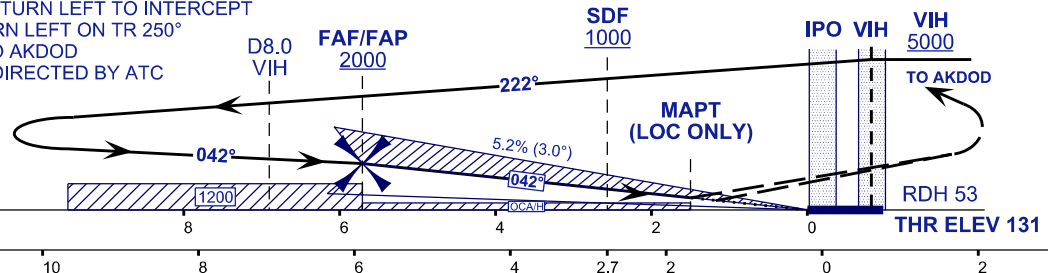


### MISSED APPROACH

AT DA/DH/MAPT DIRECT TO VIH, TURN LEFT  
 ON RDL 012 VIH, AT D12.0 VIH TURN LEFT TO INTERCEPT  
 RDL 004 VIH, AT D16.0 VIH TURN LEFT ON TR 250°  
 TO INTERCEPT RDL323 VIH TO AKDOD  
 AT OR ABOVE 6000FT OR AS DIRECTED BY ATC

TRANSITION LEVEL FL 130  
 TRANSITION ALT 11000

**CAUTION**  
 MISSED APPROACH SPEED  
 MAX 140 KIAS



	OCA (H)	
CATEGORY OF AIRCRAFT	A	B
LOC/DME (GP IN-OP)	550 (419)	
ILS/DME CAT I	464(333)	475(344)

DME IPO	NM	5.9	4.9	3.9	2.9	1.9	0.9
DIST THR / RW04	NM	5.7	4.7	3.7	2.7	1.7	0.7
ALTITUDE	FT	2000	1680	1361	1042	724	406
GROUND SPEED (GS)	KT	80	100	120	140	160	180
FAF04-THR(5.7 NM)	MIN:SEC	4:17	3:25	2:51	2:27	2:08	1:54
RATE OF DESCEND (318.4 FT/NM)	FT/MIN	420	530	640	740	850	960