

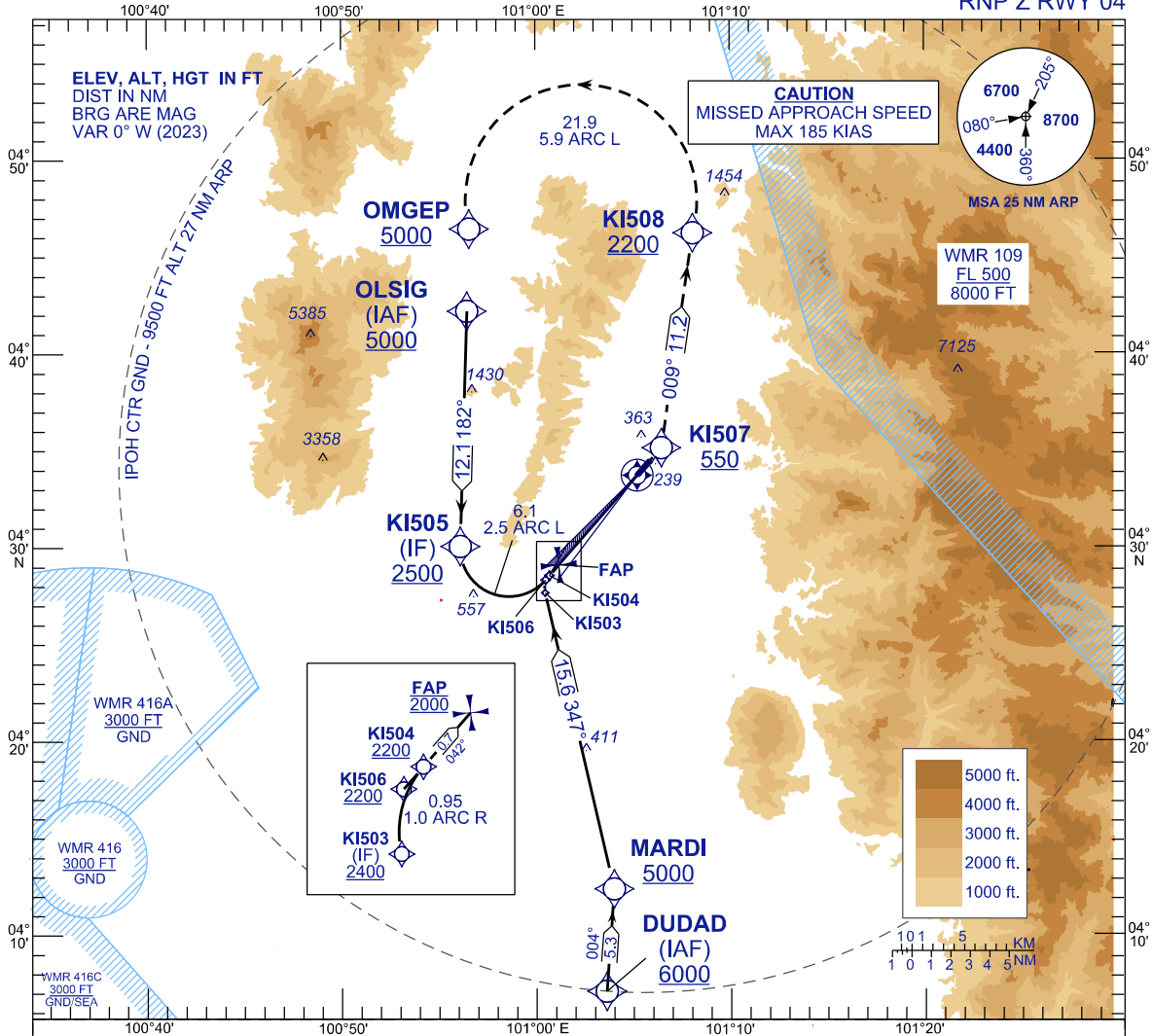
**INSTRUMENT  
APPROACH  
CHART - ICAO**

**AERODROME ELEV 131 FT**  
HEIGHTS RELATED TO  
THR RWY 04 - ELEV 131 FT

TWR	122.10
SMC	121.60
ATIS	127.05

**IPOH/SULTAN  
AZLAN SHAH (WMKI)**

RNP Z RWY 04



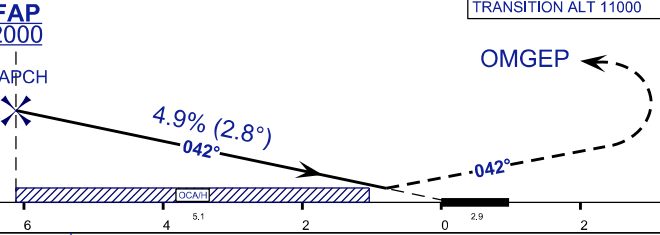
TCH 53  
VPA 2.8°

TRANSITION LEVEL FL 130  
TRANSITION ALT 11000

**MISSED APPROACH**  
CLIMB TO 5000FT OR ABOVE VIA RNP Z MISSED APCH  
TRACK TO OMGEP OR AS DIRECTED BY ATC

**CAUTION**  
MISSED APPROACH SPEED  
MAX 185 KIAS

THR ELEV 131  
TO THR 04 (NM)



STRAIGHT-IN-APPROACH	OCA (H)	
CATEGORY OF AIRCRAFT	C	D
RNP 0.3	488 (357)	
CIRCLING AND ALTERNATE N/A		

**AUTHORIZATION REQUIRED**

**NOTES**

- 1) APPROACH NOT AUTHORIZED WHEN AIRPORT TEMPERATURE BELOW 15°C OR ABOVE 40°C.
- 2) RF REQUIRED.
- 3) WMKI ALTIMETER SETTING REQUIRED.
- 4) GNSS REQUIRED.
- 5) PAPI AND VERTICAL PATH ANGLE NOT COINCIDENT.
- 6) RNP 0.30 FROM IAFS TO KI507.
- 7) RNP 0.50 FROM KI507 TO KI504

DISTANCE IN NM. BEARING ARE MAGNETIC. ELEVATION IN FEET AMSL.