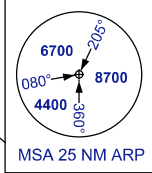
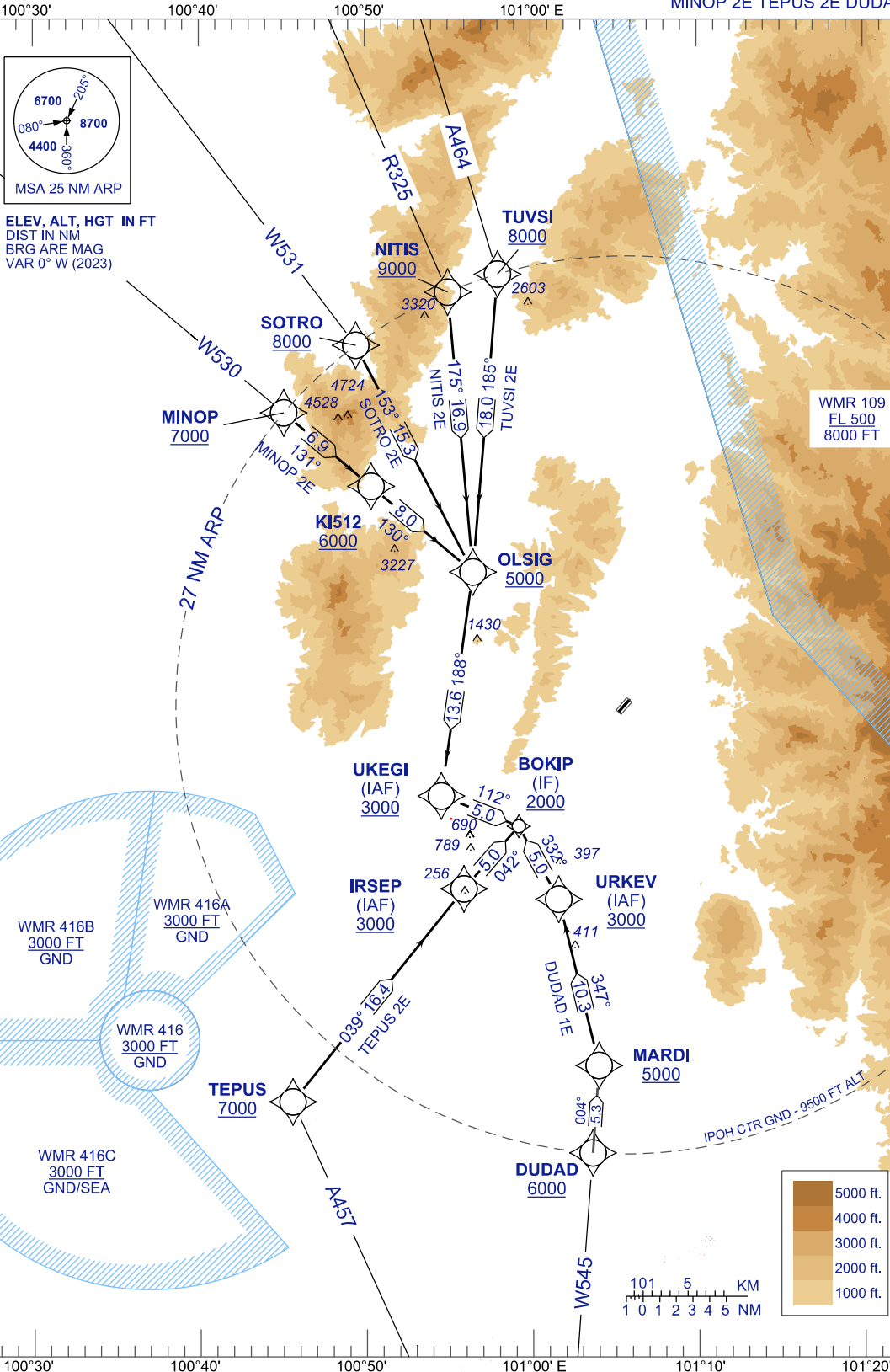


STANDARD ARRIVAL CHART INSTRUMENT (STAR) - ICAO

**IPOH/SULTAN
AZLAN SHAH (WMKI)**
RNAV (GNSS) RWY 04
TUVSI 2E NITIS 2E SOTRO 2E
MINOP 2E TEPUS 2E DUDAD 1E

TRANSITION ALTITUDE
11000 FT

TWR 122.10
SMC 121.60
ATIS 127.05



ELEV, ALT, HGT IN FT
DIST IN NM
BRG ARE MAG
VAR 0° W (2023)

WMR 109
FL 500
8000 FT

