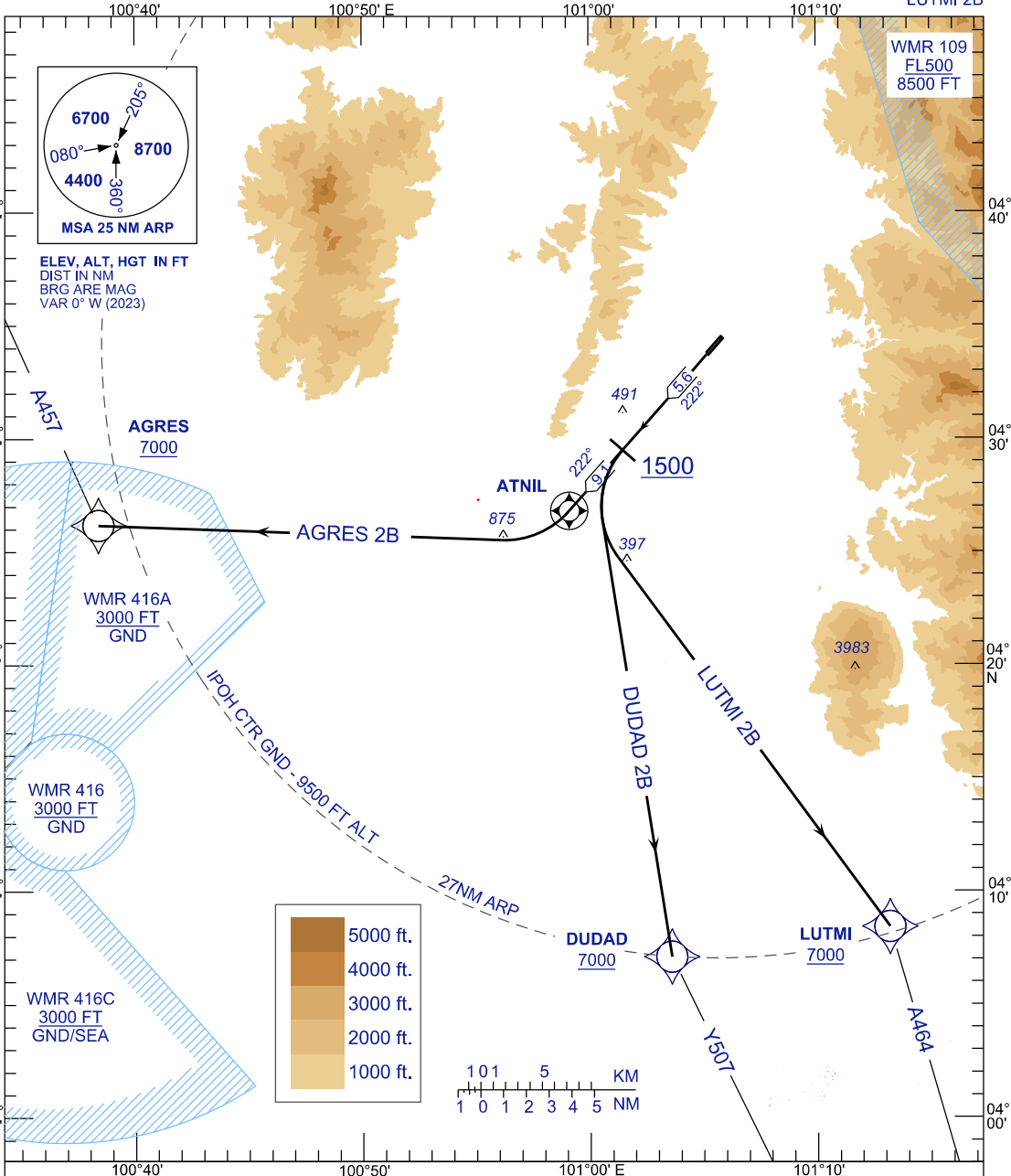


STANDARD DEPARTURE CHART INSTRUMENT (SID) - ICAO

**IPOH/SULTAN
AZLAN SHAH (WMKI)**
RNAV (GNSS) RWY 22
AGRES 2B DUDAD 2B
LUTMI 2B

TRANSITION ALTITUDE
11000 FT

TWR 122.10
SMC 121.60
ATIS 127.05



COMMUNICATION FAILURE:

- * SQUAWK 7600
- * IF UNDER PILOT NAVIGATION, MAINTAIN LAST ASSIGNED LEVEL FOR 3 MINUTES, IF NO ONWARD CLEARANCE IS RECEIVED SUBSEQUENTLY CLIMB TO COMPLY WITH SID
- * IF UNDER RADAR VECTORED, MAINTAIN VECTOR FOR 2 MINUTES
- * IF BELOW MSA, CLIMB TO MSA, THEN TRACK TO INTERCEPT CLEARED OR PREVIOUSLY ASSIGNED SID TO DESTINATION