

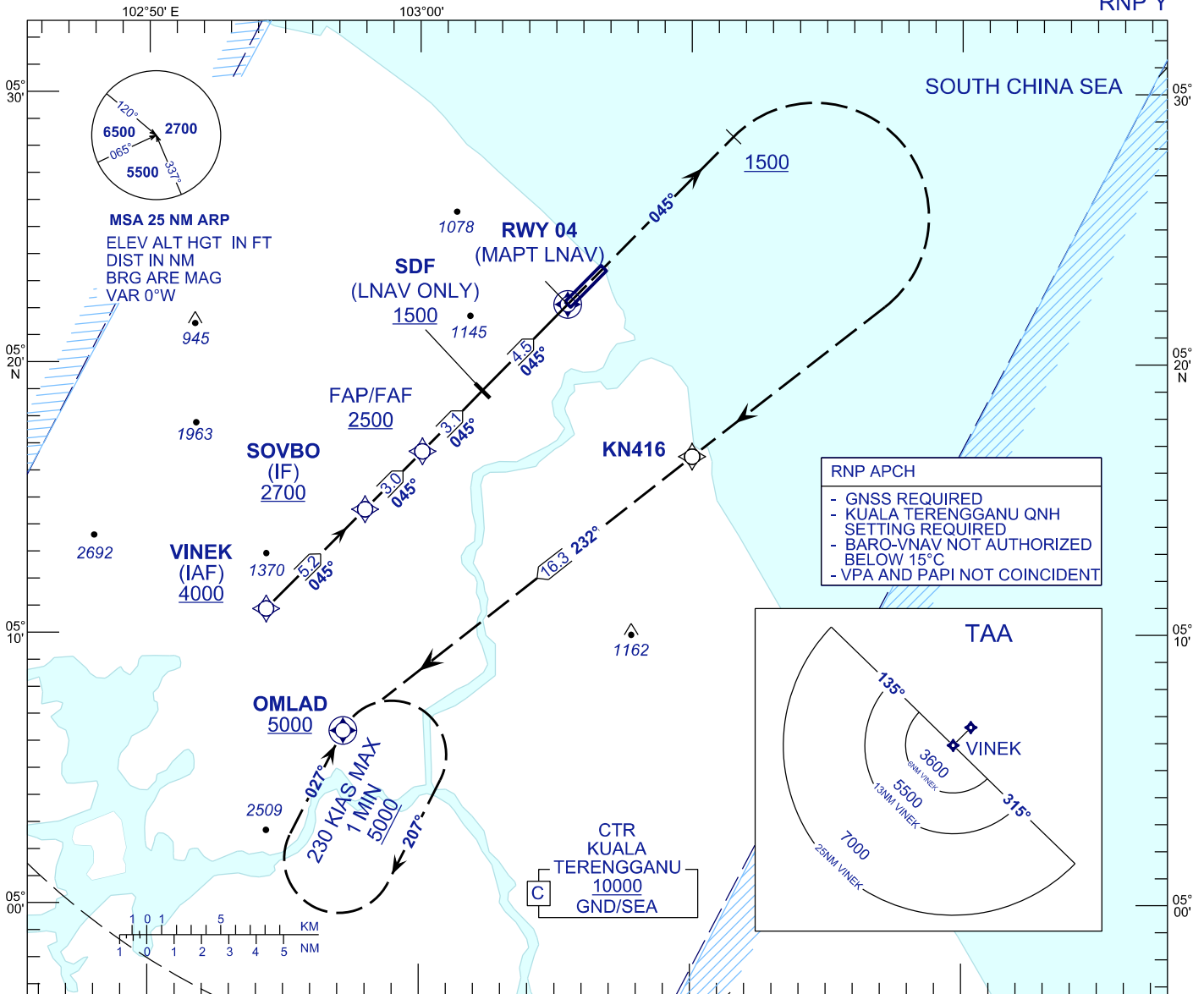
# INSTRUMENT APPROACH CHART - ICAO

AERODROME ELEV 20 FT  
HEIGHT RELATED TO  
THR RWY 04 - ELEV 19 FT

APP	123.6
	235.32
	121.5
TWR	119.05
SMC	121.6
ATIS	126.65

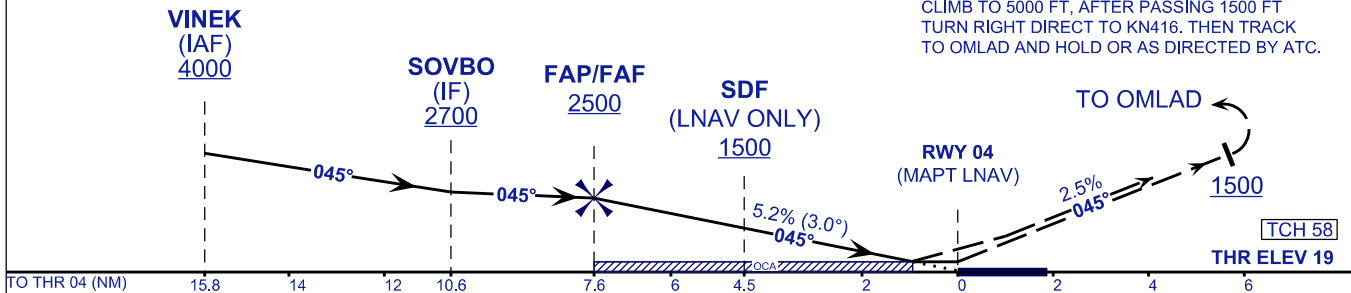
**KUALA TERENGGANU/  
SULTAN MAHMUD (WMKN)  
RWY 04**

RNP Y



TRANSITION LEVEL FL 130  
TRANSITION ALT 11000

**MISSED APPROACH**  
CLIMB TO 5000 FT, AFTER PASSING 1500 FT  
TURN RIGHT DIRECT TO KN416. THEN TRACK  
TO OMLAD AND HOLD OR AS DIRECTED BY ATC.



		OCA/H			
ACFT CAT.		A	B	C	D
STRAIGHT IN APPROACH	LNAV	374 (354)			
	LNAV/VNAV	374 (355)			

DISTANCE TO THRESHOLD (NM)	7.6	6.6	5.6	4.6	3.6	2.6	1.6	0.6
ALTITUDE (FT)	2500	2179	1861	1542	1224	905	587	269

GROUND SPEED (GS)	KTS	80	100	120	140	160	180
FAP - RWY04 (7.6 NM)	MIN:SEC	5:42	4:34	3:48	3:16	2:51	2:32
RATE OF DESCEND (318.4 FT/NM)	FT/MIN	420	530	640	740	850	960

CHANGES : AERODROME AND THRESHOLD ELEVATION