

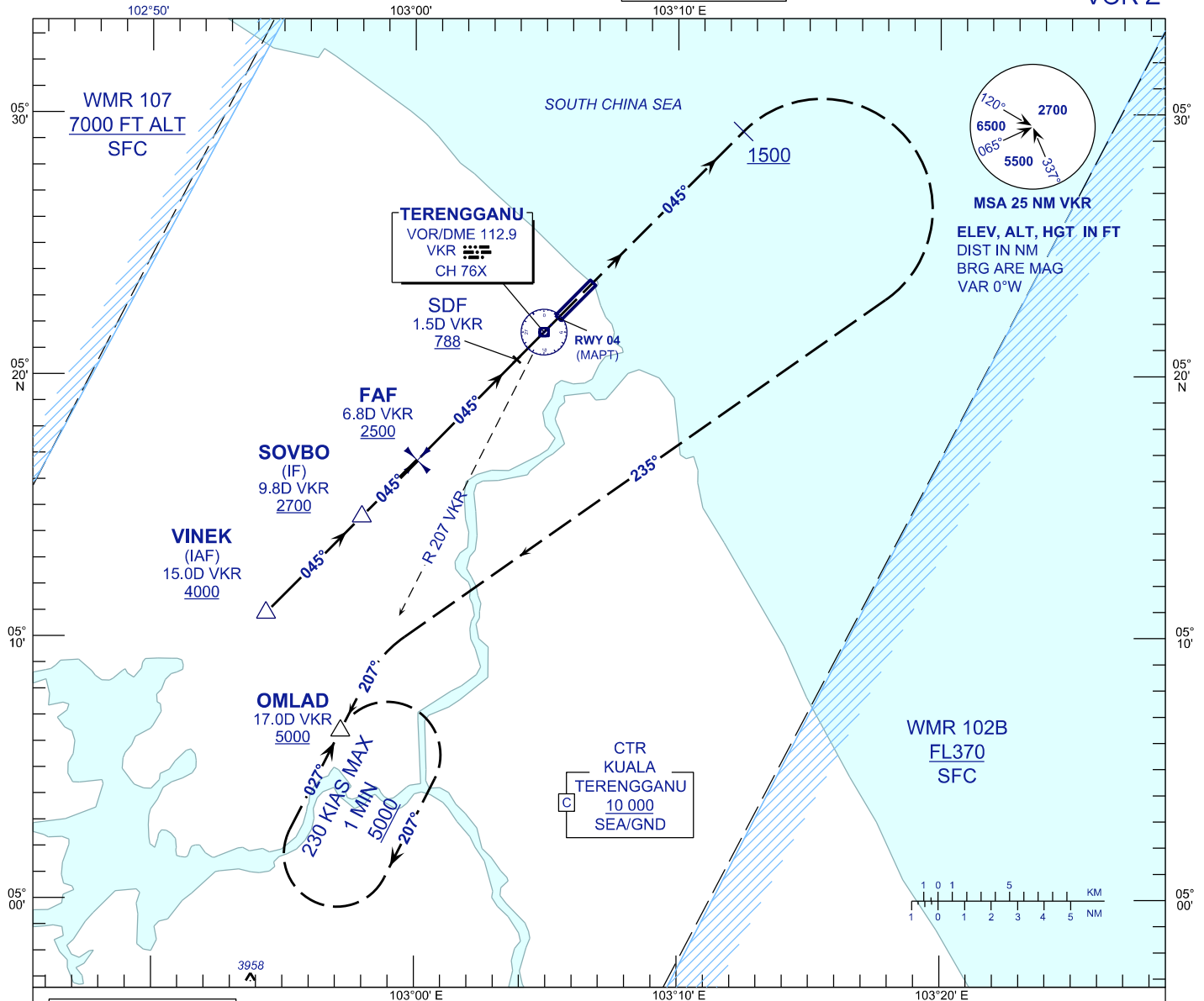
# INSTRUMENT APPROACH CHART - ICAO

AERODROME ELEV 20 FT  
HEIGHT RELATED TO  
THR RWY 04 - ELEV 19 FT

APP	123.6
	235.32
	121.5
TWR	119.05
SMC	121.6
ATIS	126.65

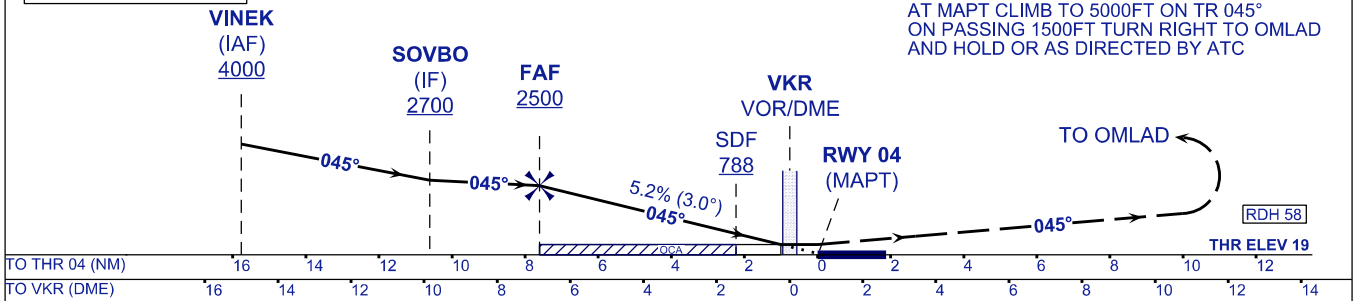
## KUALA TERENGGANU/ SULTAN MAHMUD (WMKN) RWY 04

VOR Z



TRANSITION LEVEL FL130  
TRANSITION ALT 11000

**MISSED APPROACH**  
AT MAPT CLIMB TO 5000FT ON TR 045°  
ON PASSING 1500FT TURN RIGHT TO OMLAD  
AND HOLD OR AS DIRECTED BY ATC



OCA (OCH)	A	B	C	D
VOR/DME	390(371)			

DME VKR	NM	6.8	5.8	4.8	3.8	2.8	1.8	0.8	0.2
DIST THR/RWY04	NM	7.6	6.6	5.6	4.6	3.6	2.6	1.6	0.6
ALTITUDE	FT	2500	2178	1858	1538	1218	898	579	260

GROUND SPEED (GS)	KNOTS	80	100	120	140	160	180
FAP - RWY04 (7.6 NM)	MIN:SEC	5:42	4:34	3:48	3:16	2:51	2:32
RATE OF DESCEND (318.4 FT/NM)	FT/MIN	420	530	640	740	850	960

CHANGES : AERODROME AND THRESHOLD ELEVATION