

**INSTRUMENT  
APPROACH  
CHART - ICAO**

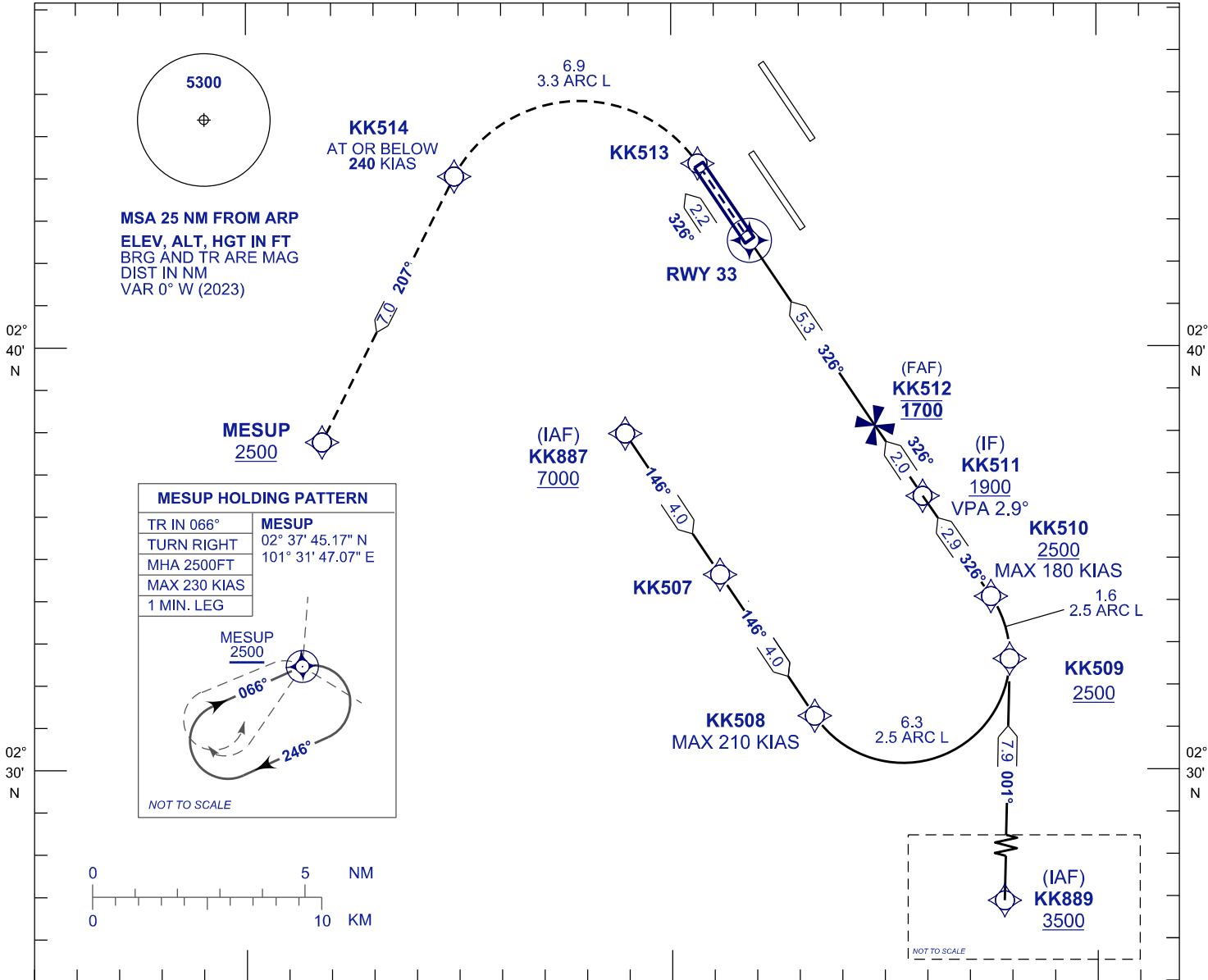
**AERODROME ELEV 69 FT**  
HEIGHT RELATED TO  
THR RWY 33 - ELEV 28 FT

APP 119.45 125.85 125.10	TWR 119.80	SMC 118.05	ATIS 128.05
-----------------------------------	---------------	---------------	----------------

**SEPANG/KL INTERNATIONAL  
AIRPORT (WMKK)**

**RNP Z RWY 33 (AR)**

101° 30' E

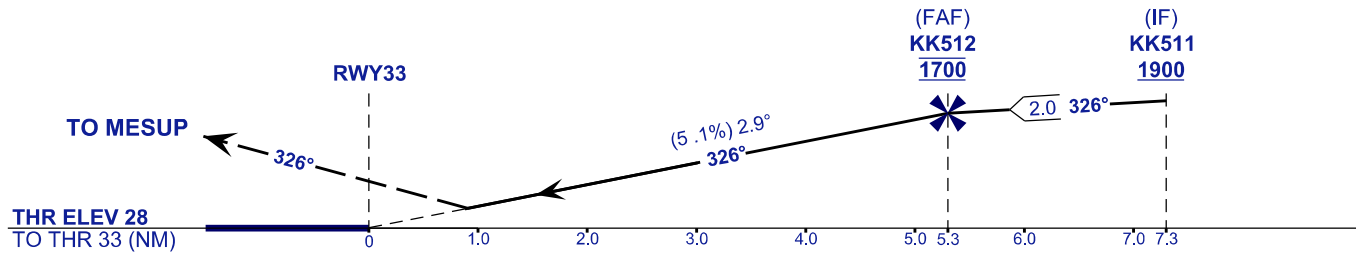


VPA 2.9°  
RDH 52FT

**MISSED APPROACH**

CLIMB TO 2500 FT OR ABOVE VIA RNP (AR) MISSED APPROACH,  
TRACK TO MESUP AND HOLD OR AS DIRECTED BY ATC.

TRANSITION LEVEL FL130  
TRANSITION ALT 11000 FT



STRAIGHT-IN APPROACH	OCA (OCH)	
CATEGORY OF AIRCRAFT	C	D
RNP (0.30)	530 (502)	
CIRCLING AND ALTERNATE N/A		

**AUTHORIZATION REQUIRED**

**NOTES**

- 1) GNSS REQUIRED.
- 2) RF REQUIRED.
- 3) APPROACH NOT AUTHORIZED WHEN AIRPORT TEMPERATURE BELOW 18°C OR ABOVE 40°C.
- 4) WMKK ALTIMETER SETTING REQUIRED.
- 5) PAPI AND VERTICAL PATH ANGLE NOT COINCIDENT.
- 6) RNP 0.30 FROM KK887 & KK889 TO THRESHOLD.
- 7) RNP 0.50 FROM RWY33 TO KK513.

DISTANCE IN NM. BEARING ARE MAGNETIC.  
ELEVATION IN FEET AMSL.