

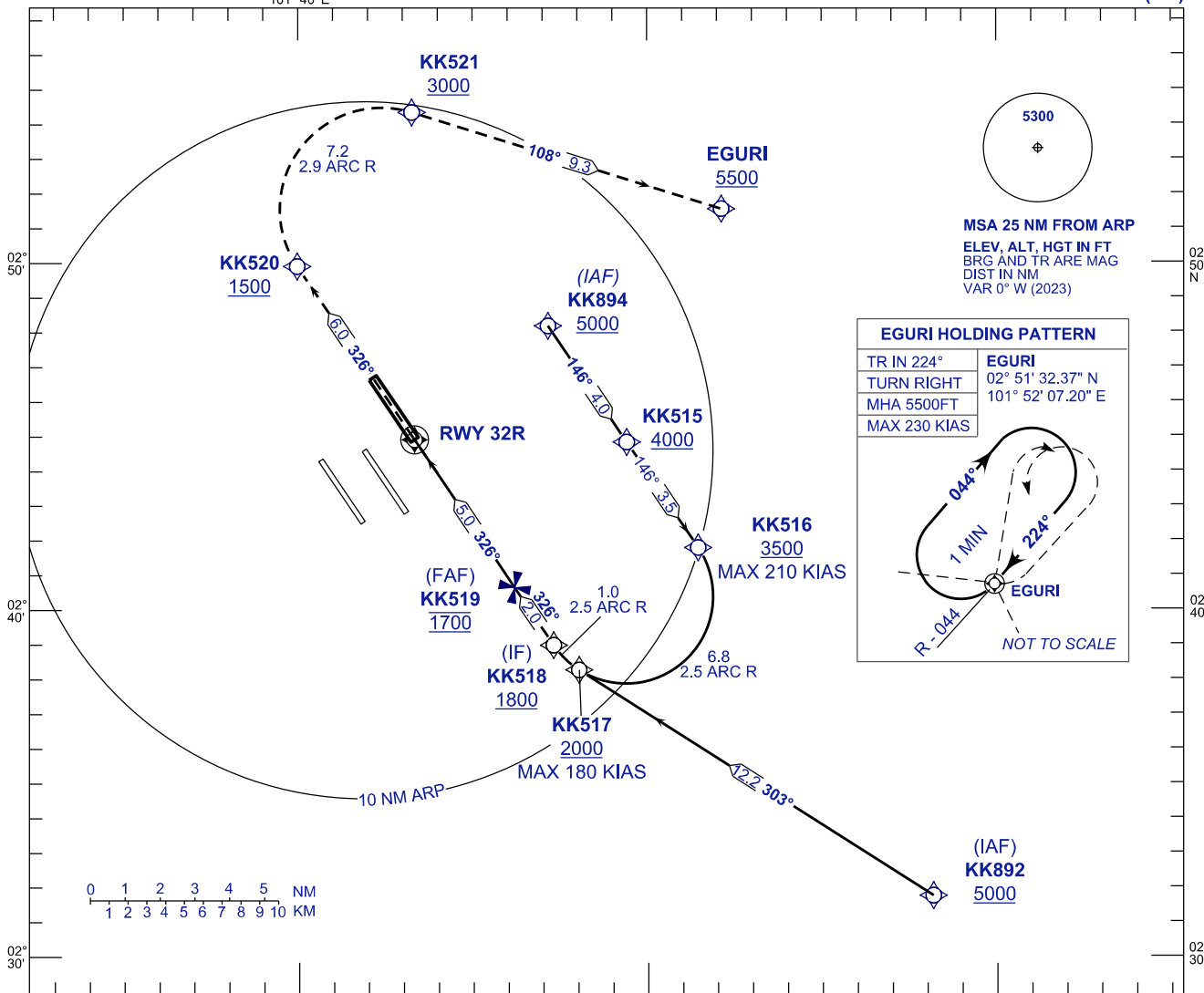
**INSTRUMENT
APPROACH
CHART - ICAO**

AERODROME ELEV 69 FT
HEIGHT RELATED TO
THR RWY 32R - ELEV 69 FT

APP 121.25 120.35 135.75	TWR 118.50 118.80	SMC 121.65	ATIS 128.05
-----------------------------------	-------------------------	---------------	----------------

**SEPANG/KL INTERNATIONAL
AIRPORT (WMKK)**

RNP Z RWY 32R (AR)



MSA 25 NM FROM ARP
ELEV, ALT, HGT IN FT
BRG AND TR ARE MAG
DIST IN NM
VAR 0° W (2023)

EGURI HOLDING PATTERN

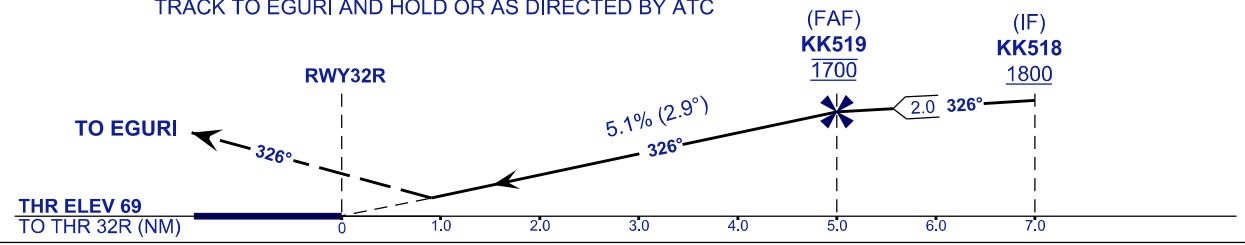
TR IN 224°	EGURI
TURN RIGHT	02° 51' 32.37" N
MHA 5500FT	101° 52' 07.20" E
MAX 230 KIAS	

NOT TO SCALE

VPA 2.9°
RDH 56FT

MISSED APPROACH
CLIMB TO 5500FT OR ABOVE VIA RNP (AR) MISSED APPROACH,
TRACK TO EGURI AND HOLD OR AS DIRECTED BY ATC

TRANSITION LEVEL FL130
TRANSITION ALT 11 000 FT



STRAIGHT - IN APPROACH	OCA (OCH)	
CATEGORY OF AIRCRAFT	C	D
RNP (0.30)	499 (430)	
CIRCLING AND ALTERNATE N/A		

AUTHORIZATION REQUIRED

NOTES

- 1) APPROACH NOT AUTHORIZED WHEN AIRPORT TEMPERATURE BELOW 18°C OR ABOVE 40°C.
- 2) RF REQUIRED.
- 3) WMKK ALTIMETER SETTING REQUIRED.
- 4) GNSS REQUIRED.
- 5) PAPI AND VERTICAL PATH ANGLE NOT COINCIDENT.
- 6) RNP 0.30 FROM IAFS TO THRESHOLD.
- 7) RNP 0.50 FROM RWY32R TO KK520

DISTANCE IN NM. BEARING ARE MAGNETIC. ELEVATION IN FEET AMSL.

CHANGES : FOR WPT KK513 CHANGE FM FLY-OVER TO FLY BY,
ALT KK519 TO READ AS AT 1700 IN PROFILE VIEW.