

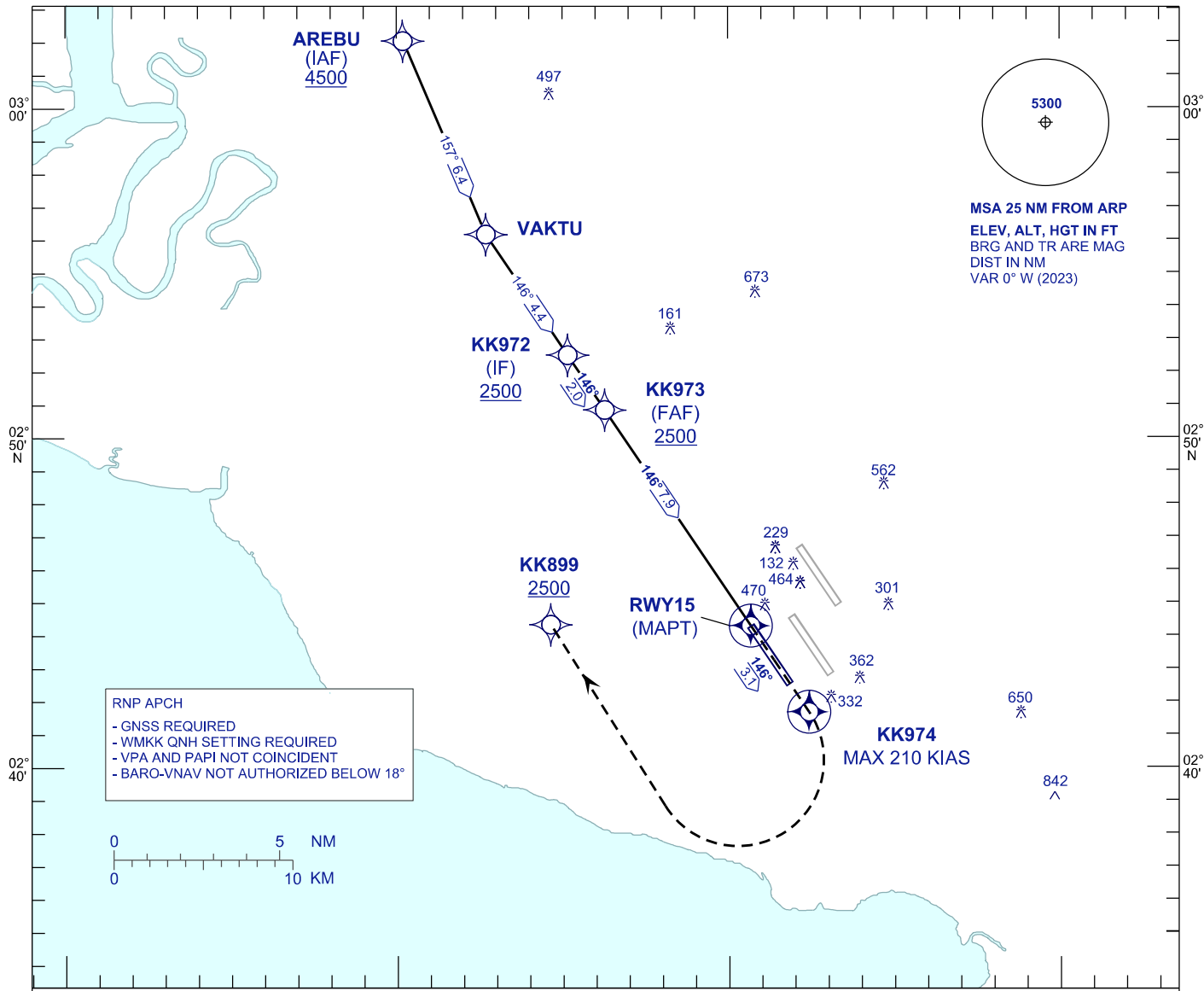
**INSTRUMENT
APPROACH
CHART - ICAO**

AERODROME ELEV 69 FT
HEIGHT RELATED TO
THR RWY 15 - ELEV 28 FT

APP	TWR	SMC	ATIS
124.20	119.80	118.05	128.05
119.45			
125.10			

**SEPANG/KL INTERNATIONAL
AIRPORT (WMKK)**

RNP X RWY 15



VPA 2.9°
TCH 52 FT

MISSED APPROACH
AT MAPT MAINTAIN TR146 TO KK974 CLIMB TO 2500FT OR ABOVE.
AT KK974, TURN RIGHT TO KK899 OR AS DIRECTED BY ATC.

TRANSITION LEVEL FL130
TRANSITION ALT 11 000

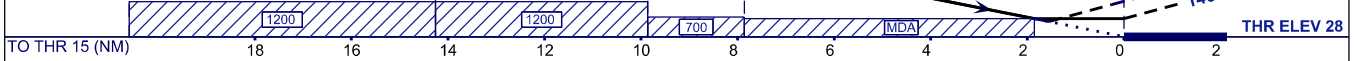
AREBU (IAF) 4500

CAUTION
SPEED MAX 210 KIAS UNTIL CROSSING KK974

VAKTU

KK972 (IF) 2500
KK973 (FAF) 2500

RWY15 (MAPT LNAV ONLY)



STRAIGHT-IN APPROACH	OCA (OCH)			
CATEGORY OF AIRCRAFT	A	B	C	D
LNAV / VNAV	556 (528)			
LNAV	650 (622)			

GROUND SPEED (GS)	KT	80	100	120	140	160	180
FAF - RWY15 (7.9 NM)	MIN:SEC	5:54	4:43	3:56	3:22	2:57	2:37
RATE OF DESCEND (5.1% / 2.9°)	FT/MIN	410	510	620	720	820	920

DIST THR/RWY15	NM	7.9	7.0	6.0	5.0	4.0	3.0	2.0	1.0
ALTITUDE	FT	2500	2235	1972	1620	1312	1004	696	388

CHANGES : IN PROFILE VIEW, AMEND MAG TRACK FM AREBU TO VAKTU TO READ AS 157°.