

**STANDARD DEPARTURE CHART
INSTRUMENT (SID) - ICAO**

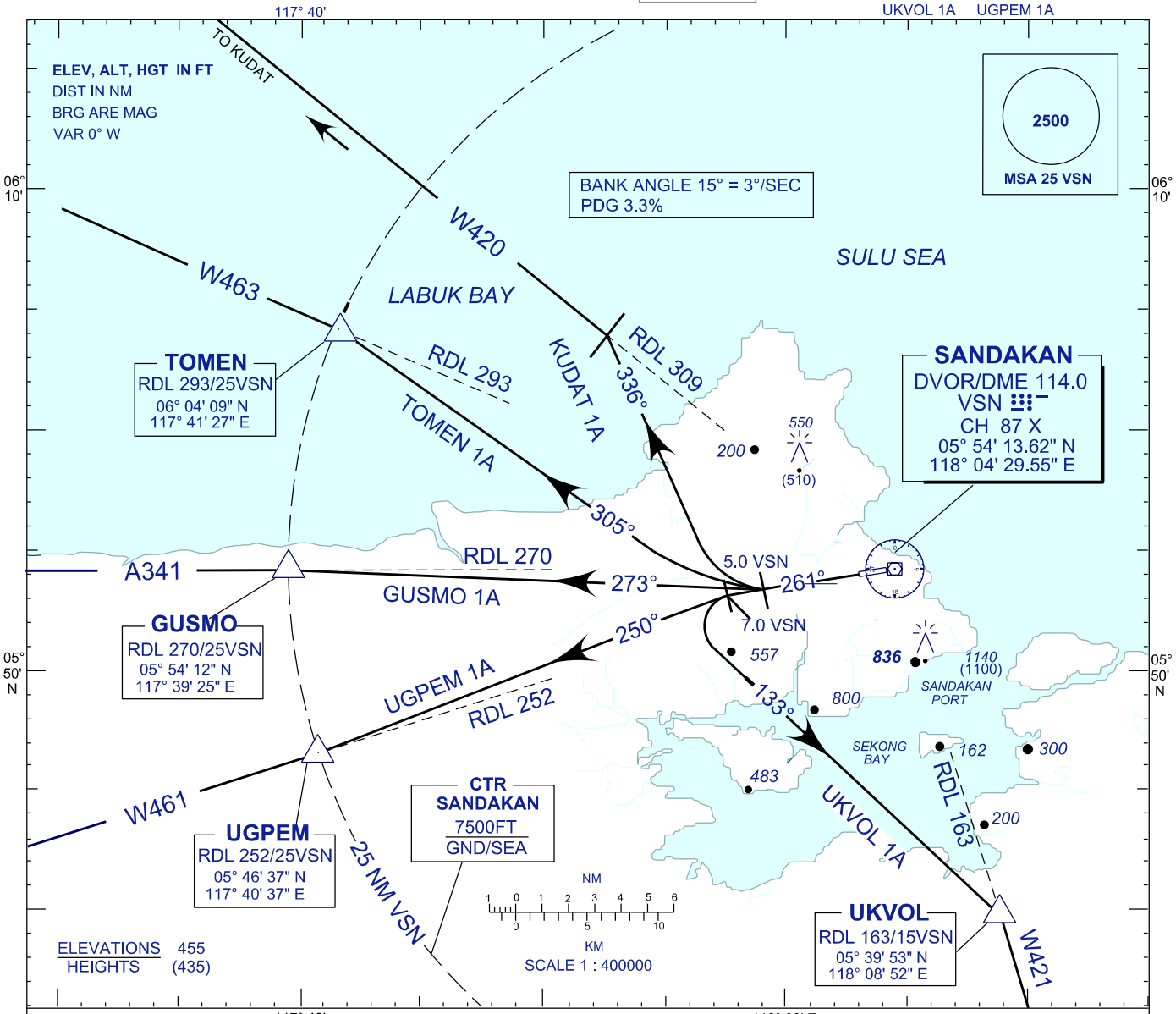
TRANSITION ALTITUDE
11000FT

SMC 121.9
TWR 122.05
APP 123.2
ATIS 128.2

SANDAKAN/SANDAKAN (WBKS)

RWY 26

KUDAT 1A TOMEN 1A GUSMO 1A
UKVOL 1A UGPEM 1A



**KUDAT 1 ALPHA DEPARTURE
TOMEN 1 ALPHA DEPARTURE
GUSMO 1 ALPHA DEPARTURE
UGPEM 1 ALPHA DEPARTURE
UKVOL 1 ALPHA DEPARTURE**

KUDAT 1 ALPHA DEPARTURE

- * TRACK 261° AT 5.0 DME VSN TURN RIGHT
- * TRACK 336° INTERCEPT RDL 309 VSN TO KUDAT

TOMEN 1 ALPHA DEPARTURE

- * TRACK 261° AT 5.0 DME VSN TURN RIGHT
- * TRACK 305° INTERCEPT RDL 293 VSN TO TOMEN

GUSMO 1 ALPHA DEPARTURE

- * TRACK 261°
- * AT 5.0 VSN TRACK 273° TO INTERCEPT RDL 270 TO GUSMO

UKVOL 1 ALPHA DEPARTURE

- * TRACK 261° AT 7.0 DME VSN TURN LEFT
- * TRACK 133° TO INTERCEPT RDL 163 VSN TO UKVOL

UGPEM 1 ALPHA DEPARTURE

- * TRACK 261° AT 7.0 DME VSN TURN LEFT
- * TRACK 250° TO INTERCEPT RDL 252 VSN TO UGPEM

CHANGES : SID DEPARTURE NAME UGVOL TO READ AS UKVOL IN TEXT VIEW.