

# STANDARD ARRIVAL CHART INSTRUMENT (STAR) - ICAO

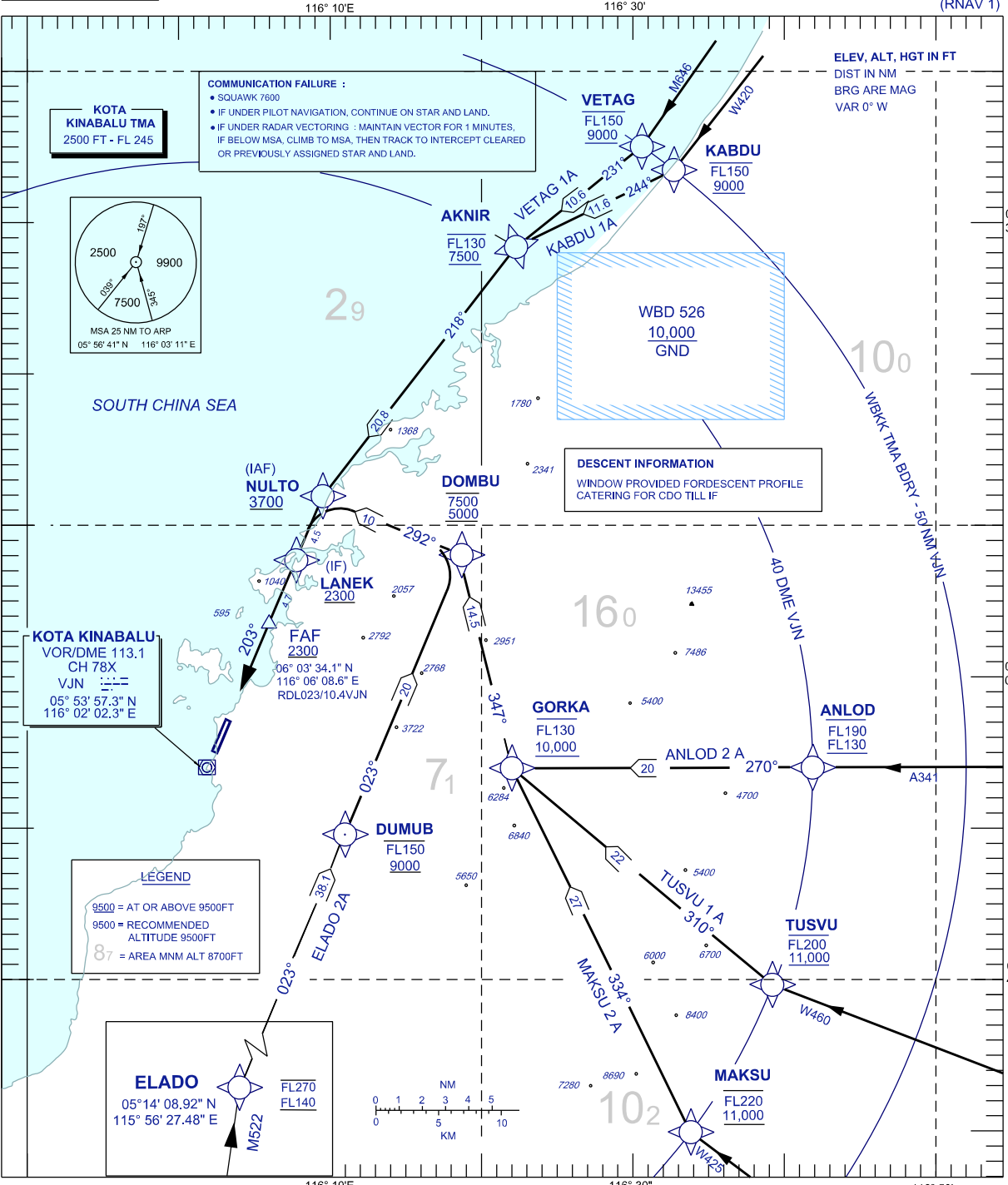
TRANSITION ALTITUDE  
11,000 FT

APP 119.1  
TWR 118.3  
GND 121.6  
ATIS 127.4

**KOTA KINABALU/KOTA KINABALU  
(WBKK)  
RWY 20**

ARRIVALS (EAST)  
(RNAV 1)

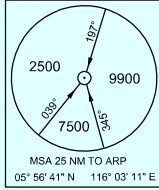
BANK ANGLE : 25° OR 3°/SEC



**KOTA KINABALU TMA**  
2500 FT - FL 245

**COMMUNICATION FAILURE :**

- SQUAWK 7600
- IF UNDER PILOT NAVIGATION, CONTINUE ON STAR AND LAND.
- IF UNDER RADAR VECTORING : MAINTAIN VECTOR FOR 1 MINUTES, IF BELOW MSA, CLIMB TO MSA, THEN TRACK TO INTERCEPT CLEARED OR PREVIOUSLY ASSIGNED STAR AND LAND.



**VETAG**  
FL150  
9000

**KABDU**  
FL150  
9000

ELEV. ALT, HGT IN FT  
DIST IN NM  
BRG ARE MAG  
VAR 0° W

**WBD 526**  
10,000  
GND

**DESCENT INFORMATION**  
WINDOW PROVIDED FOR DESCENT PROFILE  
CATERING FOR CDO TILL IF

**KOTA KINABALU**  
VOR/DME 113.1  
CH 78X  
VJN  
05° 53' 57.3" N  
116° 02' 02.3" E

**(IAF) NULTO**  
3700

**DOMBU**  
7500  
5000

**(IF) LANEK**  
2300

**FAF**  
2300  
06° 03' 34.1" N  
116° 06' 08.6" E  
RDL023/10.4VJN

**GORKA**  
FL130  
10,000

**ANLOD**  
FL190  
FL130

**DUMUB**  
FL150  
9000

**TUSVU**  
FL200  
11,000

**MAKSU**  
FL220  
11,000

**ELADO**  
05°14' 08.92" N  
115° 56' 27.48" E  
FL270  
FL140

**LEGEND**

9500 = AT OR ABOVE 9500FT  
9500 = RECOMMENDED ALTITUDE 9500FT  
87 = AREA MNM ALT 8700FT



CHANGES : FL VALUE FOR AKNIR & GORKA TO 130.