

# STANDARD DEPARTURE CHART INSTRUMENT (SID) - ICAO

**KUCHING/KUCHING (WBGW) RWY 25**

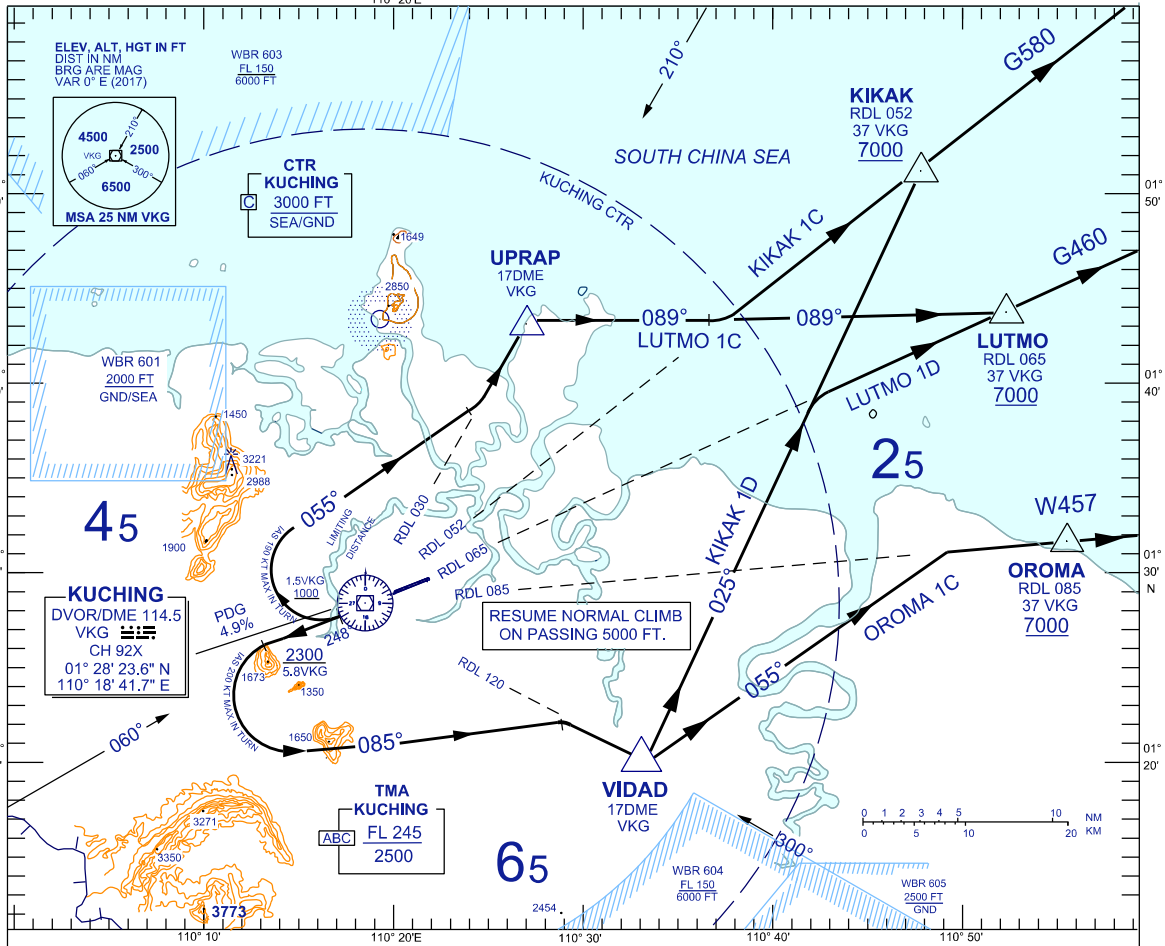
BANK ANGLE : 15° ACHIEVED

TRANSITION ALTITUDE  
11,000 FT

TWR 118.1 (P) SMC 121.9  
121.7 (S) ATIS 128.4  
APP 120.2 (P) FIS 134.75  
123.85 (S)  
ACC 134.5 (P)  
125.35 (S)

KIKAK 1C DEP  
LUTMO 1C DEP

KIKAK 1D DEP  
LUTMO 1D DEP  
OROMA 1C DEP



## KIKAK ONE CHARLIE DEPARTURE LUTMO ONE CHARLIE DEPARTURE

### RWY 25 (RIGHT TURN)

CLIMB AT 4.9% ON TRACK 248°  
AT/NOT LATER THAN 1.5DME VKG, TURN RIGHT,

#### FOR KIKAK ONE CHARLIE

TRACK 055°, TO INTERCEPT RDL 030 TO UPRAP THEN TRACK 089°  
TO INTERCEPT RDL 052 TO KIKAK

#### FOR LUTMO ONE CHARLIE

TRACK 055°, TO INTERCEPT RDL 030 TO UPRAP THEN TRACK 089°  
TO INTERCEPT RDL 065 (TO LUTMO) TO TRACK ON G460

## OROMA ONE CHARLIE DEPARTURE LUTMO ONE DELTA DEPARTURE KIKAK ONE DELTA DEPARTURE

### RWY 25 (LEFT TURN)

CLIMB AT 4.9% ON TRACK 248°  
AT/ABOVE 2300 FEET, TURN LEFT,

#### FOR OROMA ONE CHARLIE

TRACK 085° TO INTERCEPT RDL 120 TO VIDAD, THEN TRACK 055°  
TO INTERCEPT RDL 085 TO OROMA

#### FOR LUTMO ONE DELTA

TRACK 085° TO INTERCEPT RDL 120 TO VIDAD, THEN TRACK 025°  
TO INTERCEPT RDL 065 TO LUTMO

#### FOR KIKAK ONE DELTA

TRACK 085° TO INTERCEPT RDL 120 TO VIDAD, THEN TRACK 025°  
TO INTERCEPT RDL 052 (TO KIKAK) TO TRACK ON G580

SPEED(IAS)	120KT	140KT	160KT	180KT	200KT	230KT	265KT
4.9% ROC (FT/MIN)	599	698	799	899	997	1147	1324

## VERTICAL RESTRICTIONS :

ADHERE TO VERTICAL RESTRICTIONS eg . 7000 = NOT BELOW 7000 FT ON CLIMB UNLESS SPECIFICALLY CANCELLED BY ATC

## COMMUNICATION FAILURE :

- SQUAWK 7600
- IF UNDER PILOT NAVIGATION, MAINTAIN LAST ASSIGNED LEVEL FOR 3 MINUTES, IF NO ONWARD CLEARANCE IS RECEIVED, SUBSEQUENTLY CLIMB TO COMPLY WITH SID.
- IF UNDER RADAR VECTORING : MAINTAIN VECTOR FOR 2 MINUTES, IF BELOW MSA, CLIMB TO MSA, THEN TRACK TO INTERCEPT CLEARED OR PREVIOUSLY ASSIGNED SID TO DESTINATION