

STANDARD ARRIVAL CHART INSTRUMENT (STAR) - ICAO

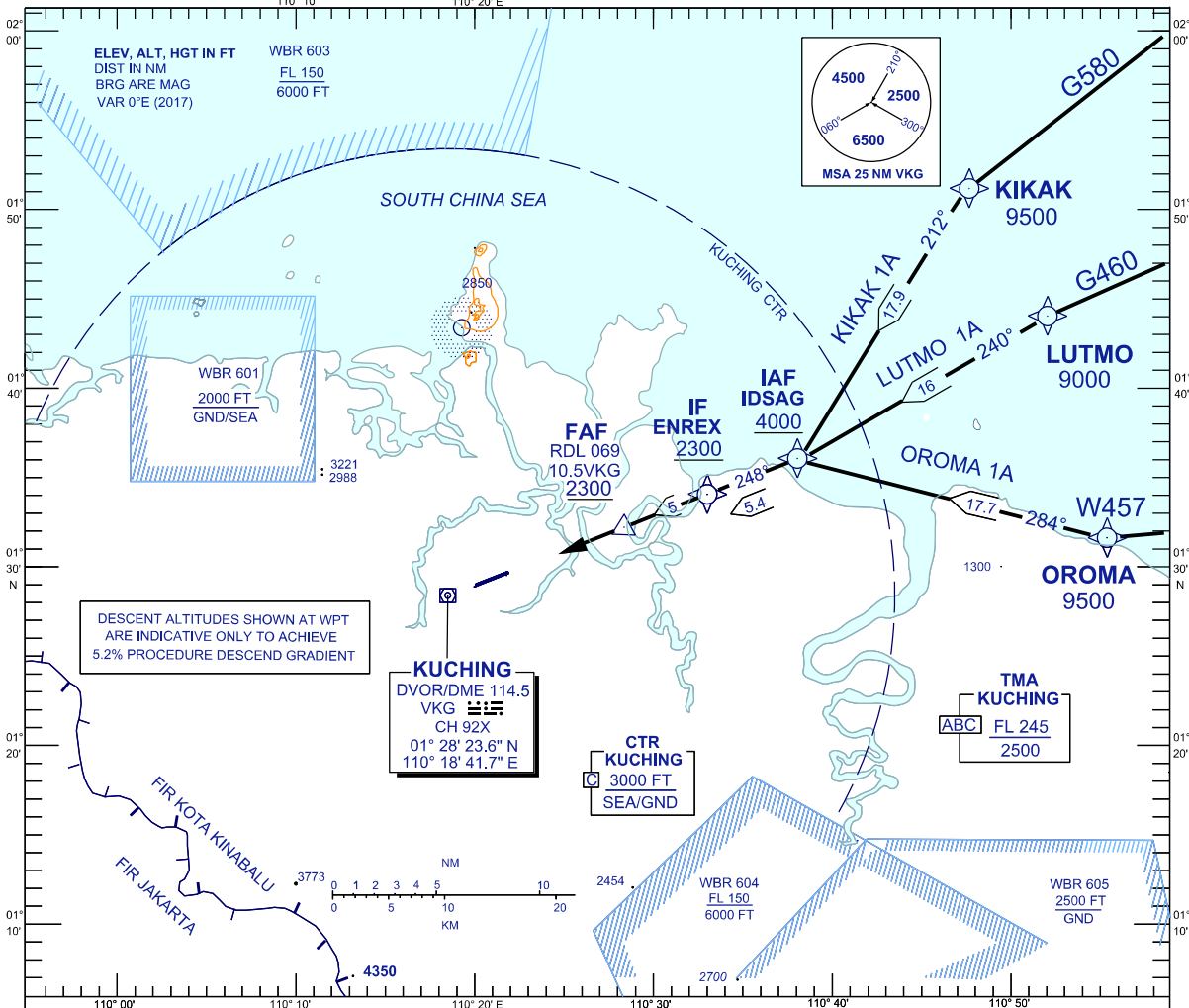
KUCHING (WBG) RWY 25 (RNAV)

TRANSITION ALTITUDE
11,000 FT

TWR	118.1 (P)	SMC	121.9
	121.7 (S)	ATIS	128.4
APP	120.2 (P)	FIS	134.75
	123.85 (S)		
ACC	134.5 (P)		
	125.35 (S)		

BANK ANGLE : 25° OR 3°/SEC

IDSAG ARRIVAL



DESCENT ALTITUDES SHOWN AT WPT
ARE INDICATIVE ONLY TO ACHIEVE
5.2% PROCEDURE DESCEND GRADIENT

KUCHING
DVOR/DME 114.5
VKG
CH 92X
01° 28' 23.6" N
110° 18' 41.7" E

CTR KUCHING
3000 FT
SEA/GND

TMA KUCHING
ABC FL 245
2500

TRANSITIONS

- KIKAK ONE ALPHA :** FROM KIKAK TRACK TO IDSAG, THEN TRACK TO ENREX
- LUTMO ONE ALPHA :** FROM LUTMO TRACK TO IDSAG, THEN TRACK TO ENREX
- OROMA ONE ALPHA :** FROM OROMA TRACK TO IDSAG, THEN TRACK TO ENREX

IDSAG ARRIVAL :

- FROM ENREX INTERCEPT LLZ z RWY 25 OR INTERCEPT RDL 070 VKG

VERTICAL RESTRICTIONS :

ADHERE TO VERTICAL RESTRICTIONS eg. 4000 = NOT BELOW 4000 FT ON DESCENT UNLESS SPECIFICALLY CANCELLED BY ATC.

COMMUNICATIONS FAILURE :

- * SQUAWK 7600
- * IF UNDER PILOT NAVIGATION, CONTINUE ON STAR AND LAND
- * IF UNDER RADAR VECTORED, MAINTAIN VECTOR FOR 1 MINUTE, IF BELOW MSA, CLIMB TO MSA, THEN TRACK TO INTERCEPT CLEARED OR PREVIOUSLY ASSIGNED STAR AND LAND